

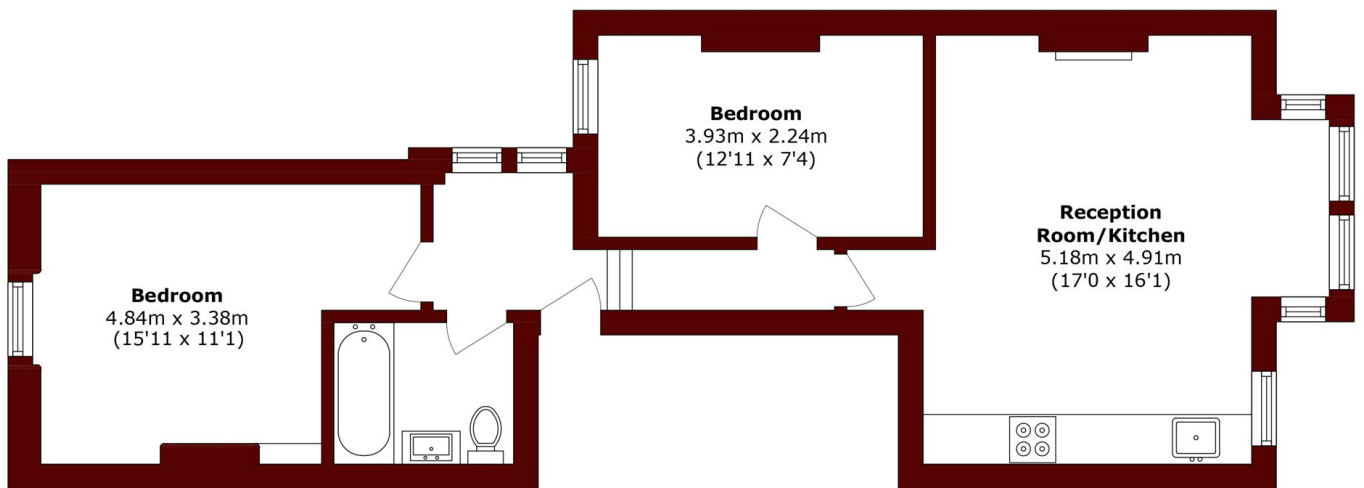


Killyon Road, SW8

£580,000



- Two double bedrooms
- Share of freehold
- Quiet residential street
- Modernised throughout
- First floor apartment
- Victorian conversion



Total area (approx.): 59.6 sq. m (641.5 sq. ft)

Marsh & Parsons Clapham

28 Old Town, London, SW4

OLB

020 7501 3666