



Kimberley Road, SW9

£700,000

 2  2  0  D

- Two double bedrooms
- Two en-suite bathrooms
- Share of freehold
- Victorian upper maisonette
- Beautifully finished throughout
- Excellent transport links



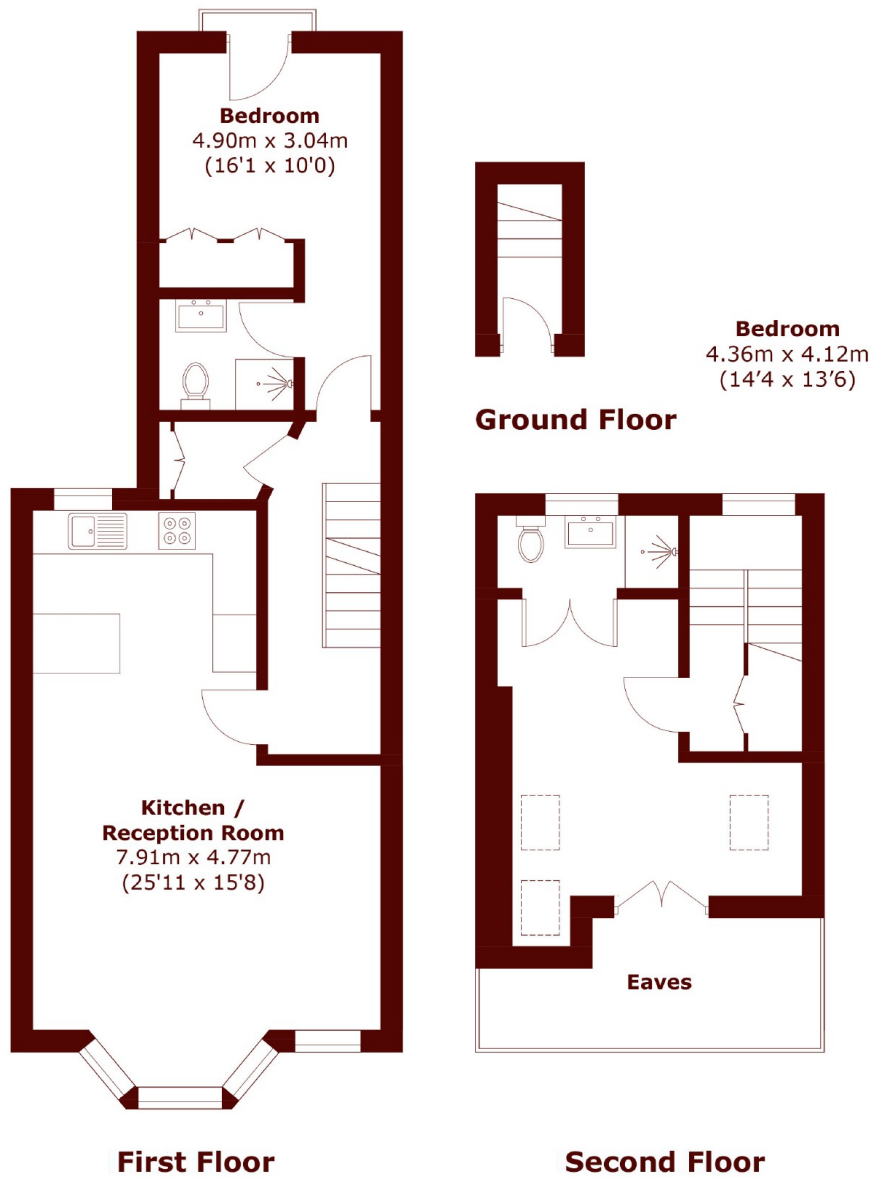


ABOUT THE PROPERTY

A beautifully presented Victorian upper maisonette offering over 850 sq ft of stylish living space. This spacious home features two generous double bedrooms and two modern bathrooms, and further benefits from a share of the freehold.

Kimbereley Road is a popular residential street just a short walk from the vibrant amenities of Clapham High Street and Clapham Old Town. Excellent transport links are within easy reach, including the Northern Line and Victoria Line at Clapham North, Stockwell, and Brixton stations, offering quick access to the City and beyond.





Total area (approx.): 79.2 sq. m (853.5 sq. ft)
(Excluding Eaves)

Marsh & Parsons Clapham

28 Old Town, London, SW4

0LB

020 7501 3666