



Northbourne Road, SW4

£3,500 per week (pcm)



- Two Bedrooms
- Two bathrooms

- Private Garden
- Double Height Ceilings

- Private patio garden
- Near Abbeville Village



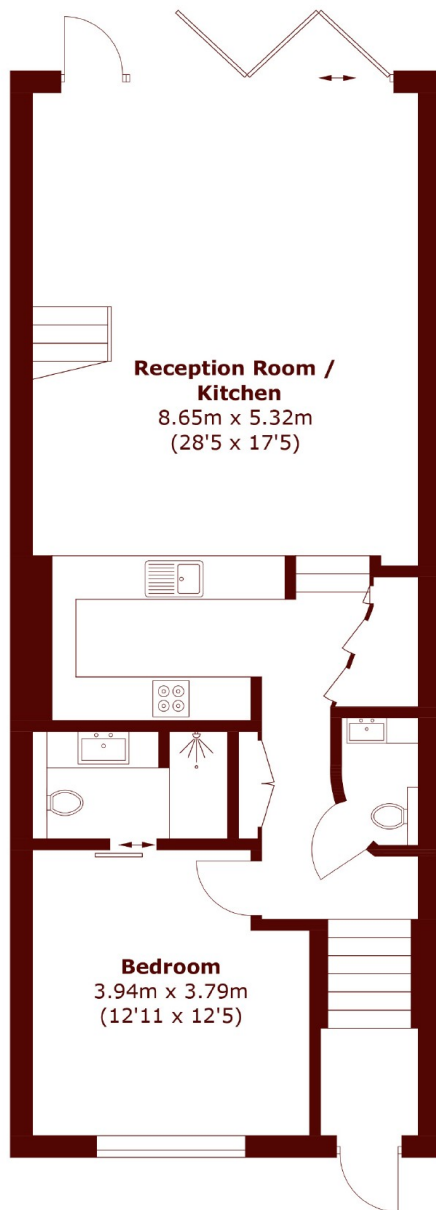


ABOUT THE PROPERTY

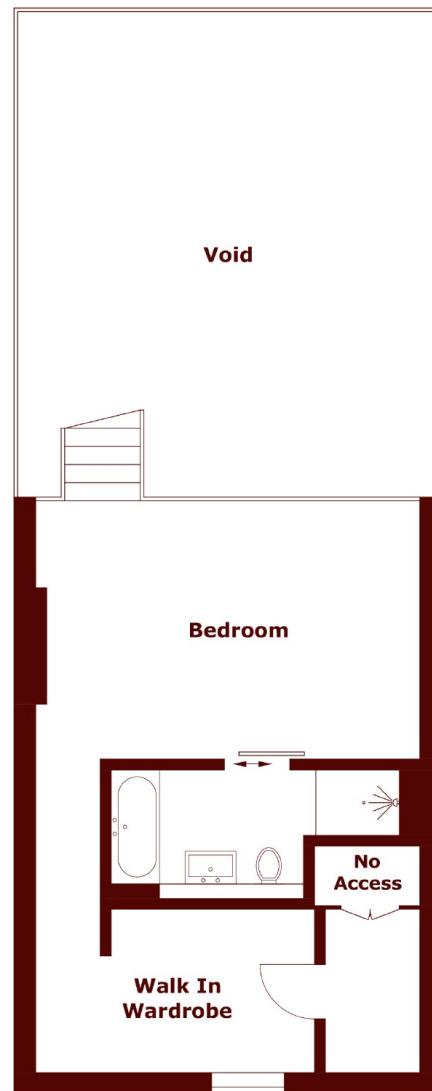
A fantastic split level, two-bedroom New York Style loft apartment including two bathrooms, a mezzanine master bedroom, open plan kitchen/living area and a private patio garden.

Northbourne Road is a quiet tree-lined residential street conveniently located for the amenities of Clapham High Street and Abbeville Village. Local transport links include Clapham Common and Clapham North Underground Stations (Northern Line).





Ground Floor



Mezzanine

Total area (approx.): 120.1 sq. m (1,292.7 sq. ft)
(Including Mezzanine & Excluding Void)

Marsh & Parsons Clapham

28 Old Town, London, SW4

OLB

020 7501 3666