



THE STORY OF

# Oddfellows Cottage

*South Creake, Norfolk*

SOWERBYS





THE STORY OF

# Oddfellows Cottage

112 Burnham Road, South Creake, Norfolk  
NR21 9JG

---

Detached 1930s Cottage

Cosy Reception Room

Elegant Garden Room

Off-Street Parking

Countryside Views

Delightful Tiered Garden

Three Bedrooms

En-Suite plus Family Bathroom

Solar Power Source

---

**SOWERBYS BURNHAM MARKET OFFICE**

01328 730340

[burnham@sowerbys.com](mailto:burnham@sowerbys.com)







Set well back in a substantial plot, and taking its name from The Order of The Oddfellows Hall next door, this is a delightful three bedroom detached cottage.

With its spacious proportions and good ceiling height, Oddfellows Cottage feels far more like a house than its name suggests. Downstairs there is an abundance of free-flowing living space; the sitting room to the front, with its exposed floorboards and log-burner, creates a sense of cosiness - where better to curl up after a blustery winter's walk than in here in front of the fire. Beyond this, the stylish, yet traditional, kitchen/ breakfast room is perfectly in keeping with the home's character. To the side is the utility room, and beyond this the ground floor bathroom with a roll-top bath provides the perfect place to fully enjoy a soak that will soothe away all aches!

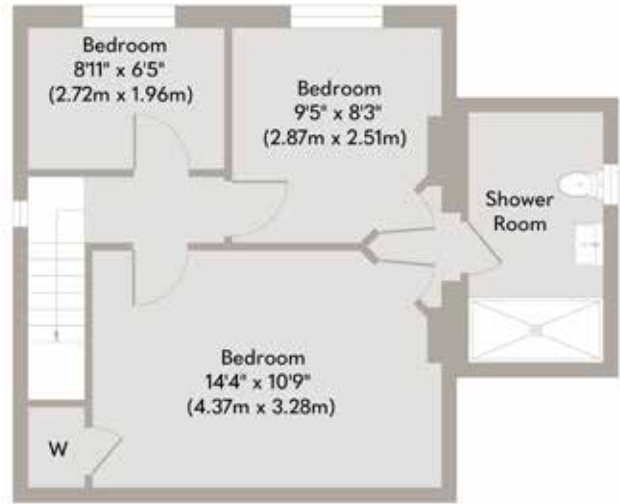
The light-filled orangery, at the rear of the cottage, with its arched wooden frames and subtle stained glass has an almost Edwardian grandeur and is a multi-functional room. Over the years it has played host for large family occasions, provided space for dinner parties and has been a place for reading the Sunday papers and nurturing plants through the winter months.

Upstairs there are three bedrooms, two good-sized doubles that share a large shower room, created by the current owners, whilst the third bedroom is a large single room.

The garden is gravelled immediately off the rear of the cottage with steps leading up to the lawned second tier, where a summerhouse is positioned to make the most of the western evening light. Although the garden is of a good size, it feels even larger as it backs onto and overlooks open countryside.

Oddfellows Cottage has been a main home for several years and, whilst its current owners will be sad to say goodbye, they hope its next custodians love it as much as they have.





First Floor  
Approximate Floor Area  
474 sq. ft  
(44.01 sq. m)



Ground Floor  
Approximate Floor Area  
792 sq. ft  
(73.60 sq. m)

Whilst every attempt has been made to ensure the accuracy of the floor plan contained here, measurements of doors, windows, rooms and any other items are approximate and no responsibility is taken for any error, omission, or mis-statement. This plan is for illustrative purposes only and should be used as such by any prospective purchaser or tenant. The services, systems and appliances shown have not been tested and no guarantee as to their operability or efficiency can be given.

Copyright V360 Ltd 2025 | [www.houseviz.com](http://www.houseviz.com)





“The garden is just wonderful, there is no better place to sit and drink coffee, while listening to beautiful birdsong...”



# South Creake

A RURAL RIVER THROUGH THE HEART  
OF THE VILLAGE

A very popular rural village, South Creake has a pretty village green through which the River Burn runs. The village has a vibrant community and the busy village hall is home to many events. There's a children's play area, tennis courts, fishing lakes and a football team. Within the village is a popular cake stall as well as a fruit and veg stand. The village is also home to The Yorke Trust - a charity which provides musical education to children and students who may not otherwise have this benefit.

South Creake is perfectly positioned for the beautiful North Norfolk coast, with Wells-next-the-Sea just six miles away. With its sandy beach and charming candy-striped huts, it makes for a perfect day at the seaside, whilst also being filled with cultural gems, delightful eateries and everyday essentials.

The market town of Fakenham is also only six miles away and provides a good range of shops and amenities, as well as a bustling weekly market and auction.

South Creake is about five miles from the village of Burnham Market which is located close to the mouth of the River Burn, and which has long been associated with naval hero Admiral Horatio Nelson, who lived at nearby Burnham Thorpe. A refined elegance permeates every aspect of this village's life, from the traditional homewares found at Uttings, the locals 'go-to' for household essentials, to sampling tasty treats at the Tuscan Farm Shop, Humble Pie Deli or Gurneys Fish Shop – this is a place to savour the finer things. For amenities, Burnham Market Stores is well-stocked and The Post Office, Burnham Motors Garage, and the petrol station are all also very useful. Eating out is a joy with award winning Socius serving a British-inspired tapas menu, and NoTwenty9's bar, restaurant and courtyard provides a relaxed spot to wine and dine on warm summer's nights.



## Note from the Vendor



“The openness of fields around us has made it so quiet, it feels as though we’re on our own.”



## SERVICES CONNECTED

Mains electricity, water and drainage. Oil fired central heating.

## COUNCIL TAX

Band C.

## ENERGY EFFICIENCY RATING

D. Ref:- 0360-2772-1560-2695-6131

To retrieve the Energy Performance Certificate for this property please visit <https://find-energy-certificate.digital.communities.gov.uk/find-a-certificate/search-by-reference-number> and enter in the reference number above. Alternatively, the full certificate can be obtained through Sowerbys.

## TENURE

Freehold.

## LOCATION

What3words: ///dangerously.intruded.masters

These particulars and measurements whilst believed to be accurate, are set out as a general outline only for guidance and do not constitute any part of an offer or contract. Intending purchasers should not rely on them as statements of representation of fact, but must satisfy themselves by inspection or otherwise as to their accuracy. No person in this firm's employment has the authority to make or give representation or warranty in respect of the property.

# SOWERBYS

We are proudly supporting these Norfolk charities by organising and participating in events throughout 2025, along with making a donation for every home we sell.



Sowerbys Estate Agents Limited is a company registered in England and Wales, company no: 05668606.  
Registered office 54 Westgate, Hunstanton, Norfolk, PE36 5EL

