



Ladbroke Grove House, W11

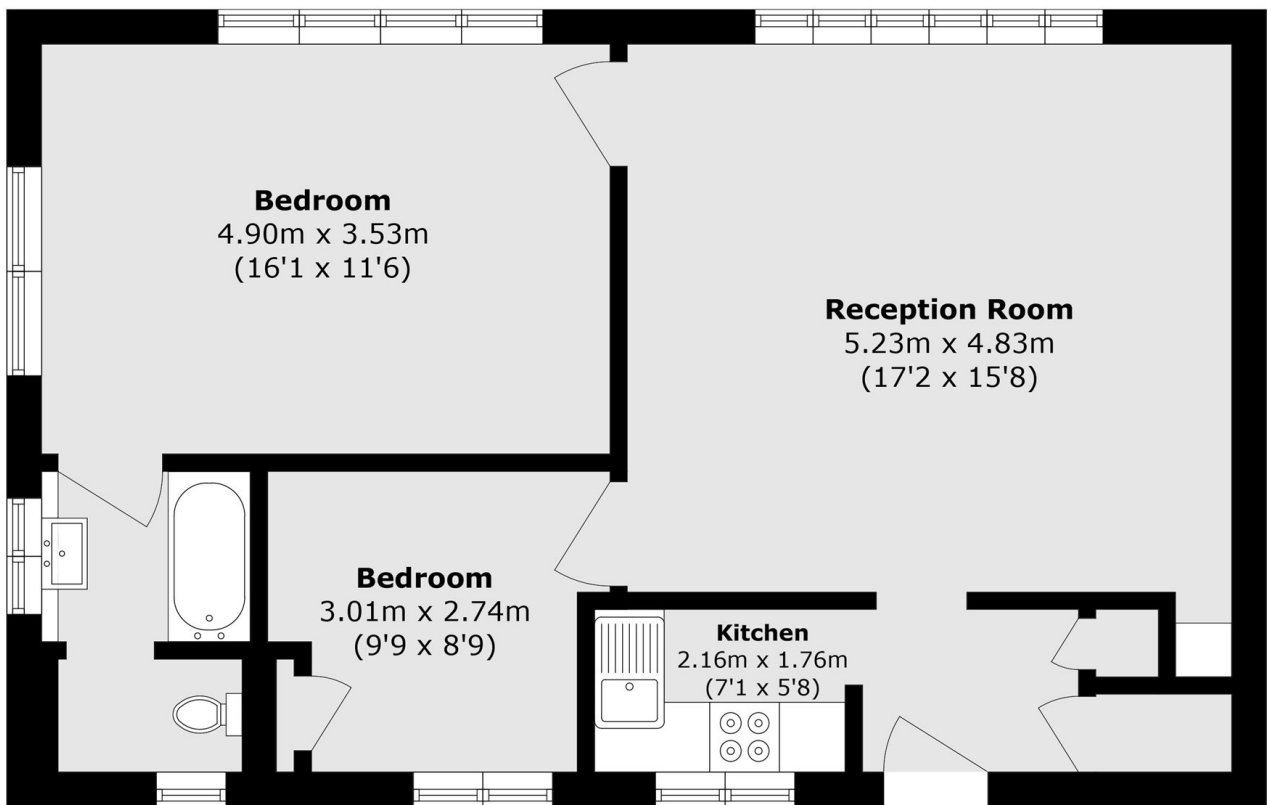
£825,000



- Two Bedrooms
- Communal Garden

- Lift Access
- Natural Light

- Second Floor
- Prime Location



Total area (approx.): 64.3 sq. m (692.1 sq. ft)

Marsh & Parsons Holland Park

57 Norland Square, London,
W11 4QJ
020 7605 6890