



## Elsham Road, W14

£600 per week

 2  1  1  C

- Two Bedroom
- First Floor
- Wood Floors
- Period Features
- Recently Redecorated
- Popular Location







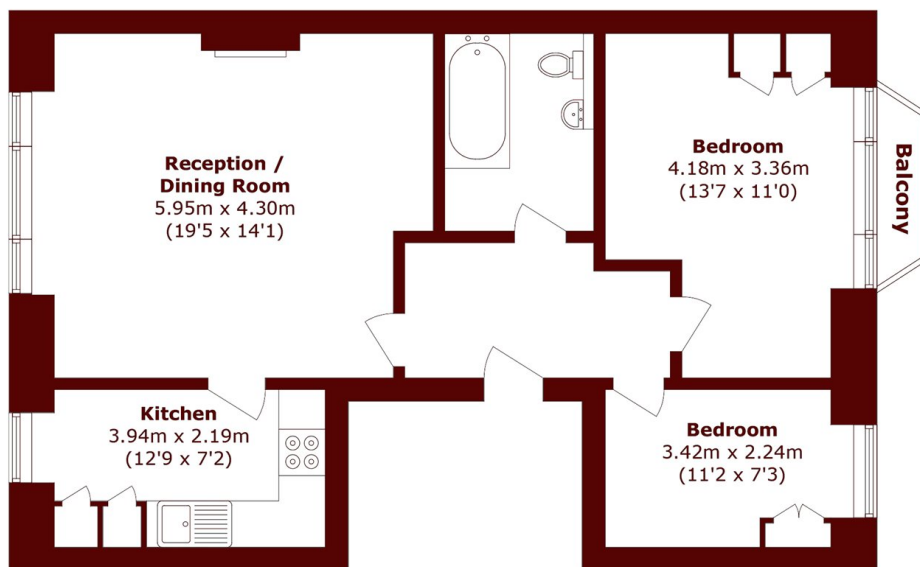


## ABOUT THE PROPERTY

The property is flooded with light and comprises a modern eat-in kitchen, a spacious reception room, two bedrooms, excellent storage space and a contemporary bathroom. Furthermore the property includes wooden flooring throughout as well as high ceilings.

Elsham Road is a short walk from the London Westfield and the shops, bars and eateries of Holland Park Avenue. Transport links include Kensington Olympia Overground Station, Shepherds Bush Central Line/Overground and Holland Park Central Line.





Total area (approx.): 62.6 sq. m (673.8 sq. ft)  
Balcony area (approx.): 1.3 sq. m (13.9 sq. ft)

## Marsh & Parsons Holland Park

57 Norland Square, London,  
W11 4QJ  
020 7605 6890