



St. James's Gardens, W11

£1,730 per week

 3  3  2  C

- Stunning Garden Square
- Stylishly Refurbished
- Three Double Bedrooms
- Large Private Garden
- High Ceilings
- Balcony





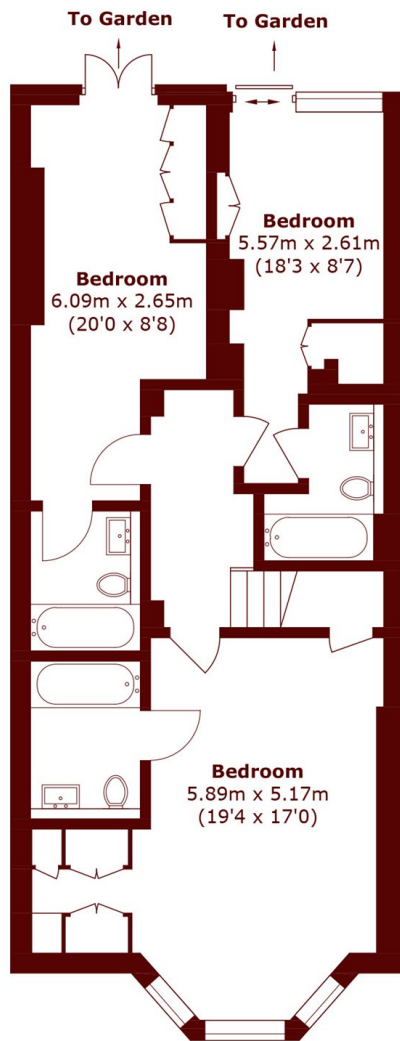
ABOUT THE PROPERTY

This outstanding apartment has been stylishly modernised throughout and benefits from wonderfully high ceilings and southerly views over the stunning private garden square which is available for the tenant's use.

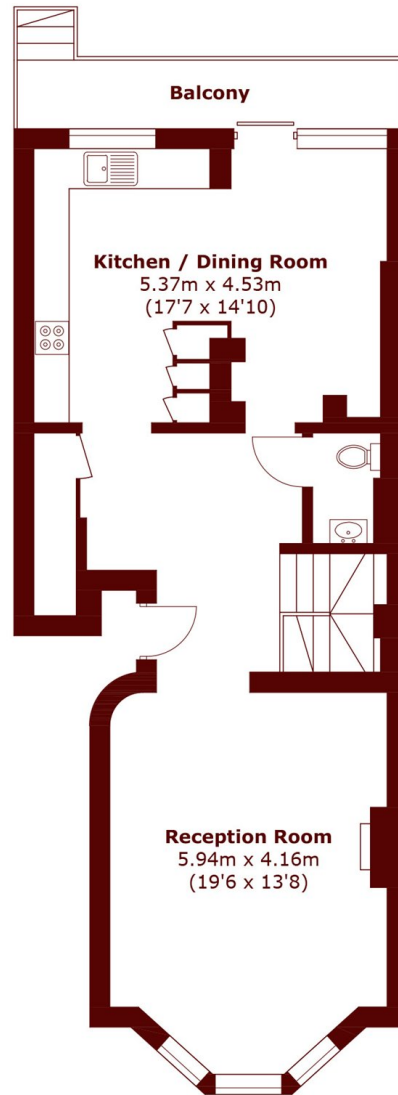
Accommodation on the raised ground floor comprises generous reception room with wood flooring, guest cloak-room, dining area and eat-in kitchen with balcony plus direct access to a large private garden. The lower ground floor is occupied by a generous master bedroom with en suite bathroom and two further large double bedrooms each with own en suite bathroom, all with excellent storage.

St James's Gardens is a sought-after garden square moments from Holland Park Avenue, Clarendon Cross and Notting Hill with their wealth of excellent shops and restaurants. Central and District line Tubes are nearby as are the A40 and A4 for access to Heathrow and into the West End.





Lower Ground Floor



Ground Floor

Total area (approx.): 131.6 sq. m (1416.5 sq. ft)
Balcony area: 6.6 sq. m (71.0 sq. ft)

Marsh & Parsons Holland Park

57 Norland Square, London,
W11 4QJ
020 7605 6890