

## Clarendon Road, W11

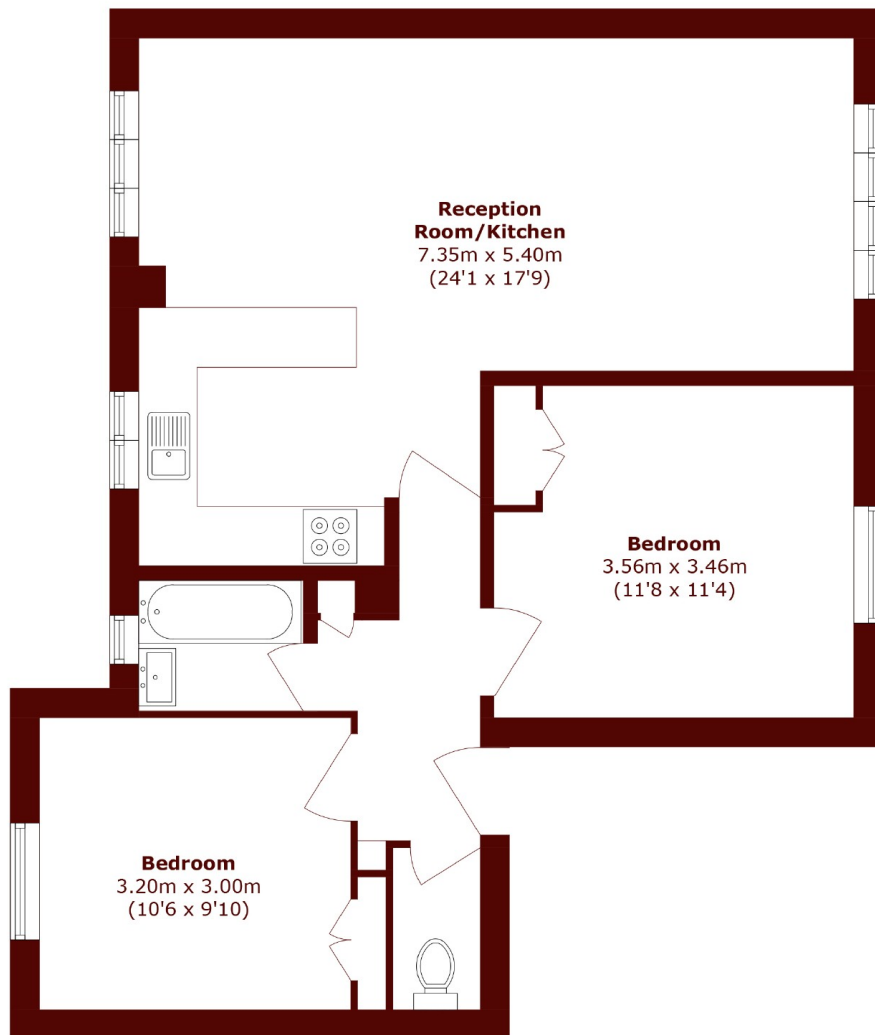
£750 per week



- Two Double Bedrooms
- Ground Floor

- Purpose Built
- Wood Floors

- Open Plan Kitchen
- Recently Refurbished



## Raised Ground Floor

Total area (approx.): 64.8 sq. m (697.5 sq. ft)

### Marsh & Parsons Holland Park

57 Norland Square, London,  
W11 4QJ  
020 7605 6890