



Holland Villas Road, W14

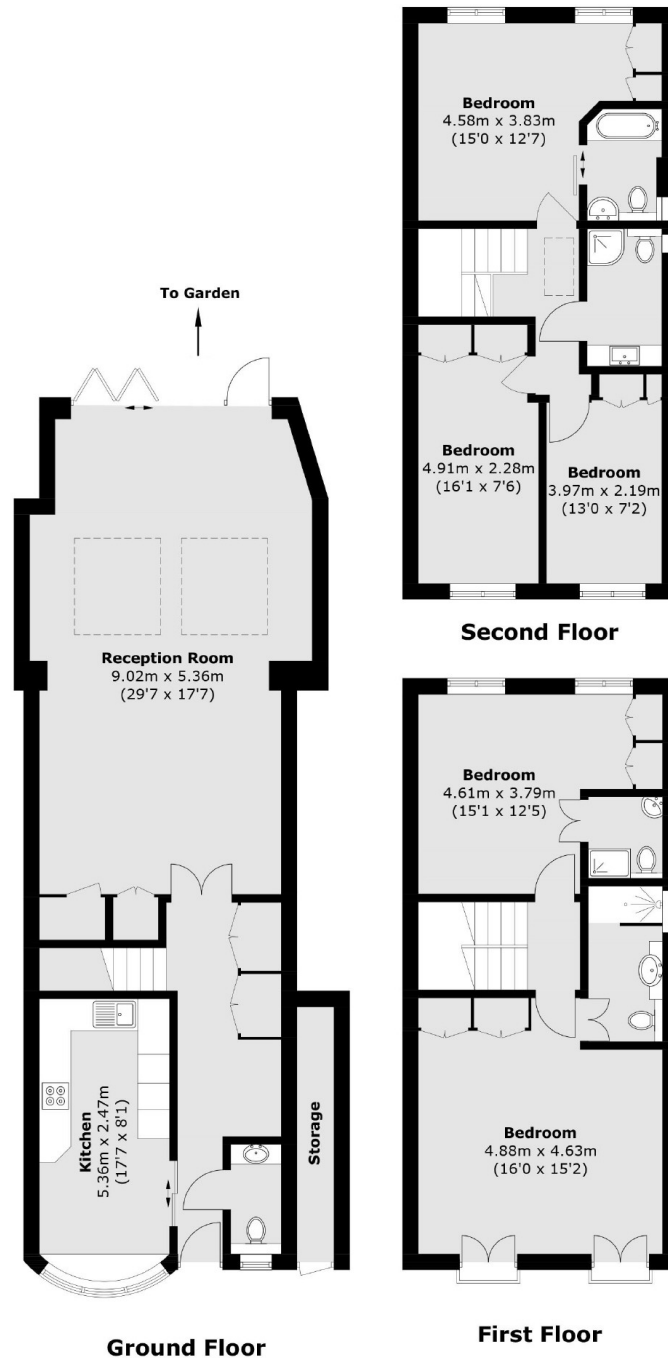
£2,300,000

5 4 1 C

- Five Bedrooms
- Four Bathrooms

- Double Reception Room
- Off Street Parking

- West Facing Garden
- Freehold House



Total area (approx.): 174.7 sq. m (1,880.4 sq. ft)
Storage: 3.4 sq. m (36.6 sq. ft)

Marsh & Parsons Holland Park

57 Norland Square, London,
W11 4QJ
020 7605 6890