



Norland Square, W11

£2,100 per week



- Three Double Bedrooms
- Refurbished Home
- Wooden Flooring
- Architectural Features
- Private Entrance
- Garden Square Access





ABOUT THE PROPERTY

This stunning architecturally remodelled maisonette has been redesigned to the highest specification and with the utmost attention to detail. The layout has been carefully considered to maximise living space and the entire raised ground floor flows from a beautiful dining area through to a stunning modern kitchen which then leads through to a large living room. Technology is integrated into the apartment with control panels that moderate audio, security, temperatures in each room. The property boasts its own private entrance and further to the living/entertaining space, there are three double bedrooms all with excellent storage, three beautiful bathrooms, a laundry room, and a small guest room/office. Also includes access to the private communal gardens and tennis court of Norland Square.

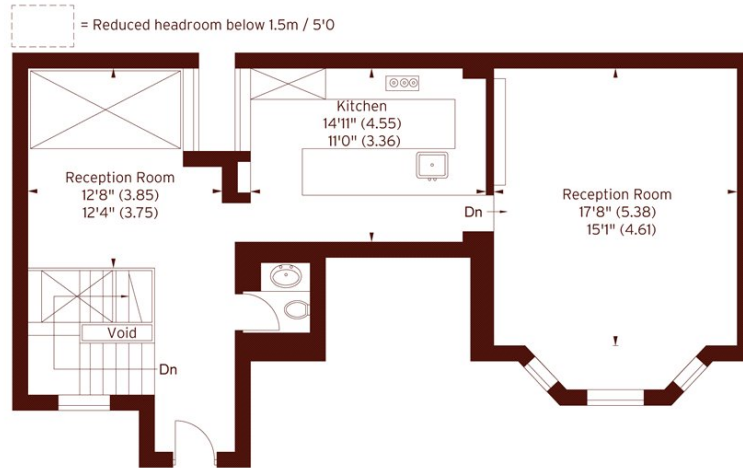


Norland Square, W11 is a prestigious garden square in the heart of Holland Park, known for its elegant period homes and exclusive private gardens. Moments from Clarendon Cross, Holland Park and Westfield, it is also close to high-end boutiques, The Belvedere restaurant, Daunt Books, and excellent transport links via Holland Park Station.

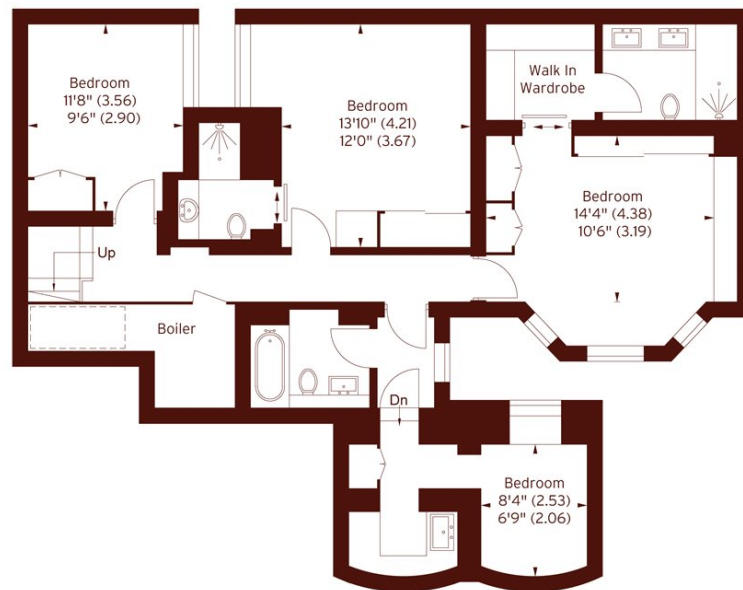


Norland Square, W11

APPROX. GROSS INTERNAL FLOOR AREA 1839 SQFT / 170.9 SQM
(INCLUDING VOID)



GROUND FLOOR



LOWER GROUND FLOOR

The floor plan is not to scale and measurements and areas shown are approximate and therefore should be used for illustrative purposes only. The plan has been prepared in accordance with the RICS code of measuring Practice and whilst we have confidence in the information produced, it must not be relied on. If there is any aspect of particular importance, you should carry out or commission your own inspection of the property.

Marsh & Parsons Holland Park

57 Norland Square, London,
W11 4QJ
020 7605 6890