



Oakwood Lane, W14

£3,230 per week (pcm)



- Four Bedrooms
- Four Bathrooms

- Detached House
- Recently Refurbished

- Garden
- Three Parking Spaces

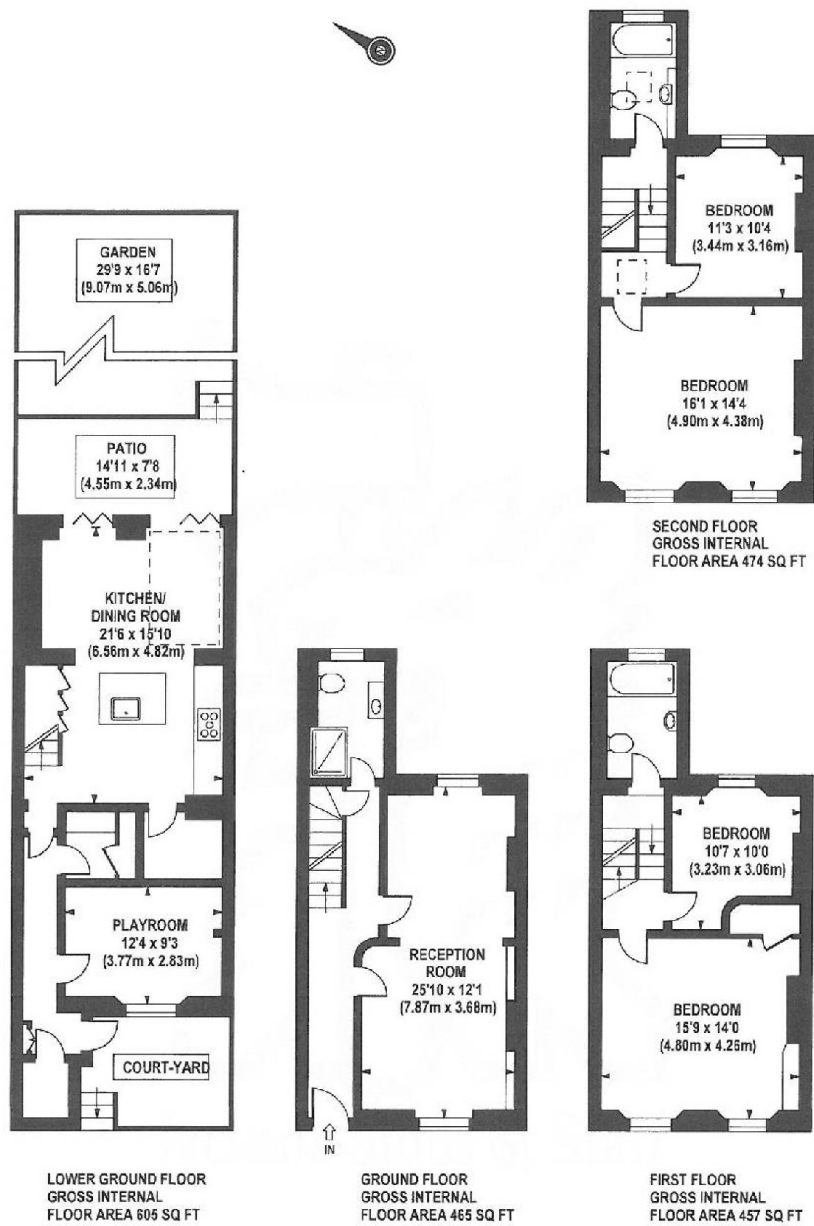


ABOUT THE PROPERTY

A well-presented detached house close to both Holland Park and High Street Kensington. The house comprises of four bedrooms, four bathrooms, separate kitchen and large reception room which opens onto the private patio garden as well as an additional reception room. The house also benefits from two off-street parking spaces directly outside the property.

Oakwood Lane is highly sought-after quiet road, located moments from the open spaces of Holland Park, the excellent shopping of Kensington High Street and close to the great transport links at Holland Park Underground station (Central line). Council Tax Band - H





COMPLIANT WITH RICS CODE OF MEASURING PRACTICE Floorplan is for illustrative purposes only and is not to scale. Every attempt has been made to ensure the accuracy of the floorplan shown, however all measurements, fixtures, fittings and data shown are an approximate interpretation for illustrative purposes only. Liability for errors, omissions or mis-statement through negligence or otherwise is hereby excluded.

CP | CREATIVE
Property Marketing

Marsh & Parsons Marsh & Parsons

57 Norland Square, London,
W11 4QJ
020 7605 6890

We aim to make our particulars both accurate and reliable. However, they are not guaranteed; nor do they form part of an offer or contract. If you require clarification on any points then please contact us, especially if you're traveling some distance to view. Please note that appliances and heating systems have not been tested and therefore no warranties can be given as to their good working order.