



Imperial Court, W8

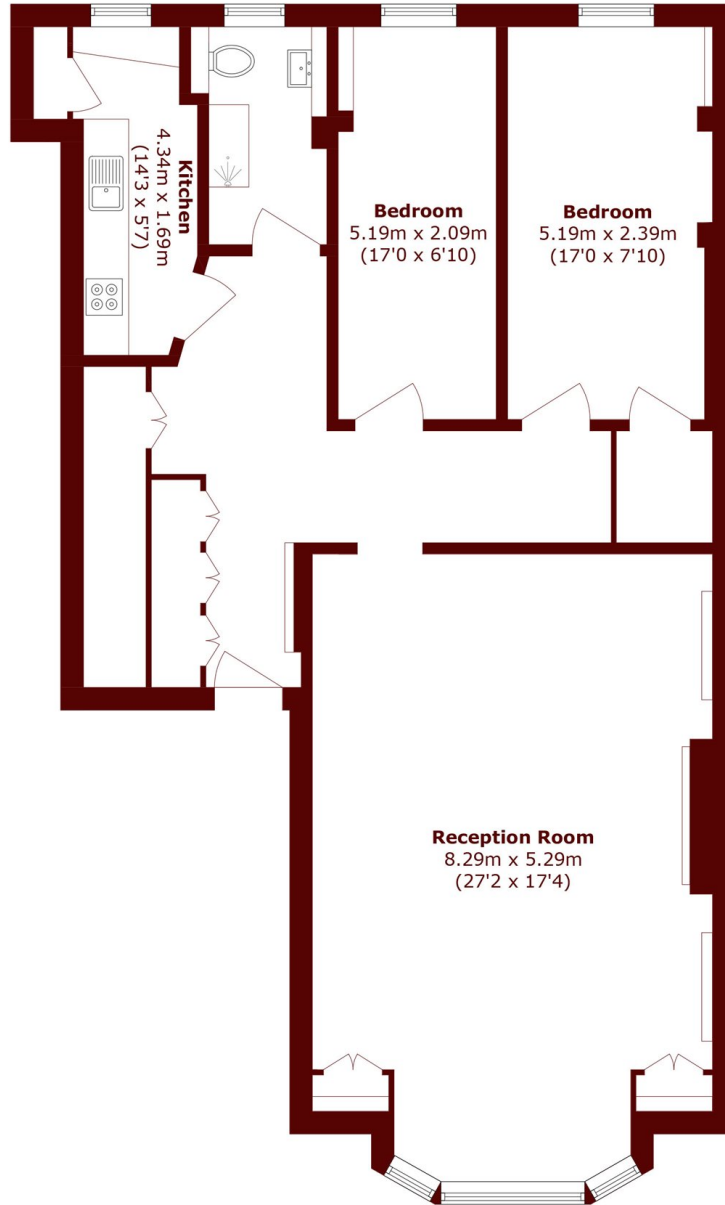
£1,250,000



- Two Bedrooms
- Separate Kitchen

- Bright
- Raised Ground Floor

- Charming Kensington Location
- Leasehold



Ground Floor

Total area (approx.): 105.7 sq. m (1137.7 sq. ft)

Marsh & Parsons Kensington

9 Kensington Church Street,
London, W8 4LF
020 7368 4450