

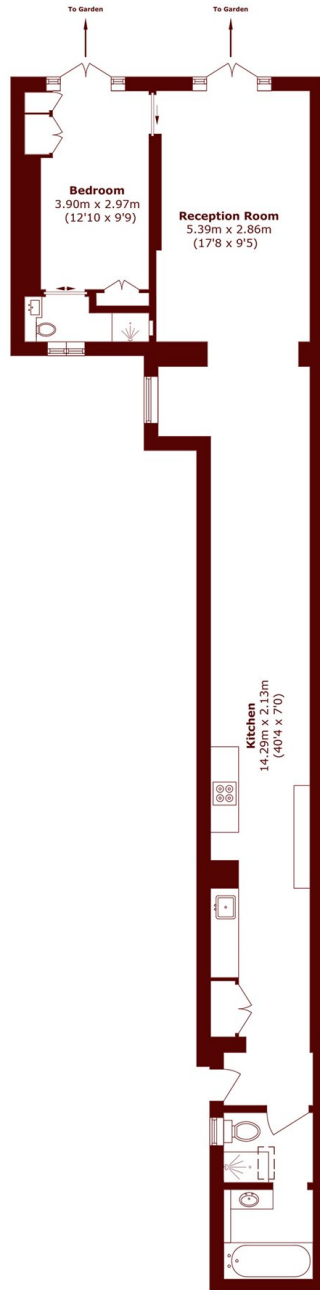


Lexham Gardens, W8

£900,000



- One Bedroom
- Two Bathroom
- Private Garden
- Bright
- Approx. 829 sqft
- Leasehold



Lower Ground Floor

Total area (approx.): 77.0 sq. m (828.8 sq. ft)

Marsh & Parsons Kensington

9 Kensington Church Street,
London, W8 4LF
020 7368 4450

We aim to make our particulars both accurate and reliable. However, they are not guaranteed; nor do they form part of an offer or contract. If you require clarification on any points then please contact us, especially if you're traveling some distance to view. Please note that appliances and heating systems have not been tested and therefore no warranties can be given as to their good working order.