

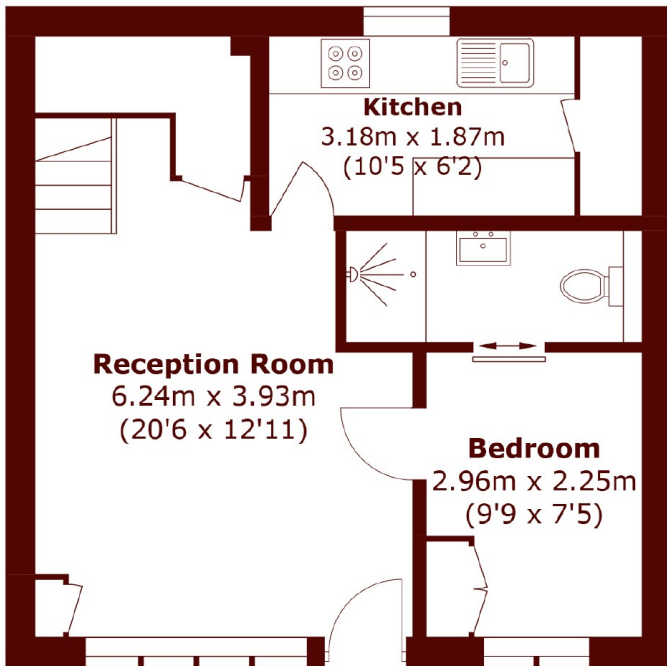


Radley Mews, W8

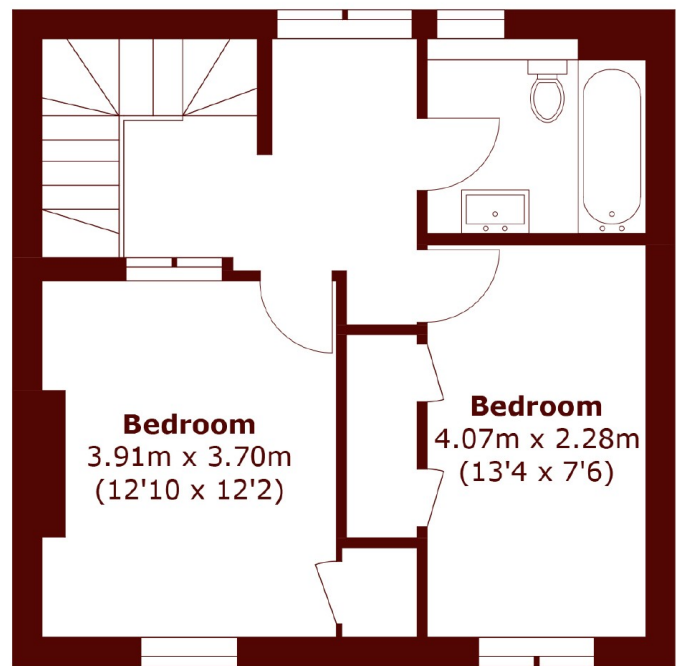
£1,650,000



- Development Opportunity
- Three Bedrooms
- Two Bathrooms
- Unmodernised
- Quiet Cobbled Mews
- Freehold



Ground Floor



First Floor

Total area (approx.): 78.4 sq. m (843.9 sq. ft)

Marsh & Parsons Kensington

9 Kensington Church Street,
London, W8 4LF
020 7368 4450