



Kensington Court, W8

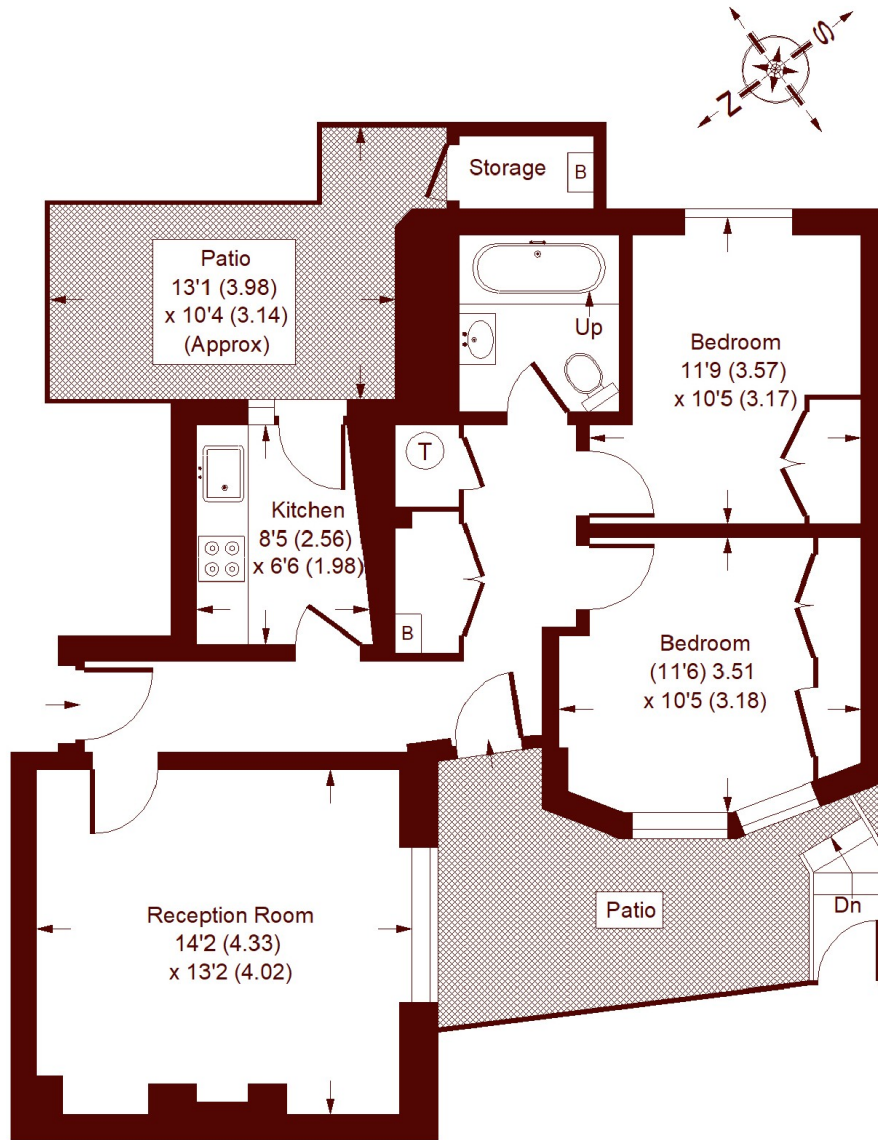
£745,000



- Two Bedrooms
- Lower Ground Floor
- Excellent Kensington Location
- Separate Kitchen
- Private Patio
- Share of Freehold

Kensington Court, W8

APPROX. GROSS INTERNAL FLOOR AREA
651 SQFT / 60.5 SQM
(EXCLUDING STORAGE & PATIO)



LOWER GROUND FLOOR

Whilst every attempt has been made to ensure the accuracy of the floor plan, measurements are approximate and not to scale. No guarantee is given on the total square footage of the property quoted on the plan. Figures given are for guidance. Plans for illustration purposes only, not to be used for valuations.

Marsh & Parsons Kensington

9 Kensington Church Street,
London, W8 4LF
020 7368 4450