



## Rutland House, W8

£4,500,000



- Three Bedrooms
- Three Bathrooms

- Lateral Apartment
- Lower Ground Floor

- Portered Block
- Long Lease









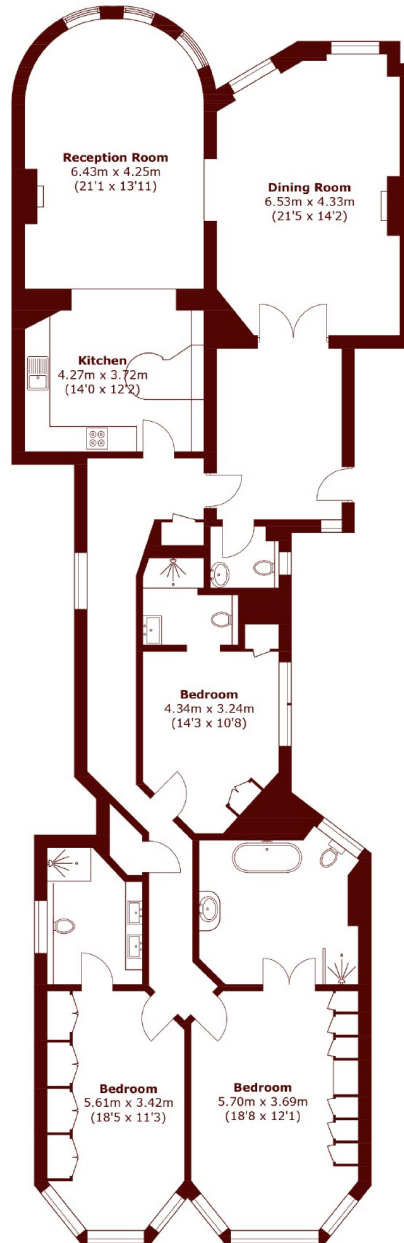
## ABOUT THE PROPERTY

A raised ground floor lateral apartment with three en-suite bedrooms and open-plan living, located near Kensington High Street and Holland Park.

A raised ground floor apartment with 2,060 square feet of space, located in a red brick portered building. The property offers a spacious open-plan reception, dining area, and eat-in kitchen, with three double bedrooms and en-suite bathrooms positioned at the rear.

Rutland House is situated on Marloes Road which is located just to the south of Kensington High Street . The numerous shopping and transport facilities of Kensington High Street are within walking distance as are the open spaces of Holland Park.





## Ground Floor

Total area (approx.): 191.4 sq. m (2060.2 sq. ft)

### Marsh & Parsons Marsh & Parsons

9 Kensington Church Street,  
London, W8 4LF  
020 7368 4450

We aim to make our particulars both accurate and reliable. However, they are not guaranteed; nor do they form part of an offer or contract. If you require clarification on any points then please contact us, especially if you're traveling some distance to view. Please note that appliances and heating systems have not been tested and therefore no warranties can be given as to their good working order.