



Carlton Mansions, Holland Park  
London  
£1,900,000

KNIGHTSBRIDGE  
INTERNATIONAL REAL ESTATE





Situated in a charming period building in Holland Park Gardens this beautiful lateral property offers three double bedrooms with great storage, three en suite bathrooms, a large and modern fully fitted kitchen with dining area, a spacious and separate living room with direct access to a large and gorgeous private garden.

The property further benefits with underfloor heating, air conditioning and audio system throughout and a lift is also available in the building.

Carlton Mansions is located in the heart of Holland Park just a few moments from the green areas of Holland Park, easy access to local bars, shops, restaurants and prestigious schools just behind the Holland park Lawn Tennis Club and with excellent transport links such as Holland Park Station.

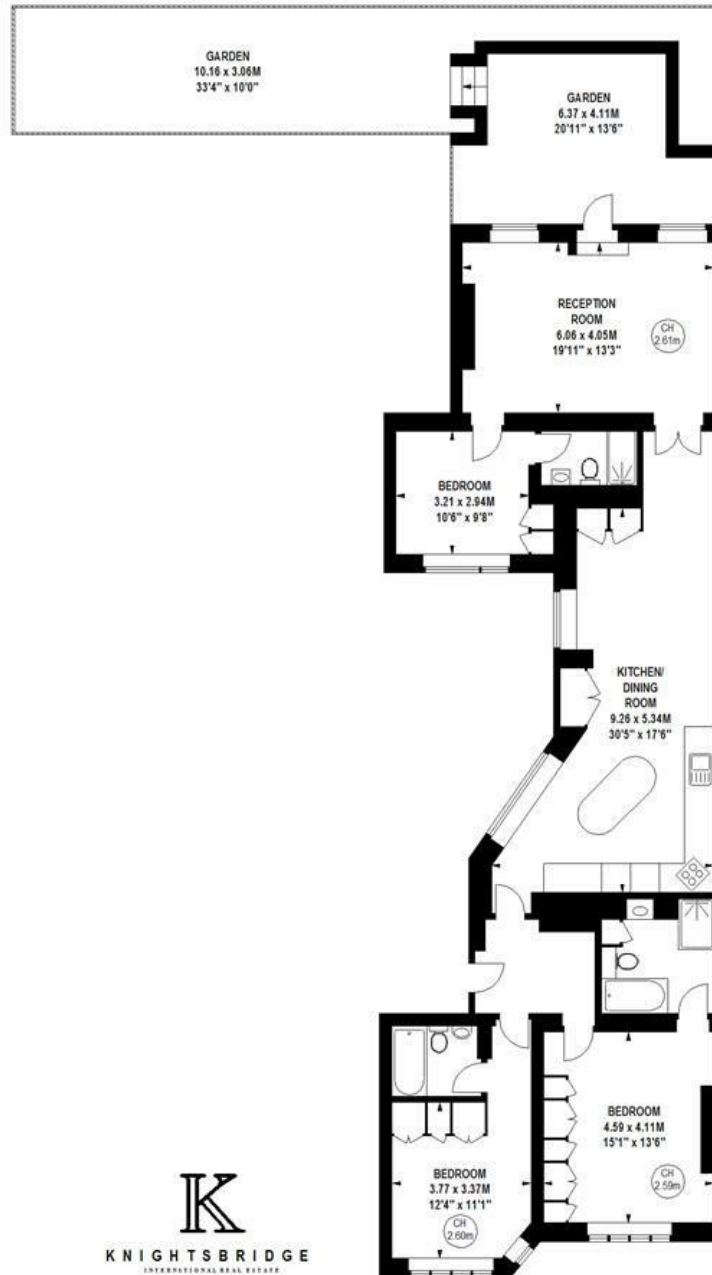


# Carlton Mansions, W14

Approximate gross internal area

143.53 sq m / 1545 sq ft

Key:  
CH - Ceiling Height

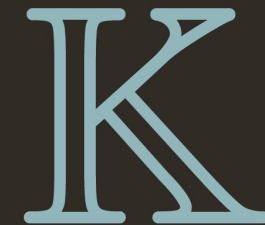


## Lower Ground Floor

Although every attempt has been made to ensure accuracy, all measurements are approximate.  
This floorplan is for illustrative purposes only and not to scale.  
Measured in accordance with RICS Standards © Outline.



- Three double bedrooms
  - Three Bathrooms
  - Open Plan Kitchen
  - Large Reception Room
    - High Ceilings
- Underfloor Heating Throughout
  - Lift
- Large Private Garden
  - Air conditioning
- Just Moments away from Holland Park Station



**KNIGHTSBRIDGE**

INTERNATIONAL REAL ESTATE



139, Munster Road, London, SW6 6DD

[info@kbire.co.uk](mailto:info@kbire.co.uk) | 02080580052

