



K

KNIGHTSBRIDGE
INTERNATIONAL REAL ESTATE

K

Onslow Gardens, South Kensington
London

£1,730 Per week

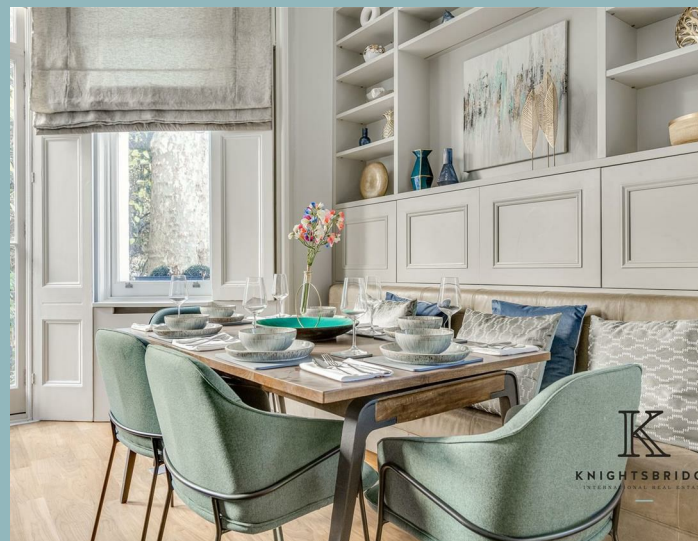
KNIGHTSBRIDGE
INTERNATIONAL REAL ESTATE



Nestled in the prestigious center of South Kensington, within the enchanting Onslow Gardens, discover this newly refurbished split-level 3-bedroom apartment. Set within a charming period building, this apartment seamlessly blends classic elegance with modern comfort. The apartment offers ample storage, open plan kitchen/reception room with high ceiling, natural sun light and wooden flooring thorough as well as direct access to the communal gardens and private patio. A master ensuite bedroom has built in wardrobes for extra storage space, there is two further bedrooms and a family bathroom as well as a guest WC.

This apartment is available now offered furnished with a caretaker.

Onslow Gardens is a perfect location for families as well as individuals. Its set moments away from South Kensington station with a variety of shops, restaurants and museums.



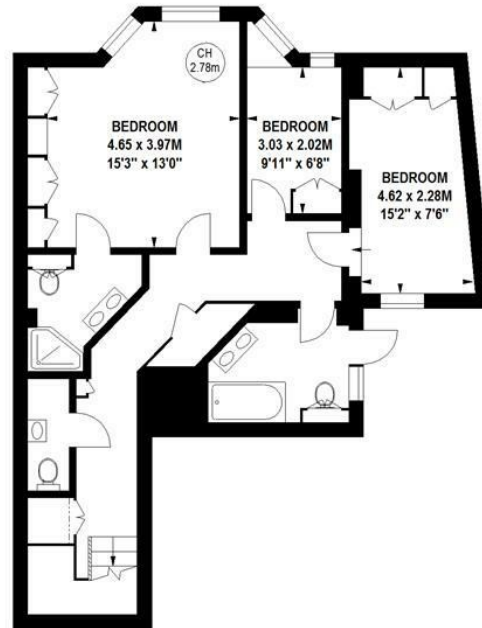
Onslow Gardens, SW7

Approximate gross internal area

112.32 sq m / 1209 sq ft



Key :
CH - Ceiling Height



747 sq ft
Lower Ground Floor



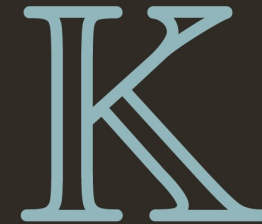
462 sq ft
Ground Floor

This floor plan is a representation for guidance purposes only, not for valuation.
Any figure is approximate and must not be relied on as a statement of fact.
Copyright of Wyatt Dixon Homes





- 3 Bedrooms
- Communal Garden
- High Ceilings
- Split level
 - Patio
- Caretaker



KNIGHTSBRIDGE

INTERNATIONAL REAL ESTATE

139, Munster Road, London, SW6 6DD

info@kbire.co.uk | 02080580052

