



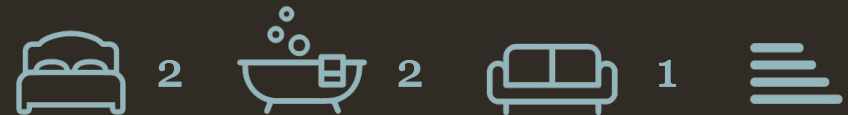
K

Kensington Mansions, London

London

Guide Price £1,500,000

KNIGHTSBRIDGE
INTERNATIONAL REAL ESTATE





Immaculately presented two double bedroom apartment located in the highly sought after Kensington Mansions, arguably one of the most perfect examples of a red brick mansions block, which offers in excess of 1,100sq ft of internal living space. This wonderful apartment provides an abundance of space whilst being conveniently located within close proximity of Earl's Court tube station and a plethora of amenities.

Situated on the second floor of this charming development, the apartment comprises welcoming entrance hallway with storage space, contemporary kitchen which is open plan to the dining area and creates the perfect entertaining space, spacious living room which is flooded with natural light from the bay window. The property offers two double bedrooms, of which the master boasts en-suite shower room and built in wardrobes, and a family bathroom.

Additionally, residents enjoy the convenience of a lift, porter service and access to the stunning, mature private communal gardens.

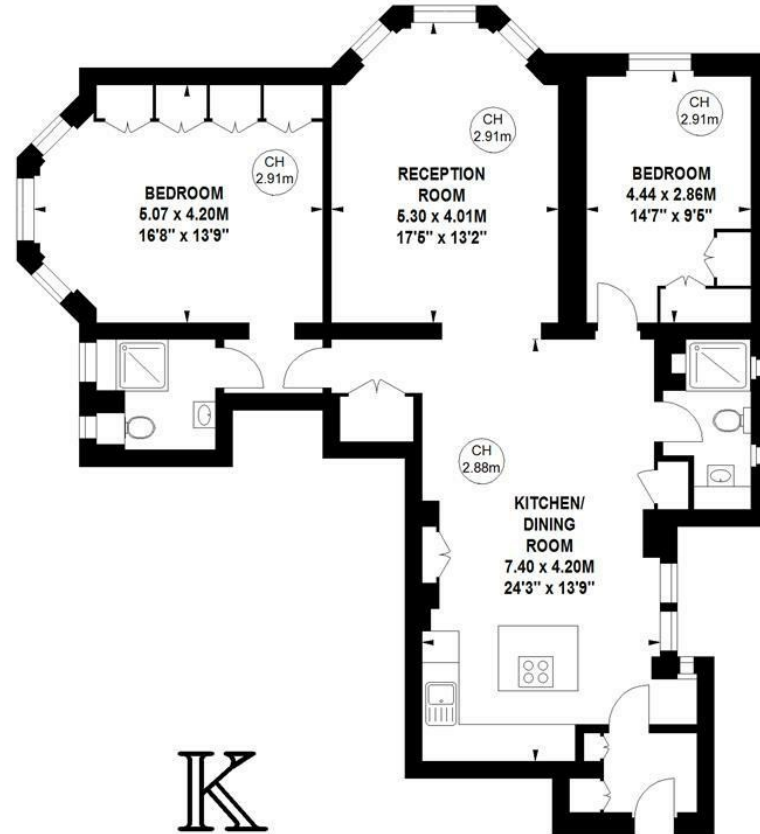
The property is located approximately 0.3 miles from Earl's Court Tube Station offering the District & Circle Lines and the Piccadilly Line. Kensington Mansions is also within walking distance of an abundance of fantastic local shops, cafes, bars and restaurants.



Kensington Mansions, SW5

Approximate gross internal area
103.87 sq m / 1118 sq ft

Key :
CH - Ceiling Height



KNIGHTSBRIDGE
INTERNATIONAL REAL ESTATE

Second Floor

Although every attempt has been made to ensure accuracy, all measurements are approximate.
This floorplan is for illustrative purposes only and not to scale.
Measured in accordance with RICS Standards. © Outline.



- Immaculate two double bedroom apartment in sought-after Kensington Mansions
- Spacious living area with bay window flooding natural light
- Open-plan kitchen and dining area ideal for entertaining
- Primary bedroom with en-suite shower room and built-in wardrobes
 - Second floor location in charming development
 - Lift and porter service for residents' convenience
 - Access to stunning private communal gardens
- Close proximity to Earl's Court Tube Station and local amenities



KNIGHTSBRIDGE

INTERNATIONAL REAL ESTATE

139, Munster Road, London, SW6 6DD

info@kbire.co.uk | 02080580052

