





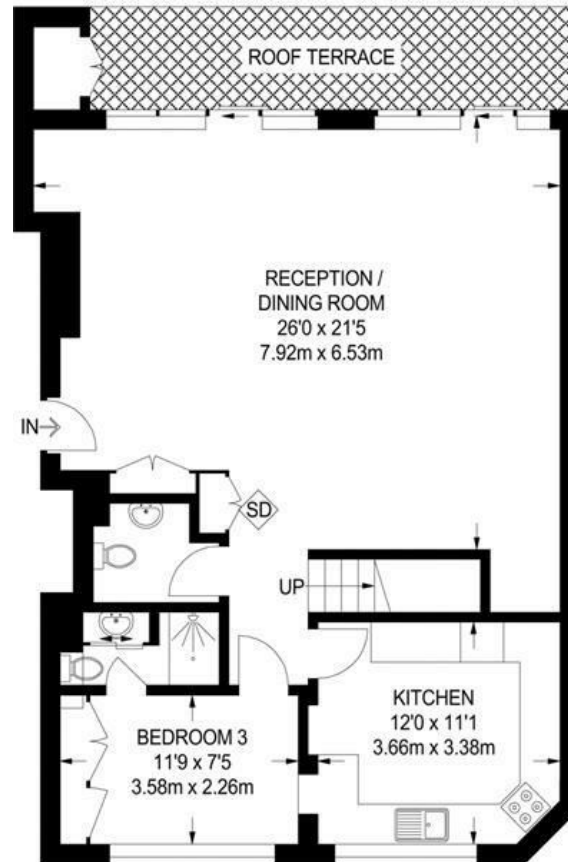
Chelsea Harbour, London

£2,000 Per

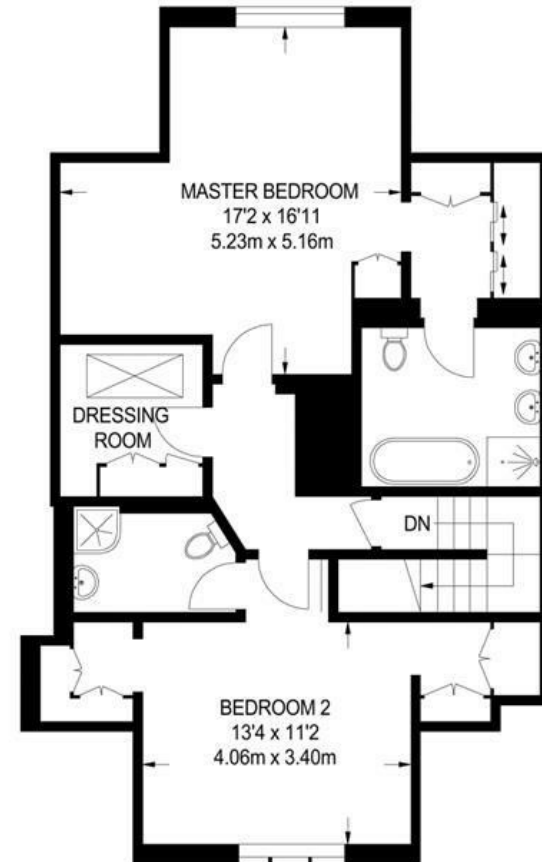
- Penthouse Apartment
- Three bedrooms with en suite bathrooms
- Porter service
- Underground private parking
- Private Terrace
- Additional room for staff / dressing room
- Direct Lift to Penthouse
- Air conditioning
- Ample Storage
- Large reception







FIFTH FLOOR
1128 SQ FT / 104.8 SQ M



SIXTH FLOOR
820 SQ FT / 76.2 SQ M

APPROXIMATE GROSS INTERNAL AREA
1948 SQ FT / 181.0 SQ M

Located in the Heart of Chelsea Harbour this luxury split level penthouse benefits from a spacious living room, private terrace, modern kitchen, air-conditioning, three double bedrooms with en suite bathrooms and additional single room/dressing room.

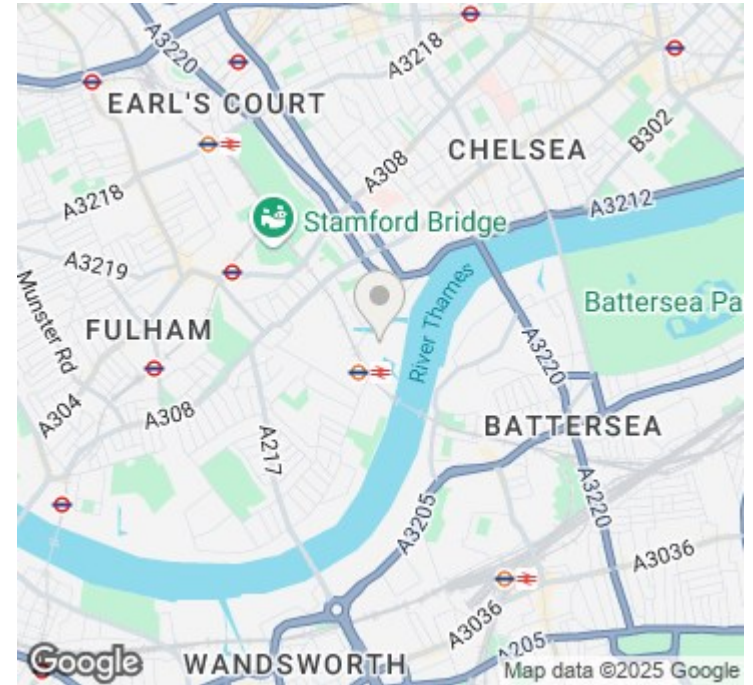
The Quadrangle building benefits from porter service, 24hr CCTV and riverside location. Just moments away from Imperial Wharf Overground and various local shops and restaurants.





KNIGHTSBRIDGE

INTERNATIONAL REAL ESTATE



Energy Efficiency Rating

	Current	Potential
Very energy efficient - lower running costs		
(92 plus) A		
(81-91) B		
(69-80) C	75	79
(55-68) D		
(39-54) E		
(21-38) F		
(1-20) G		
Not energy efficient - higher running costs		
England & Wales	EU Directive 2002/91/EC 