



## 35-37 Lough Road

London

£2,350 Per month

A split level, two bedroom flat opposite Paradise Park and available early August and comes furnished.

With well proportioned rooms in good condition throughout including wooden floors, two good sized double bedrooms, an open plan kitchen/living room with a quaint nook perfect as a study space, and access to a communal patio.

Lough road is well located close to multiple transport links and within easy access of Upper Street and the Piccadilly line at Caledonian Road. Nearby the Victoria and Overground lines are at Highbury and Islington Station, and a selection of bus routes offering access across London and to the international links from St Pancras.

Deposit of £2,711.53 based on the full asking price.  
Islington Council Tax Band D.

- Two Bedrooms
- Split Level Over Two Floors
- Opposite Paradise Park
- Communal Patio
- Newly Refurbished
- Available early August

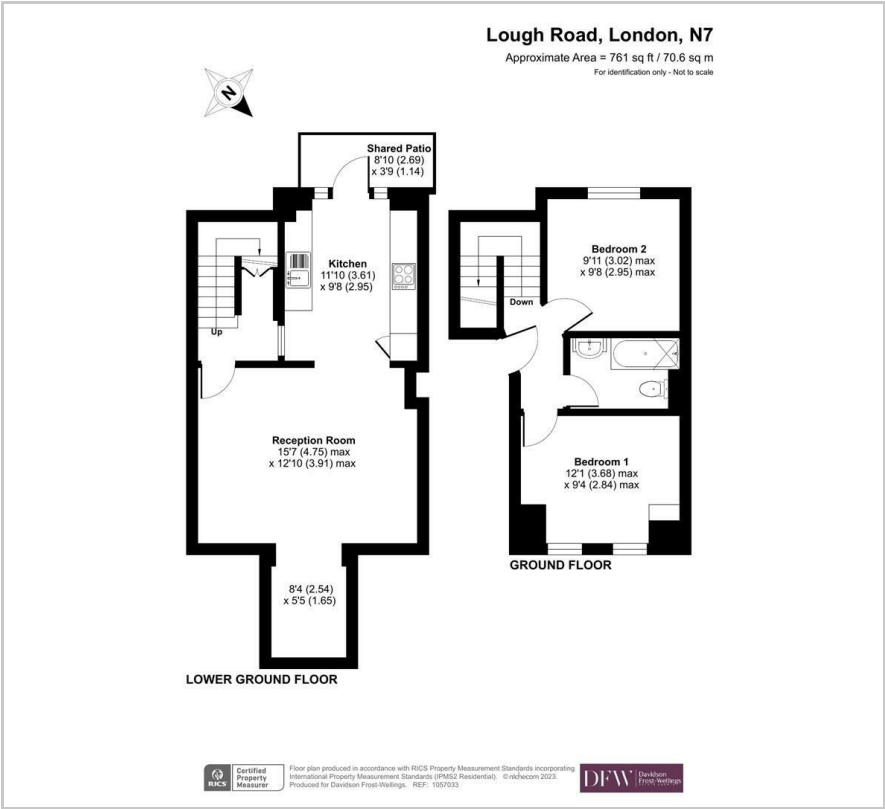
### Viewing

Please contact our Davidson Frost-Wellings Office on 020 8954 8806 if you wish to arrange a viewing appointment for this property or require further information.

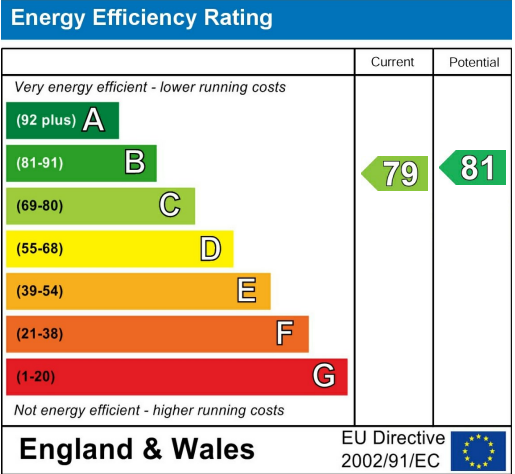
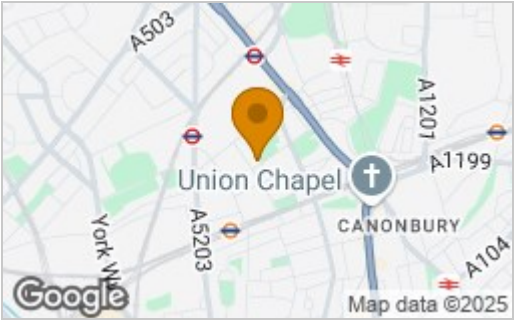




Floor Plan



Area Map



These particulars, whilst believed to be accurate are set out as a general outline only for guidance and do not constitute any part of an offer or contract. Intending purchasers should not rely on them as statements of representation of fact, but must satisfy themselves by inspection or otherwise as to their accuracy. No person in this firms employment has the authority to make or give any representation or warranty in respect of the property.