



Howard Road Stanmore £375,000

A one bedroom property available in excellent condition with Davidson Frost-Wellings.

The flat is on the first floor of a modern building in the popular, secure, well-located Stanmore Place. The property has an open-plan kitchen living room with sliding doors leading to a private balcony overlooking communal gardens and beautiful fountains. There is also a double bedroom with built in storage, a large family bathroom plus a utilities cupboard.

Stanmore Place is in an excellent location for Canon's Park tube station. On site and included residents is a communal garden, gym, a children's playground, a 24 hour concierge and a secure parking space.

Leasehold with 999 years from 2025.
Service charge of approximately £2800 per annum.
Ground rent of approximately £800 per annum.
Harrow Council Tax Band C.

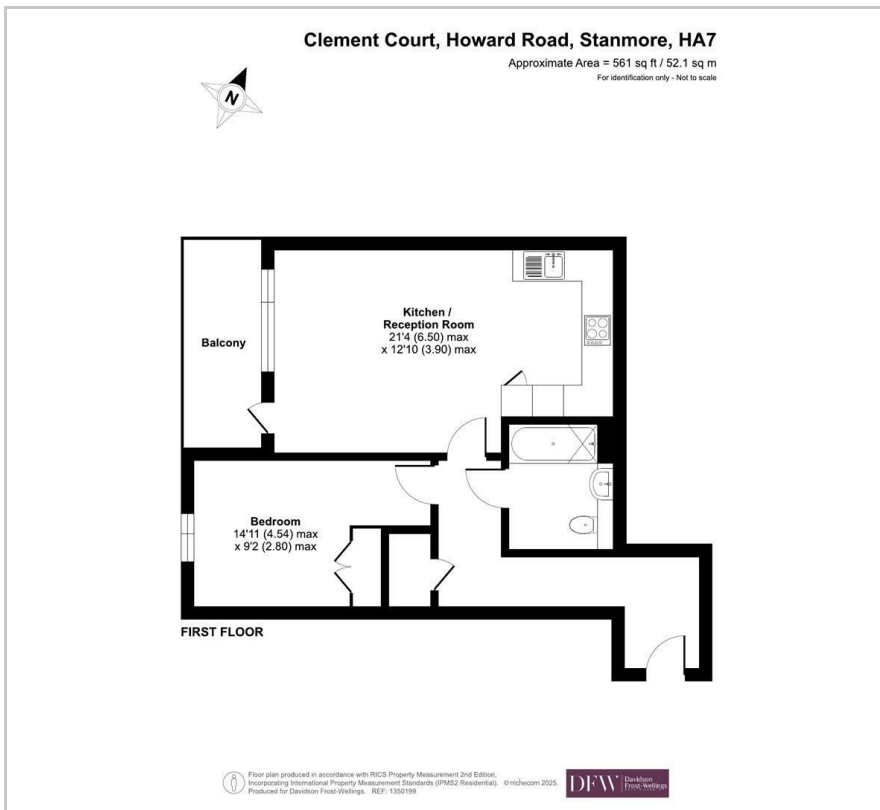
Viewing

Please contact our Davidson Frost-Wellings Office on 020 8954 8806 if you wish to arrange a viewing appointment for this property or require further information.

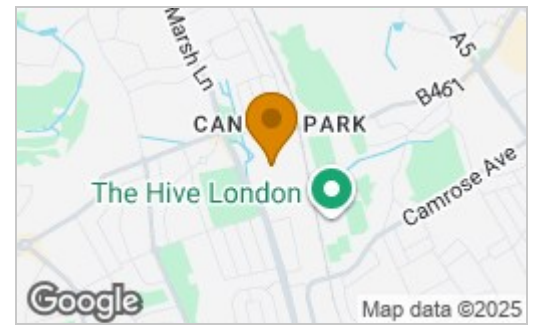
- One bedroom
- Private balcony
- Chain free
- Open plan kitchen
- Secure parking space
- Long leasehold



Floor Plan

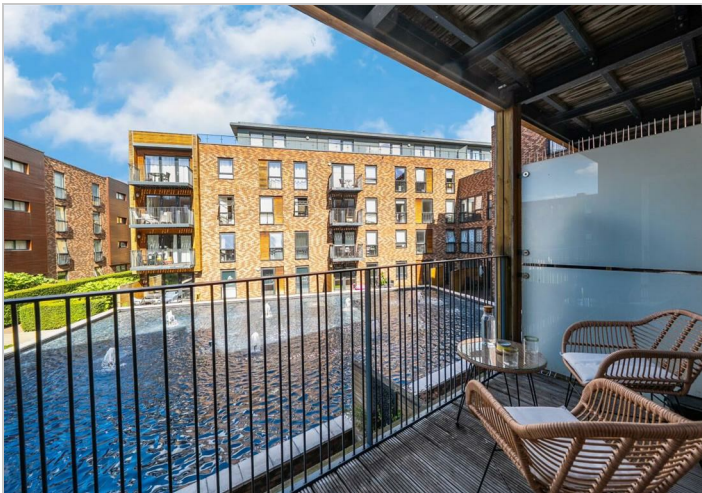


Area Map



Energy Efficiency Rating

	Current	Potential
Very energy efficient - lower running costs		
(92 plus) A		
(81-91) B		
(69-80) C	79	79
(55-68) D		
(39-54) E		
(21-38) F		
(1-20) G		
Not energy efficient - higher running costs		
England & Wales	EU Directive 2002/91/EC	



These particulars, whilst believed to be accurate are set out as a general outline only for guidance and do not constitute any part of an offer or contract. Intending purchasers should not rely on them as statements of representation of fact, but must satisfy themselves by inspection or otherwise as to their accuracy. No person in this firm's employment has the authority to make or give any representation or warranty in respect of the property.