



## Whitchurch Gardens

Edgware

£800,000

A detached house on a spacious plot with Davidson Frost-Wellings.

This three bedroom house is available in original 1930s condition and offers an excellent opportunity for someone to develop into a modern family home on a residential no-through road close to Canons Park.

On the ground floor the house has three reception rooms, a spacious hallway, a separate kitchen and an integrated garage. On the first floor there are two double bedrooms with access to built-in storage space, an additional third bedroom, plus a family bathroom.

Harrow Council Tax Band F.

### Viewing

Please contact our Davidson Frost-Wellings Office on 020 8954 8806 if you wish to arrange a viewing appointment for this property or require further information.

- Three bedrooms
- Requires modernisation
- Detached house
- Spacious plot
- Multiple reception rooms
- Freehold



3



1



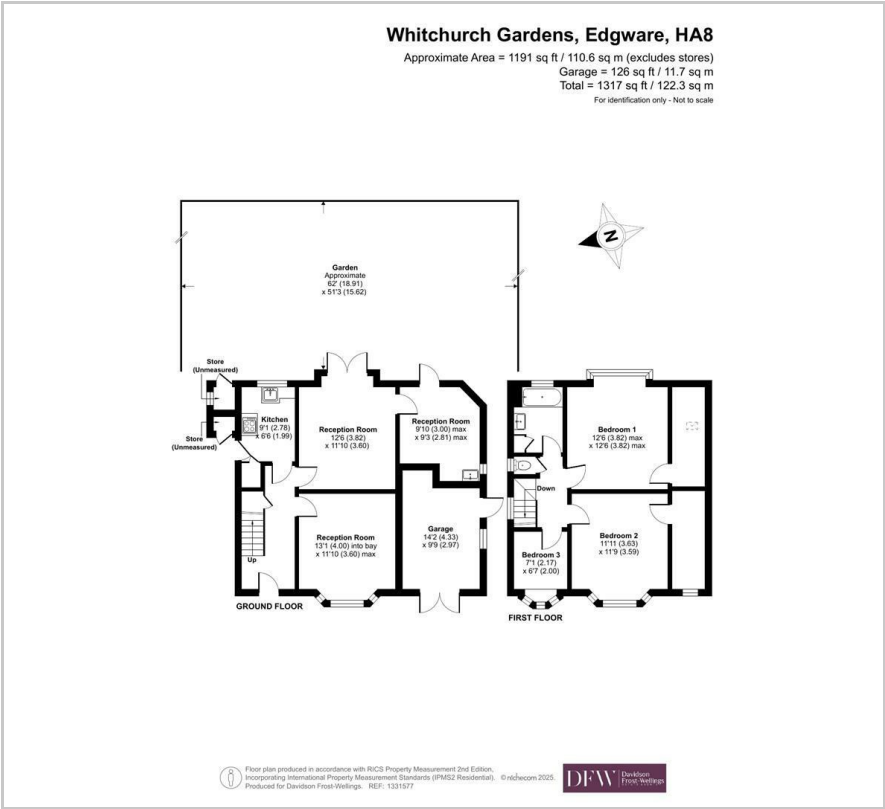
3



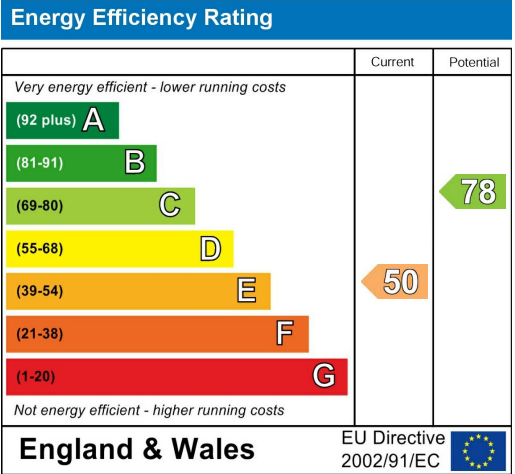
E



Floor Plan



Area Map



These particulars, whilst believed to be accurate are set out as a general outline only for guidance and do not constitute any part of an offer or contract. Intending purchasers should not rely on them as statements of representation of fact, but must satisfy themselves by inspection or otherwise as to their accuracy. No person in this firms employment has the authority to make or give any representation or warranty in respect of the property.