



Montague Hall Place

Bushey

£570,000

Davidson Frost-Wellings are pleased to present this three bedroom, two bathroom family home located on a quiet turning in Bushey Village. This home benefits from a garage and parking.

Bushey Station and its direct link into Central London is within walking distance, conveniently positioned for leafy walks as well as an abundance of independent cafes, bars and restaurants along the high street, a short walk away. In addition, there is various bus routes to Stanmore and Watford as well as the M1, M25 and A41. A variety of well-regarded nurseries, primary schools and secondary schools are on your doorstep, as well as being close by to the vibrant Bushey High Street and Bushey Village which is flooded with many different shops and eateries. Watford Shopping Centre is also just a short drive away providing further entertainment and recreational facilities.

Hertsmere Council Tax Band E

Viewing

Please contact our Davidson Frost-Wellings Office on 020 8954 8806 if you wish to arrange a viewing appointment for this property or require further information.

- Three bedrooms
- Two bathrooms
- Garage plus parking
- Terraced House
- Private Low-Maintenance Rear Garden
- Modern Kitchen with Integral Appliances & Breakfast Bar



3



2

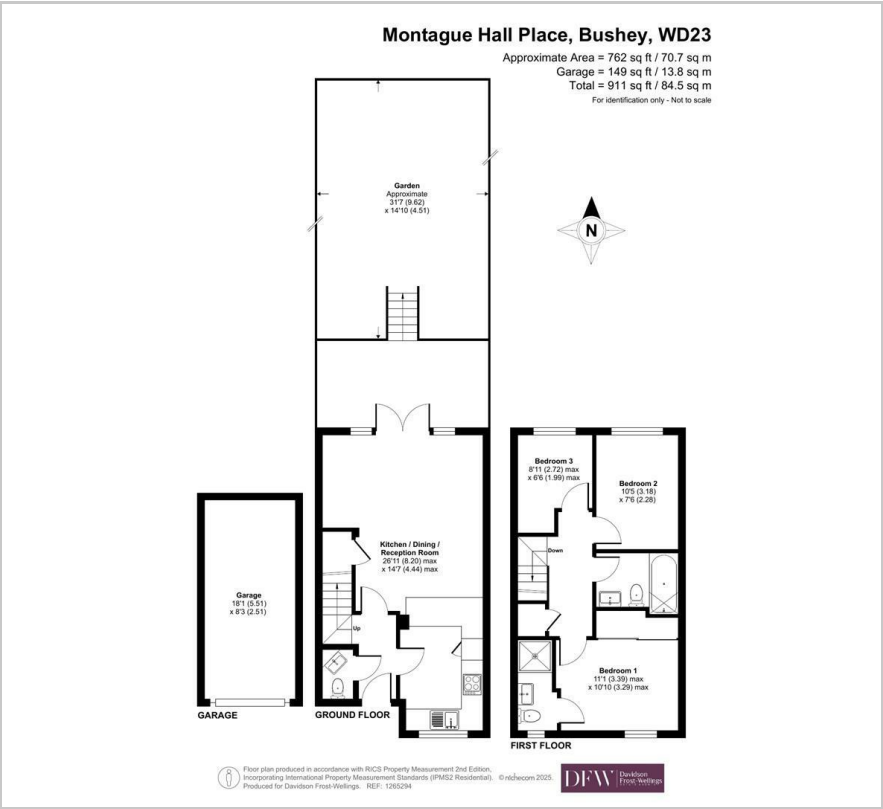


1

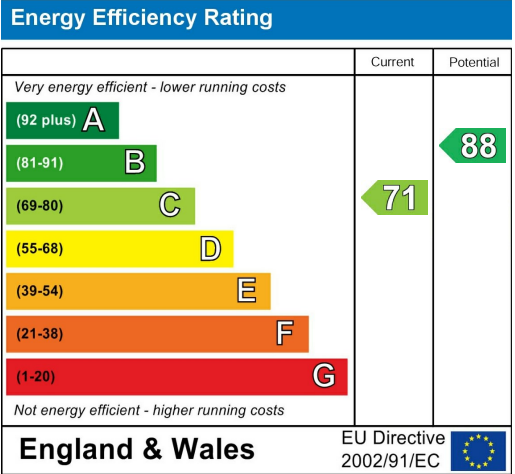
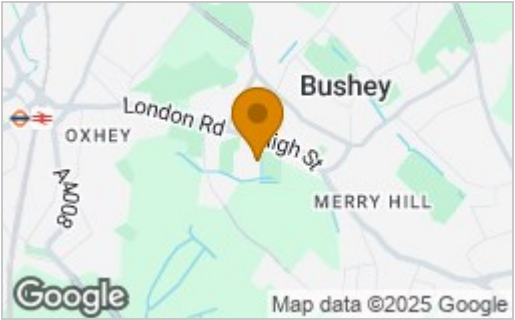


C

Floor Plan



Area Map



These particulars, whilst believed to be accurate are set out as a general outline only for guidance and do not constitute any part of an offer or contract. Intending purchasers should not rely on them as statements of representation of fact, but must satisfy themselves by inspection or otherwise as to their accuracy. No person in this firms employment has the authority to make or give any representation or warranty in respect of the property.