



Earlswood Court, Lacey Drive

Edgware

£430,000

A two bedroom, two bathroom flat in the popular Edgware Green development.

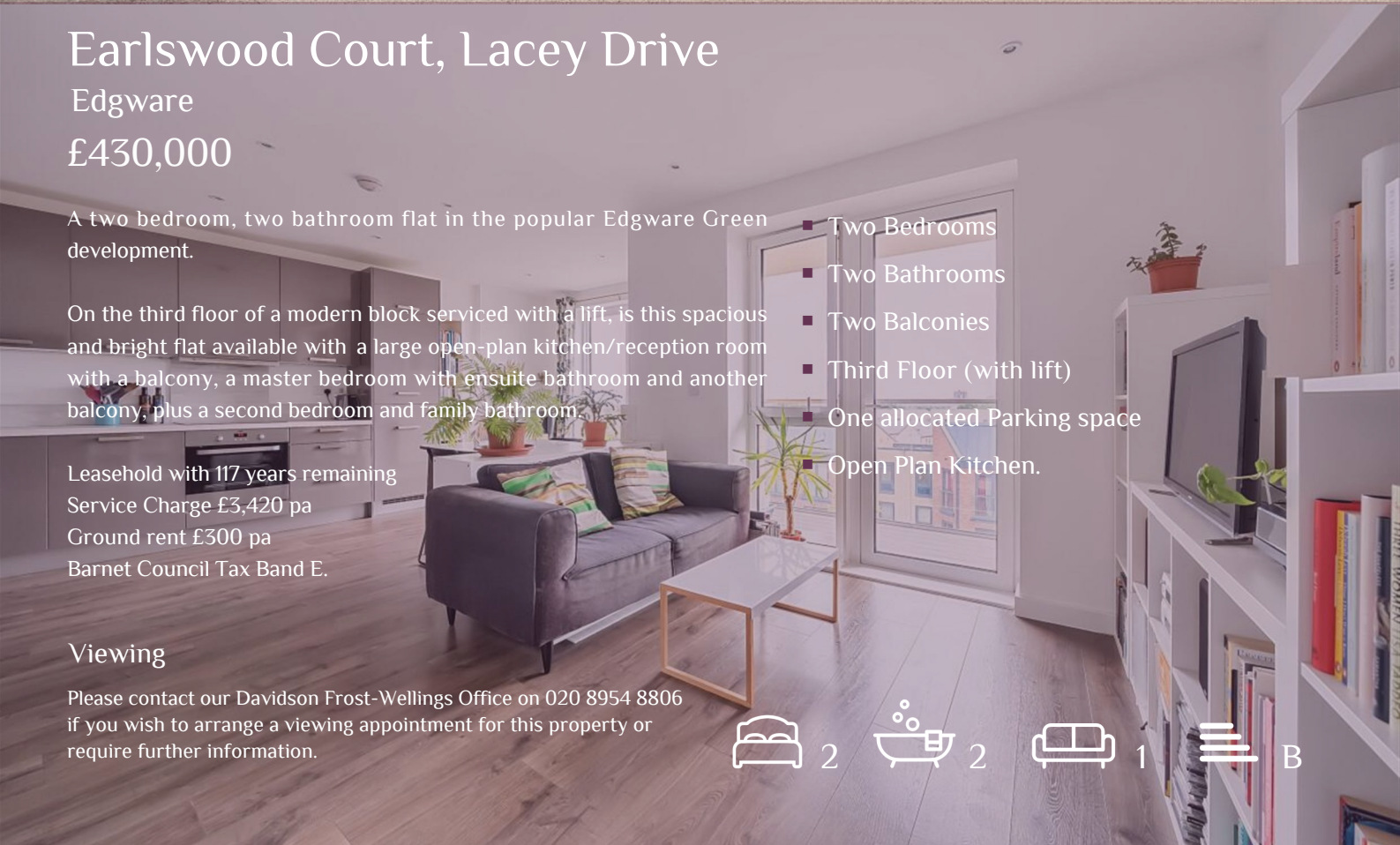
On the third floor of a modern block serviced with a lift, is this spacious and bright flat available with a large open-plan kitchen/reception room with a balcony, a master bedroom with ensuite bathroom and another balcony, plus a second bedroom and family bathroom.

Leasehold with 117 years remaining
 Service Charge £3,420 pa
 Ground rent £300 pa
 Barnet Council Tax Band E.

Viewing

Please contact our Davidson Frost-Wellings Office on 020 8954 8806 if you wish to arrange a viewing appointment for this property or require further information.

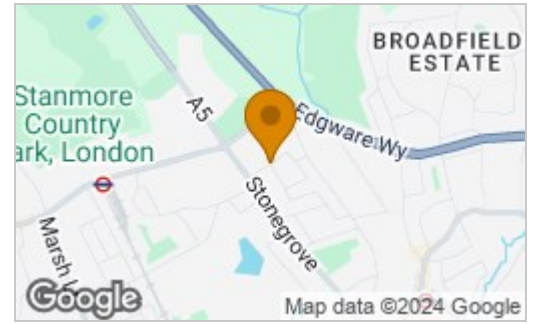
- Two Bedrooms
- Two Bathrooms
- Two Balconies
- Third Floor (with lift)
- One allocated Parking space
- Open Plan Kitchen.



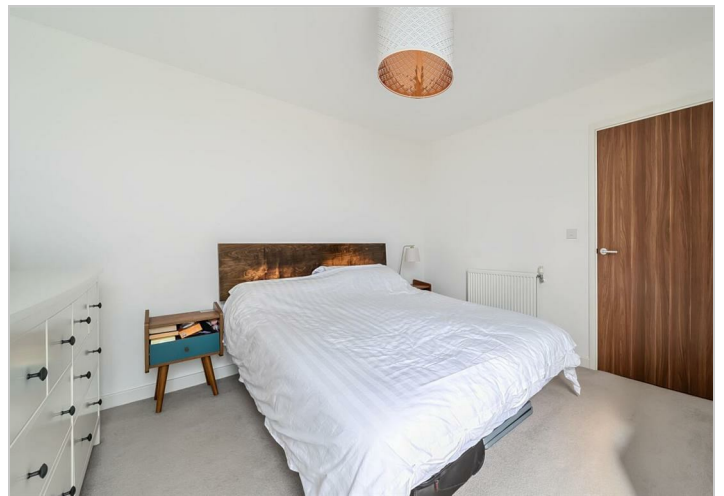
Floor Plan



Area Map



| Energy Efficiency Rating | | |
|---|-------------------------|-----------|
| | Current | Potential |
| Very energy efficient - lower running costs | | |
| (92 plus) A | | |
| (81-91) B | 82 | 82 |
| (69-80) C | | |
| (55-68) D | | |
| (39-54) E | | |
| (21-38) F | | |
| (1-20) G | | |
| Not energy efficient - higher running costs | | |
| England & Wales | EU Directive 2002/91/EC | |



These particulars, whilst believed to be accurate are set out as a general outline only for guidance and do not constitute any part of an offer or contract. Intending purchasers should not rely on them as statements of representation of fact, but must satisfy themselves by inspection or otherwise as to their accuracy. No person in this firm's employment has the authority to make or give any representation or warranty in respect of the property.