



Earlswood Court, Lacey Drive

Edgware

£410,000

A two bedroom flat available on the first floor (with lift) of a modern, popular development, with an underground parking space.

The flat has two bedrooms, two bathrooms, an open plan kitchen/living room with a private balcony.

Leasehold with 117 years remaining.

Service Charge of approximately £3531.96 per annum.

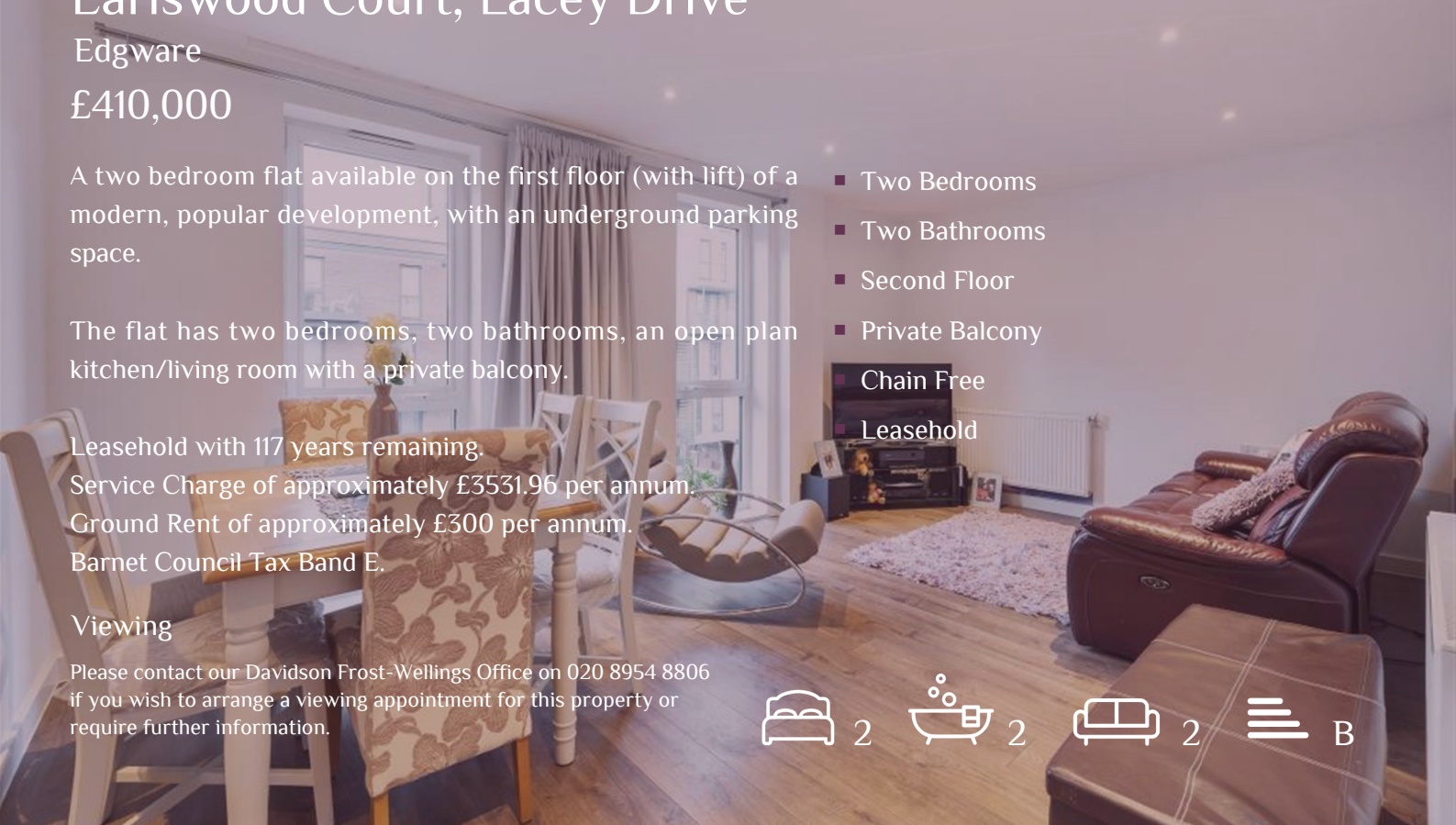
Ground Rent of approximately £300 per annum.

Barnet Council Tax Band E.

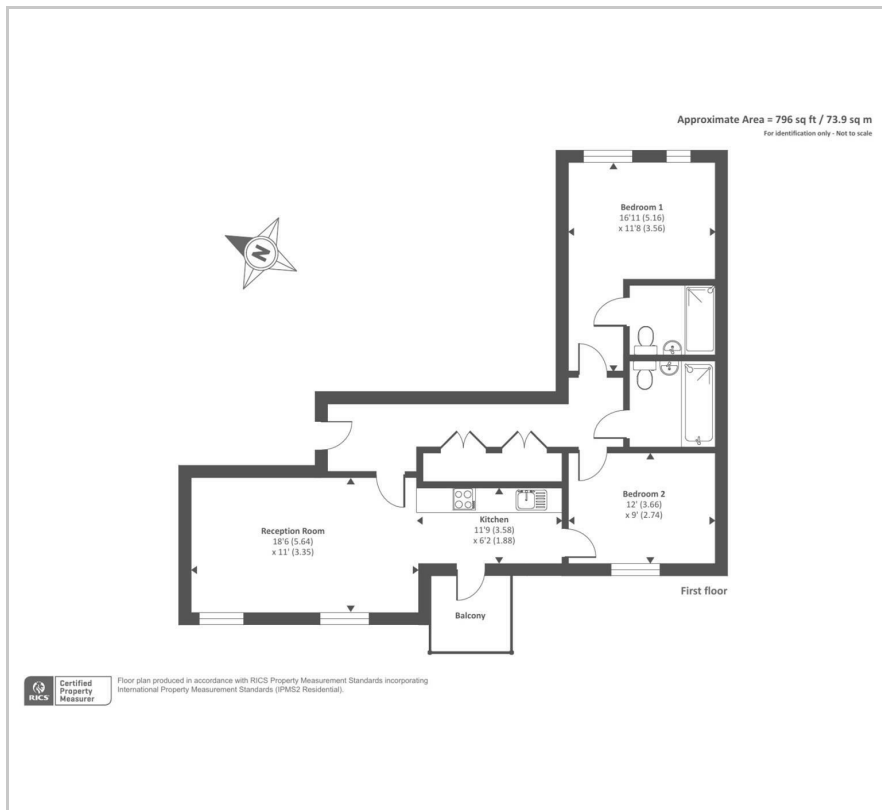
Viewing

Please contact our Davidson Frost-Wellings Office on 020 8954 8806 if you wish to arrange a viewing appointment for this property or require further information.

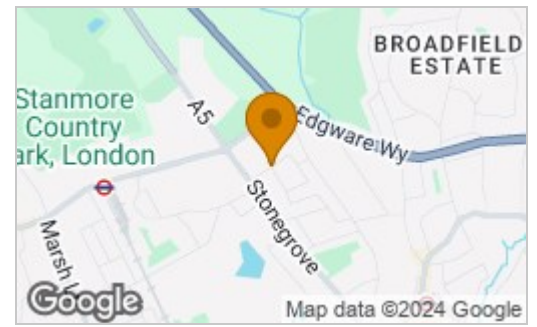
- Two Bedrooms
- Two Bathrooms
- Second Floor
- Private Balcony
- Chain Free
- Leasehold



Floor Plan



Area Map



Energy Efficiency Rating

	Current	Potential
Very energy efficient - lower running costs		
(92 plus) A		
(81-91) B	84	84
(69-80) C		
(55-68) D		
(39-54) E		
(21-38) F		
(1-20) G		
Not energy efficient - higher running costs		
England & Wales	EU Directive 2002/91/EC	



These particulars, whilst believed to be accurate are set out as a general outline only for guidance and do not constitute any part of an offer or contract. Intending purchasers should not rely on them as statements of representation of fact, but must satisfy themselves by inspection or otherwise as to their accuracy. No person in this firm's employment has the authority to make or give any representation or warranty in respect of the property.

47 The Broadway, Stanmore, HA7 4DJ

Tel: 020 8954 8806 Email: info@df-w.co.uk Website: www.df-w.co.uk