



Wentbridge Path

Borehamwood

£425,000

Davidson Frost-Wellings are proud to present this spacious Two bedroom mid-terraced house located only a short walk away from Leeming Road and all it's local amenities and places of worship.

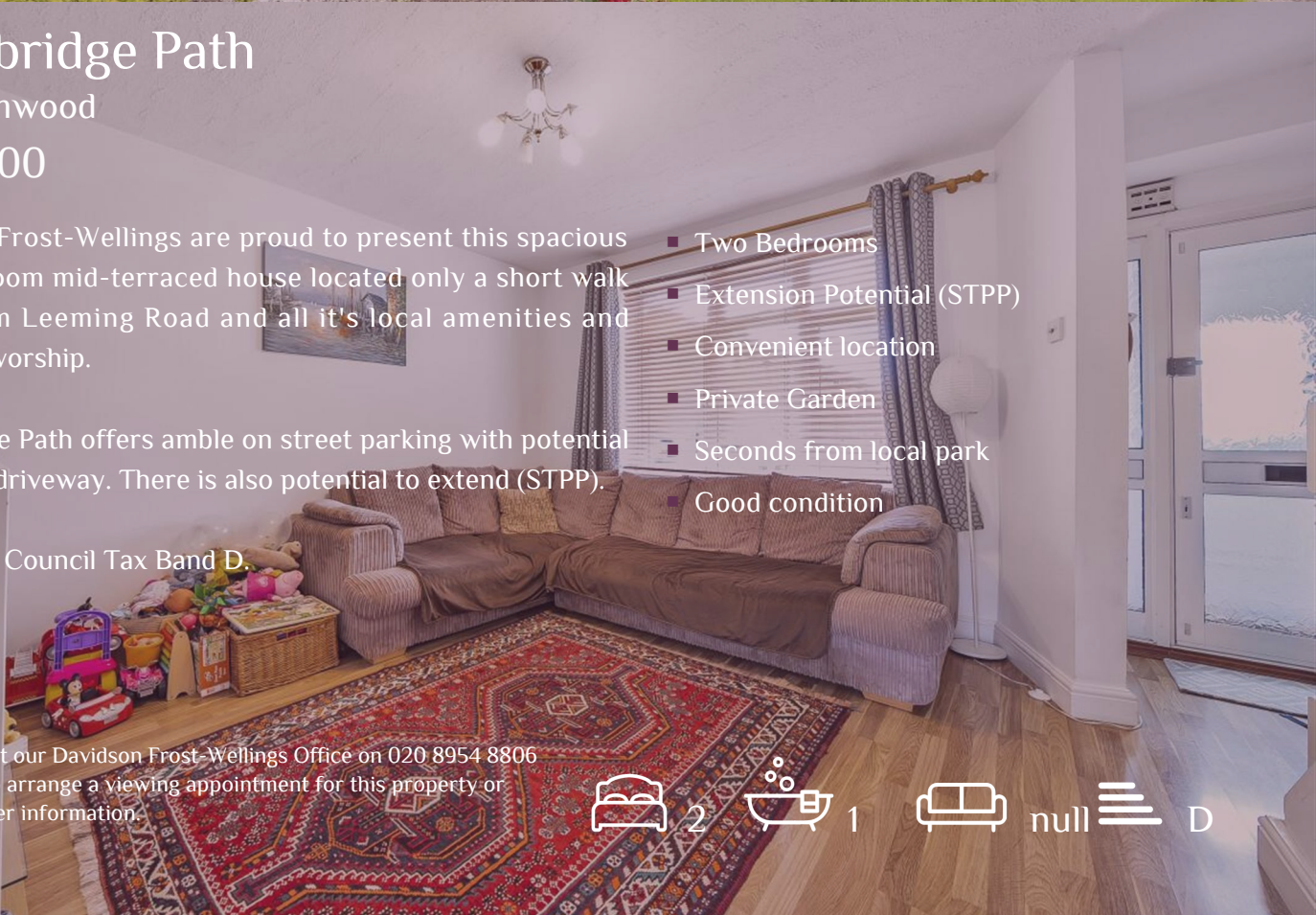
Wentbridge Path offers ample on street parking with potential to make a driveway. There is also potential to extend (STPP).

Hertsmere Council Tax Band D.

Viewing

Please contact our Davidson Frost-Wellings Office on 020 8954 8806 if you wish to arrange a viewing appointment for this property or require further information.

- Two Bedrooms
- Extension Potential (STPP)
- Convenient location
- Private Garden
- Seconds from local park
- Good condition



2



1

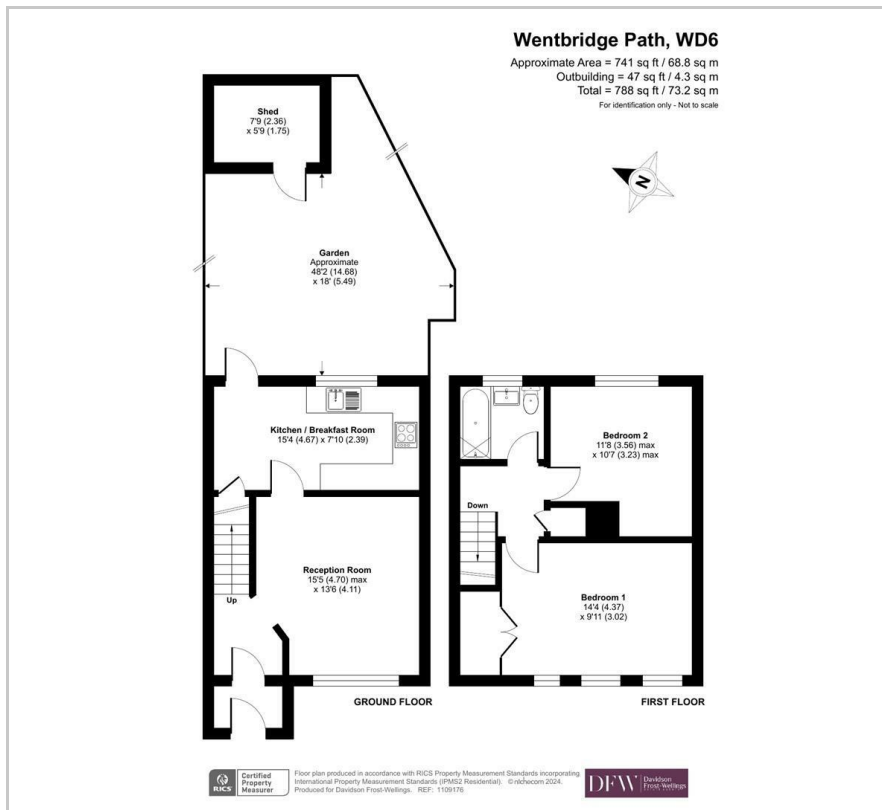


null

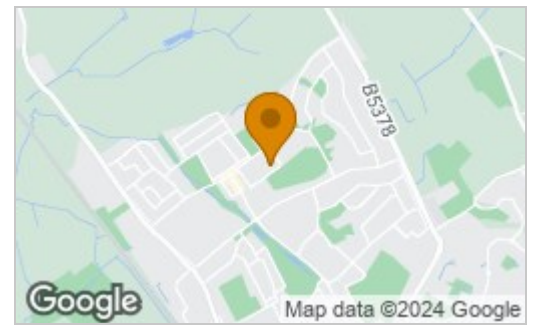


D

Floor Plan



Area Map



Energy Efficiency Rating		Current	Potential
Very energy efficient - lower running costs			
(92 plus) A			68
(81-91) B			
(69-80) C			
(55-68) D			
(39-54) E			
(21-38) F			
(1-20) G			
Not energy efficient - higher running costs			
England & Wales		EU Directive 2002/91/EC	



These particulars, whilst believed to be accurate are set out as a general outline only for guidance and do not constitute any part of an offer or contract. Intending purchasers should not rely on them as statements of representation of fact, but must satisfy themselves by inspection or otherwise as to their accuracy. No person in this firm's employment has the authority to make or give any representation or warranty in respect of the property.