



## Culver Grove

Stanmore

£649,000

A three bedroom, semi-detached house available chain free with Davidson Frost-Wellings.

On the ground floor the house has a double reception room, rear conservatory, modern galley kitchen and guest WC. Upstairs the house has two double bedrooms with built-in storage, a family bathroom and a third single bedroom.

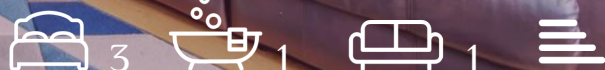
The house has a west-facing rear garden mostly laid to lawn with a sizeable outbuilding at the end of the garden perfect as a home office. At the front is off-street parking for two cars.

Harrow Council Tax Band E.

### Viewing

Please contact our Davidson Frost-Wellings Office on 020 8954 8806 if you wish to arrange a viewing appointment for this property or require further information.

- Three Bedrooms
- Off Street Parking for Two Cars
- Conservatory
- West Facing Garden
- Chain Free
- Semi-Detached Freehold

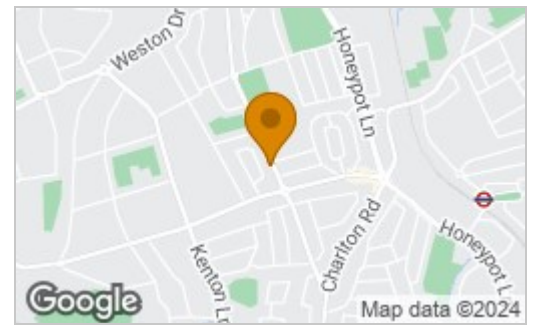




# Floor Plan

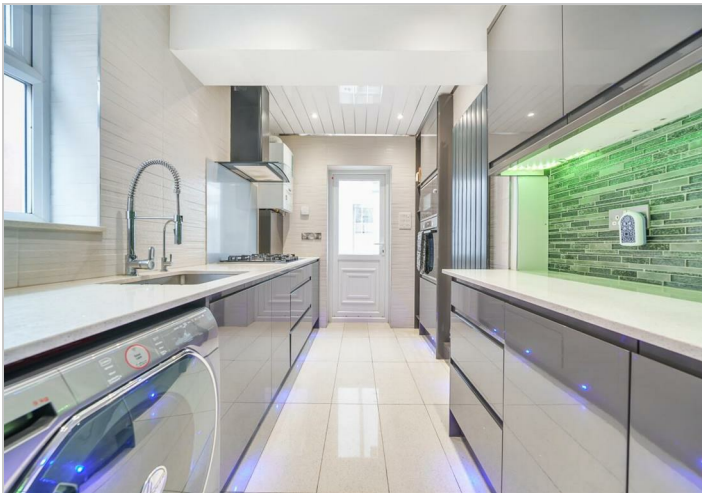


# Area Map



## Energy Efficiency Rating

	Current	Potential
<i>Very energy efficient - lower running costs</i>		
(92 plus) <b>A</b>		
(81-91) <b>B</b>		
(69-80) <b>C</b>		
(55-68) <b>D</b>		
(39-54) <b>E</b>		
(21-38) <b>F</b>		
(1-20) <b>G</b>		
<i>Not energy efficient - higher running costs</i>		
<b>England &amp; Wales</b>	EU Directive 2002/91/EC	



These particulars, whilst believed to be accurate are set out as a general outline only for guidance and do not constitute any part of an offer or contract. Intending purchasers should not rely on them as statements of representation of fact, but must satisfy themselves by inspection or otherwise as to their accuracy. No person in this firm's employment has the authority to make or give any representation or warranty in respect of the property.