



Hill Cottages, Grange Lane

Watford

£440,000

A charming, characterful, two bedroom cottage built over 100 years ago available in a central Letchmore Heath village location with Davidson Frost-Wellings.

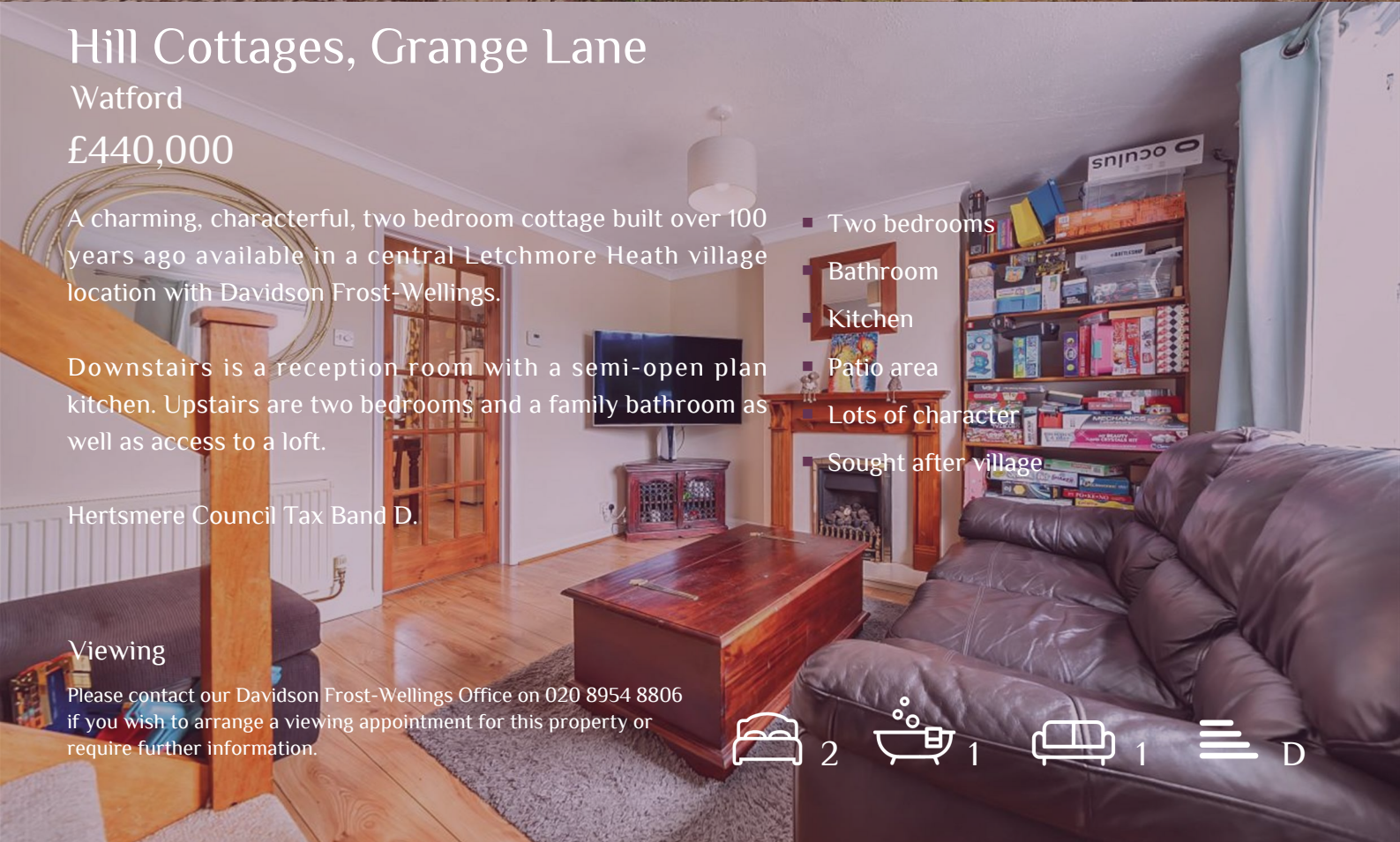
Downstairs is a reception room with a semi-open plan kitchen. Upstairs are two bedrooms and a family bathroom as well as access to a loft.

Hertsmere Council Tax Band D.

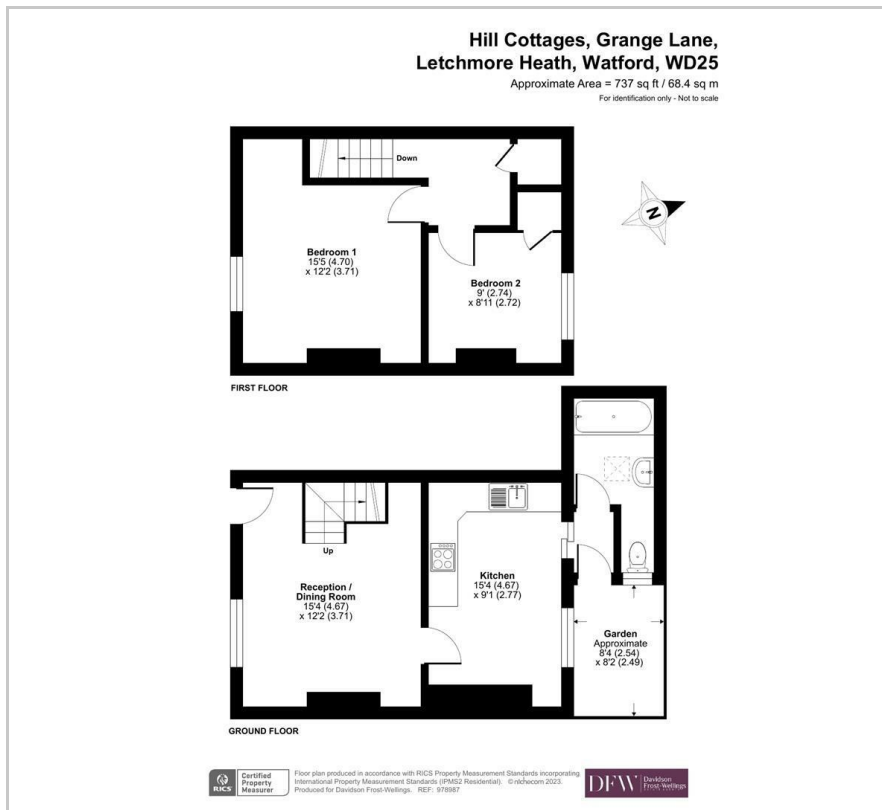
Viewing

Please contact our Davidson Frost-Wellings Office on 020 8954 8806 if you wish to arrange a viewing appointment for this property or require further information.

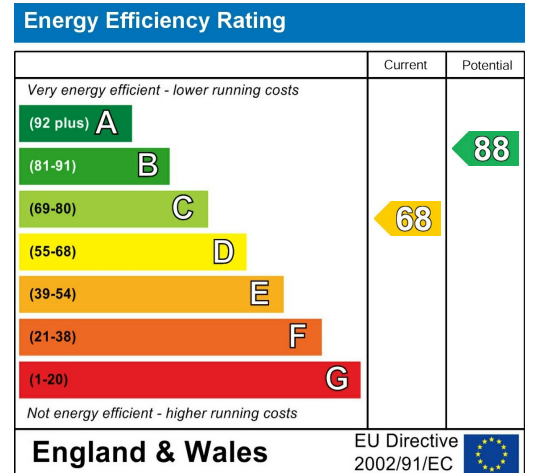
- Two bedrooms
- Bathroom
- Kitchen
- Patio area
- Lots of character
- Sought after village



Floor Plan



Area Map



These particulars, whilst believed to be accurate are set out as a general outline only for guidance and do not constitute any part of an offer or contract. Intending purchasers should not rely on them as statements of representation of fact, but must satisfy themselves by inspection or otherwise as to their accuracy. No person in this firm's employment has the authority to make or give any representation or warranty in respect of the property.