



Bromefield

Stanmore

Asking price £800,000

A detached, Laing house available on a popular road in Stanmore.

Downstairs the house has a large open plan reception/dining room with two bay windows and a separate galley kitchen. There is also a downstairs double bedroom with ensuite shower room. Upstairs the house has two double bedrooms, a third bedroom and a family bathroom.

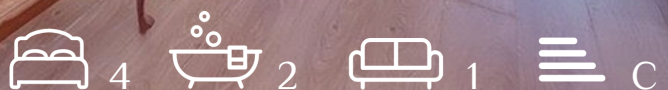
Bromefield within a 15 minute walk to Canons Park Station. Local schools within the catchment area include Whitchurch, Stanmore, Park High School and the New Avanti House School.

Harrow Council Tax Band F.

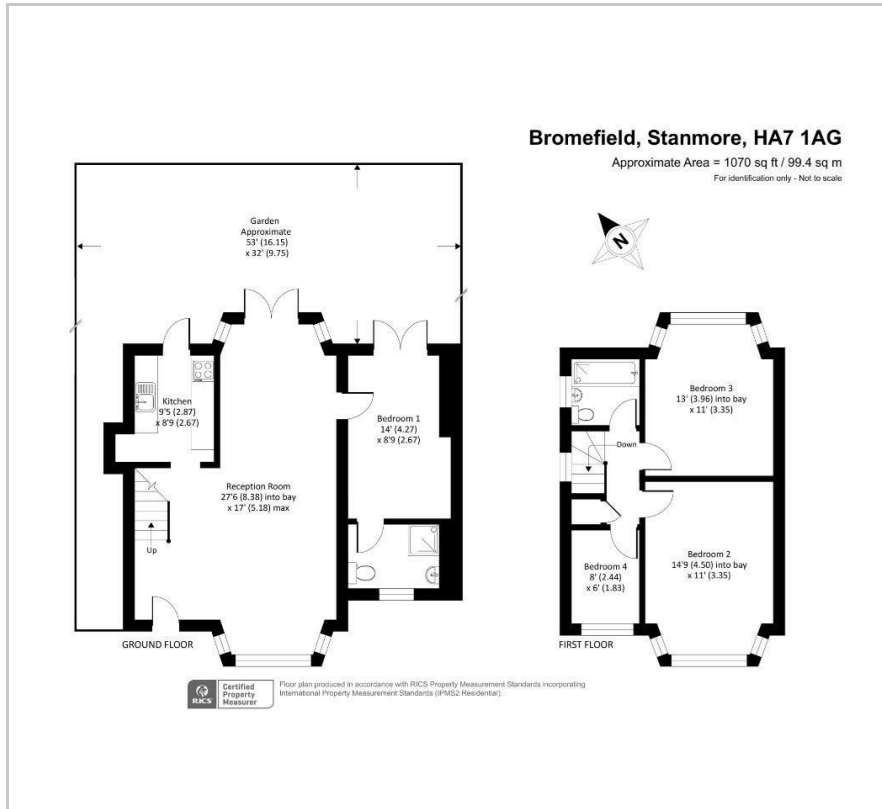
Viewing

Please contact our Davidson Frost-Wellings Office on 020 8954 8806 if you wish to arrange a viewing appointment for this property or require further information.

- Four Bedrooms
- Two Bathrooms
- Large Garden
- Lots of Off Street Parking
- Extension Potential
- Detached Freehold



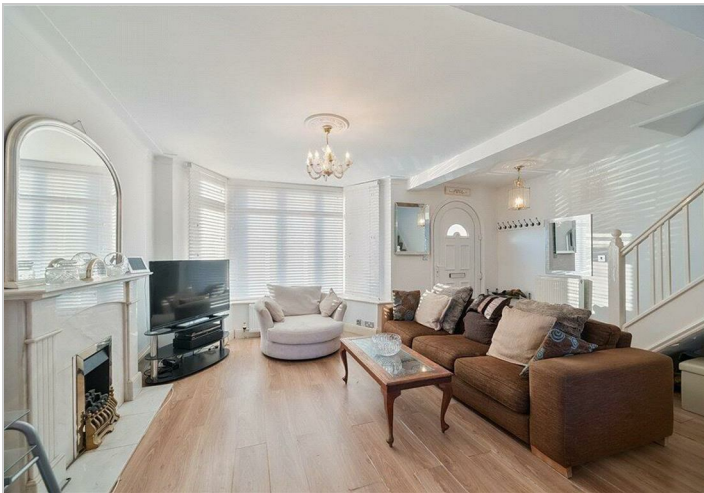
Floor Plan



Area Map



Energy Efficiency Rating		
	Current	Potential
Very energy efficient - lower running costs		
(92 plus) A		84
(81-91) B		
(69-80) C	72	
(55-68) D		
(39-54) E		
(21-38) F		
(1-20) G		
Not energy efficient - higher running costs		
England & Wales		EU Directive 2002/91/EC



These particulars, whilst believed to be accurate are set out as a general outline only for guidance and do not constitute any part of an offer or contract. Intending purchasers should not rely on them as statements of representation of fact, but must satisfy themselves by inspection or otherwise as to their accuracy. No person in this firm's employment has the authority to make or give any representation or warranty in respect of the property.