



Gleneagles

Stanmore

£595,000

A fabulous, two bedroom flat available with its own front door in an excellent location in the centre of Stanmore, next to and overlooking Stanmore golf course.

The flat has a large reception / dining room, a separate eat-in kitchen as well as a large master bedroom with Ensuite bathroom and built-in wardrobes. The flat has an additional double bedroom, a family bathroom and lots of built-in storage.

The rear private garden is mature and low maintenance with an irrigation system. The house is on a quiet no-through road next to Stanmore golf course offering exceptional views and a tranquil outlook.

Share Of Freehold with approximately 987 years on the underlying lease.

Ground Rent Nil.

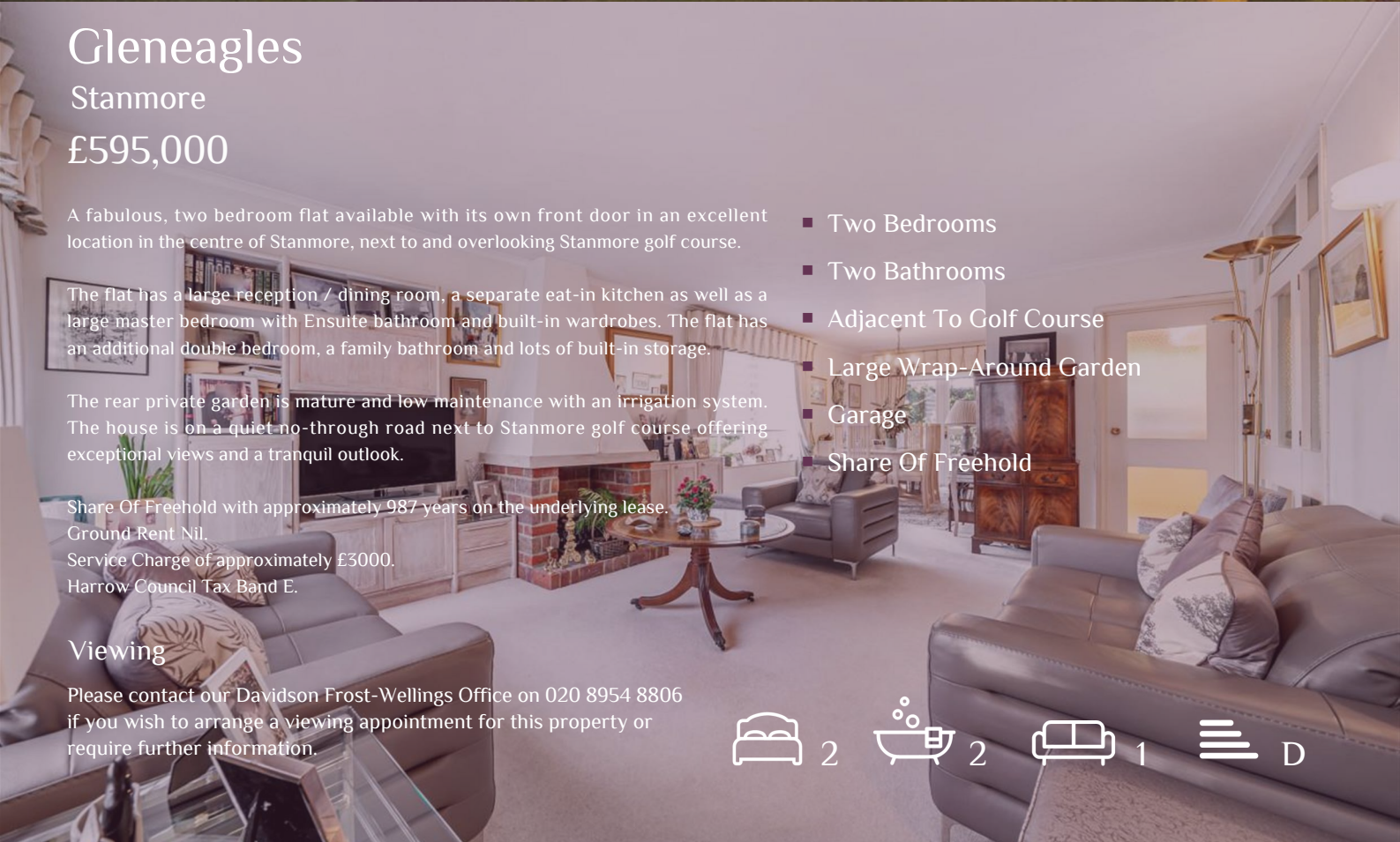
Service Charge of approximately £3000.

Harrow Council Tax Band E.

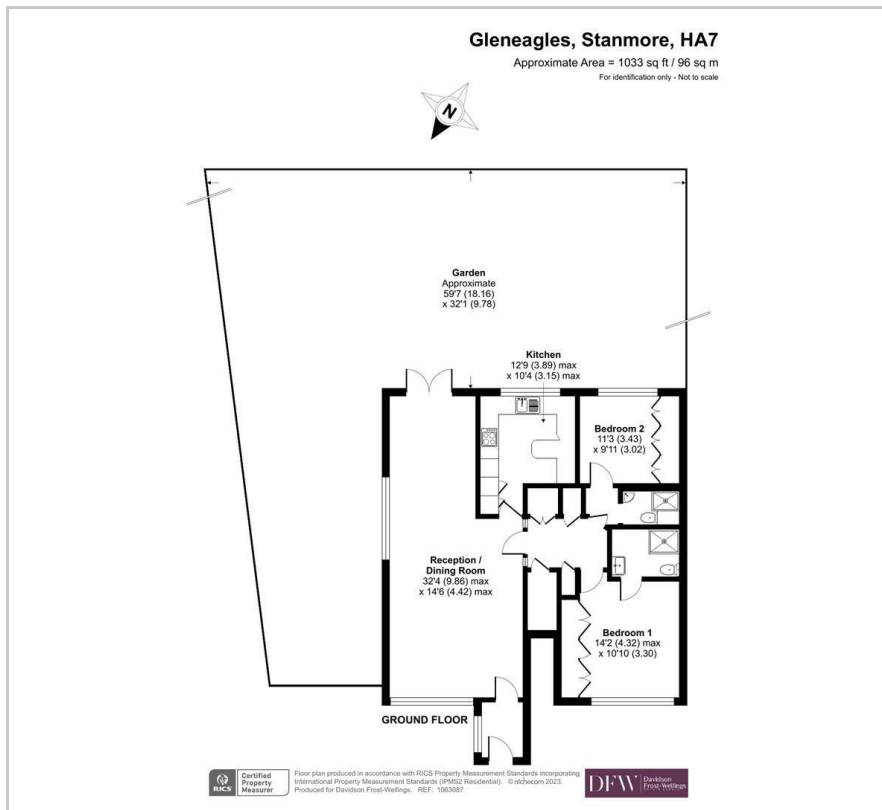
- Two Bedrooms
- Two Bathrooms
- Adjacent To Golf Course
- Large Wrap-Around Garden
- Garage
- Share Of Freehold

Viewing

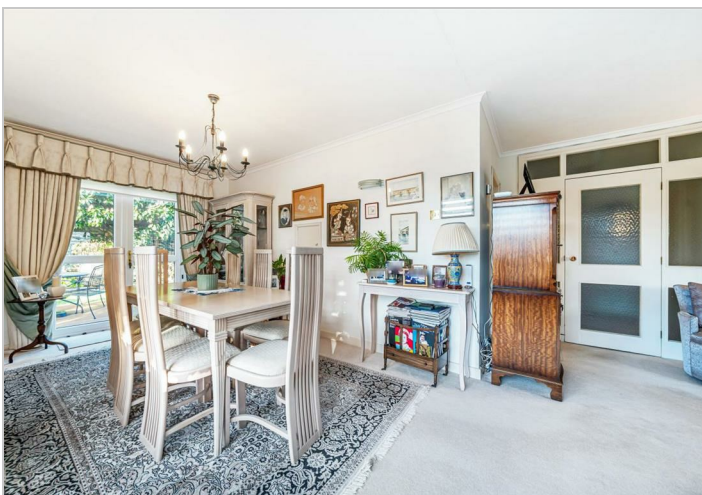
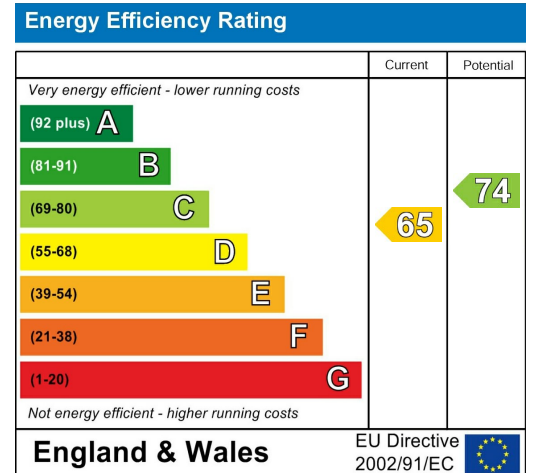
Please contact our Davidson Frost-Wellings Office on 020 8954 8806 if you wish to arrange a viewing appointment for this property or require further information.



Floor Plan



Area Map



These particulars, whilst believed to be accurate are set out as a general outline only for guidance and do not constitute any part of an offer or contract. Intending purchasers should not rely on them as statements of representation of fact, but must satisfy themselves by inspection or otherwise as to their accuracy. No person in this firm's employment has the authority to make or give any representation or warranty in respect of the property.