



Brookmill Close

Watford

£550,000

A modern, three bedroom semi detached house available with Davidson Frost-Wellings.

The house has a reception room with dining space, as well as a downstairs WC and a modern separate kitchen. Upstairs the house has three bedrooms with an ensuite off the master, as well as a family bathroom.

There is single garage and a low-maintenance garden. Extension potential is available on both stories (subject to planning permission).

Three Rivers Council Tax Band E.

Viewing

Please contact our Davidson Frost-Wellings Office on 020 8954 8806 if you wish to arrange a viewing appointment for this property or require further information.

- Three Bedrooms
 - Two Bathrooms
 - Private Garden
 - Modern Semi-Detached
 - Extension Potential
- Freehold



3



2

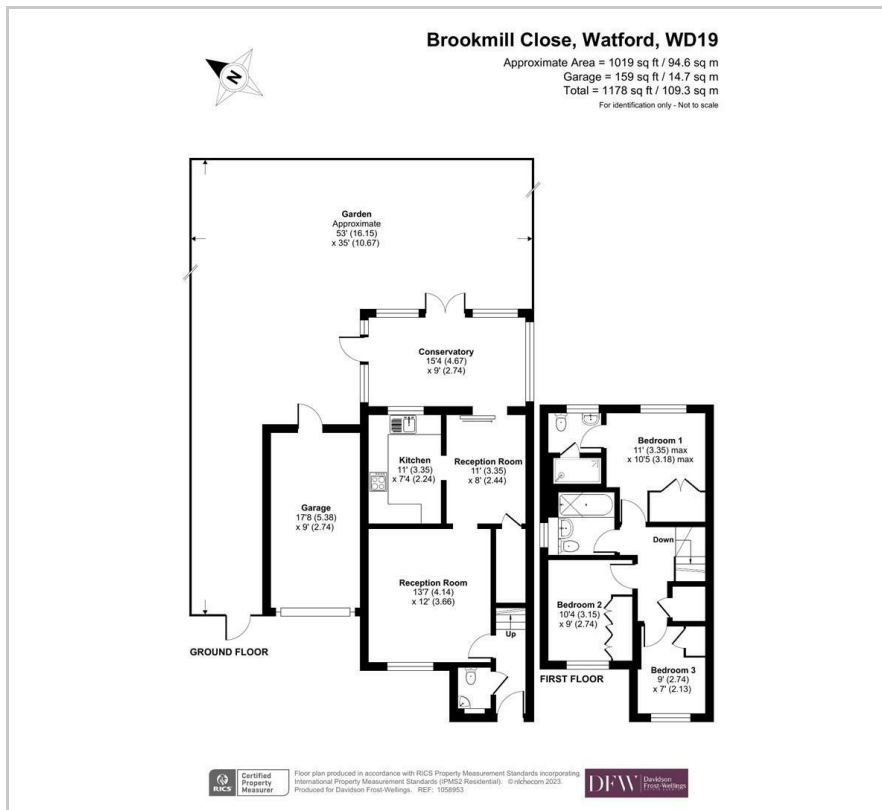


2



C

Floor Plan

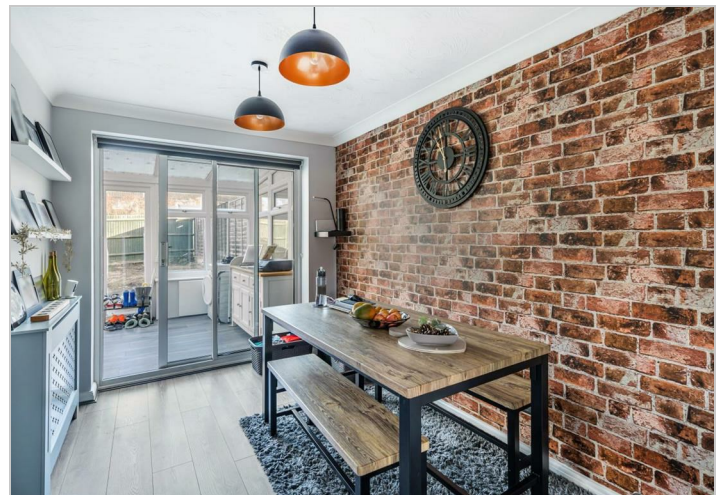


Area Map



Energy Efficiency Rating

	Current	Potential
Very energy efficient - lower running costs		
(92 plus) A		87
(81-91) B		
(69-80) C	70	
(55-68) D		
(39-54) E		
(21-38) F		
(1-20) G		
Not energy efficient - higher running costs		
England & Wales	EU Directive 2002/91/EC	



These particulars, whilst believed to be accurate are set out as a general outline only for guidance and do not constitute any part of an offer or contract. Intending purchasers should not rely on them as statements of representation of fact, but must satisfy themselves by inspection or otherwise as to their accuracy. No person in this firm's employment has the authority to make or give any representation or warranty in respect of the property.