



{ ROLFE TERRACE LONDON SE18
£1,718 PER MONTH AVAILABLE 04/02/2026

Hamptons
THE HOME EXPERTS

{ THE PARTICULARS

Rolfe Terrace London SE18

£1,718 Per Month
Furnished

-  1 Bedroom
-  1 Bathroom
-  1 Reception

Features

- One-bedroom apartment in a popular development, - Furnished or unfurnished options available, - One-month rent incentive already applied in the rent, - Parking available at extra cost, - Excellent transport connections

Council Tax

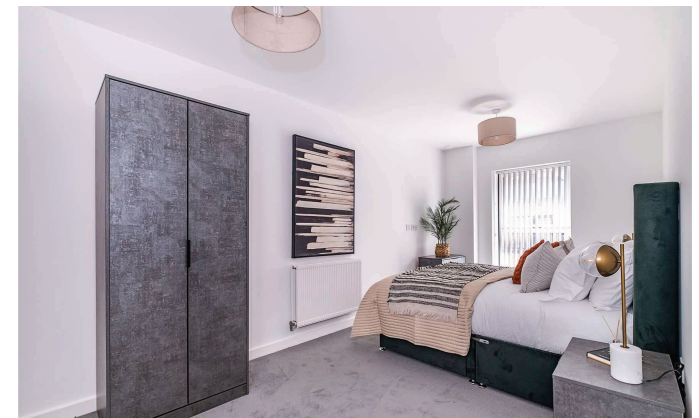
Council tax band not specified

Hamptons
11-13 Queen Street
Maidenhead, SL6 1NB
02089392370
HamptonsBTR@hamptons.co.uk
www.hamptons.co.uk

{ MODERN ONE-BEDROOM LIVING WITH FLEXIBLE FURNISHING OPTIONS.

The Property

Located in the well-regarded Wotton Court development, this attractive one-bedroom flat at Wotton Court, 2 Rolfe Terrace, SE18 6BN offers comfortable and flexible modern living in a convenient South East London location. The property features a bright and welcoming living space, a well-proportioned bedroom, and a contemporary kitchen and bathroom. The flat can be offered furnished or unfurnished, allowing flexibility to suit a range of tenants. The advertised rent already reflects a one-month rent incentive, providing excellent value from the outset. Parking is available at an additional cost, subject to availability. Residents benefit from a peaceful residential setting while remaining close to local amenities, green spaces, and excellent transport links providing easy access to Woolwich, Greenwich, and Canary Wharf. *Pictures are of show flat and not actual flat.*



No floor plan currently available

For Clarification
We wish to inform prospective tenants that we have prepared these particulars as a general guide and they have been confirmed as accurate by the landlord. We have not verified permissions, nor carried out a survey, tested the services, appliances and specific fittings. Room sizes are approximate and measurement figures rounded: they are taken between internal wall surfaces and therefore include cupboards/shelves, etc. Accordingly, they should not be relied upon for

carpets and furnishings. It should also be noted that all fixtures and fittings, carpeted, curtains/blinds, kitchen equipment and garden statuary, whether fitted or not, are deemed removable by the landlord unless specifically itemised with these particulars. Please enquire in office or on our website for details on holding deposit and tenancy deposit figures.

