



ECCLES, CHURCH STREET PLACE
£1,150 PER MONTH AVAILABLE 30/05/2025

Hamptons
THE HOME EXPERTS

{ THE PARTICULARS

Eccles, Church Street Place
Manchester M30

£1,150 Per Month
Furnished

 1 Bedroom
 1 Bathroom
 1 Reception

Features

- Studio, 1, 2 & 3-bed apartments with modern design, - Premium kitchens with Bosch appliances, - Choice of 2 luxury furniture packages, - Concierge service & onsite management, - Secure entry, CCTV & parcel room, - Communal gardens & lift access, - Pet-friendly apartments available, - Indoor & outdoor bike storage, - Parking available on-site, - Excellent transport links to Manchester & Salford Quays

Council Tax

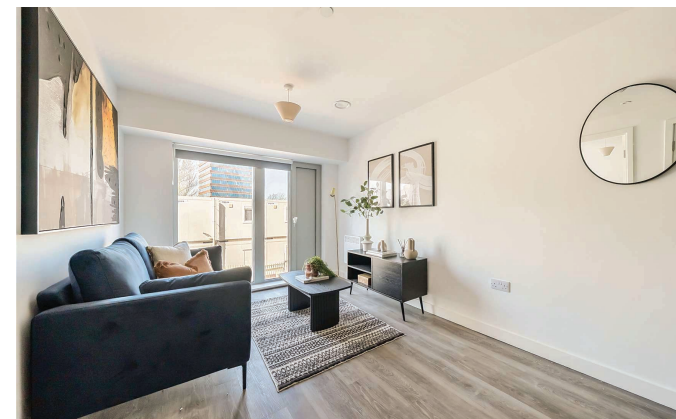
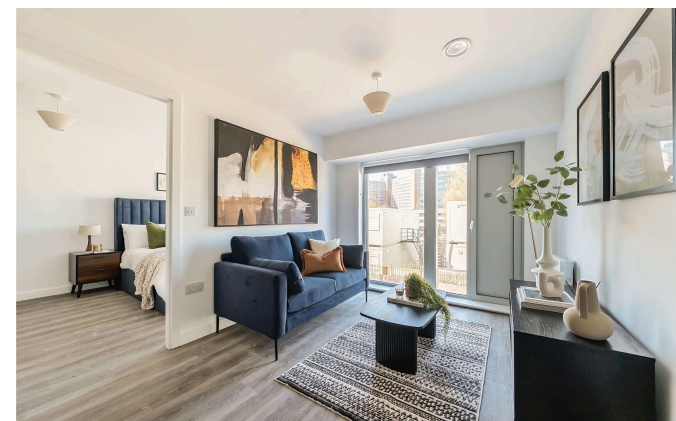
Council tax band not specified

Hamptons
www.hamptons.co.uk

{ SUPERB 1 BEDROOM FLAT FOR RENT!!

The Property

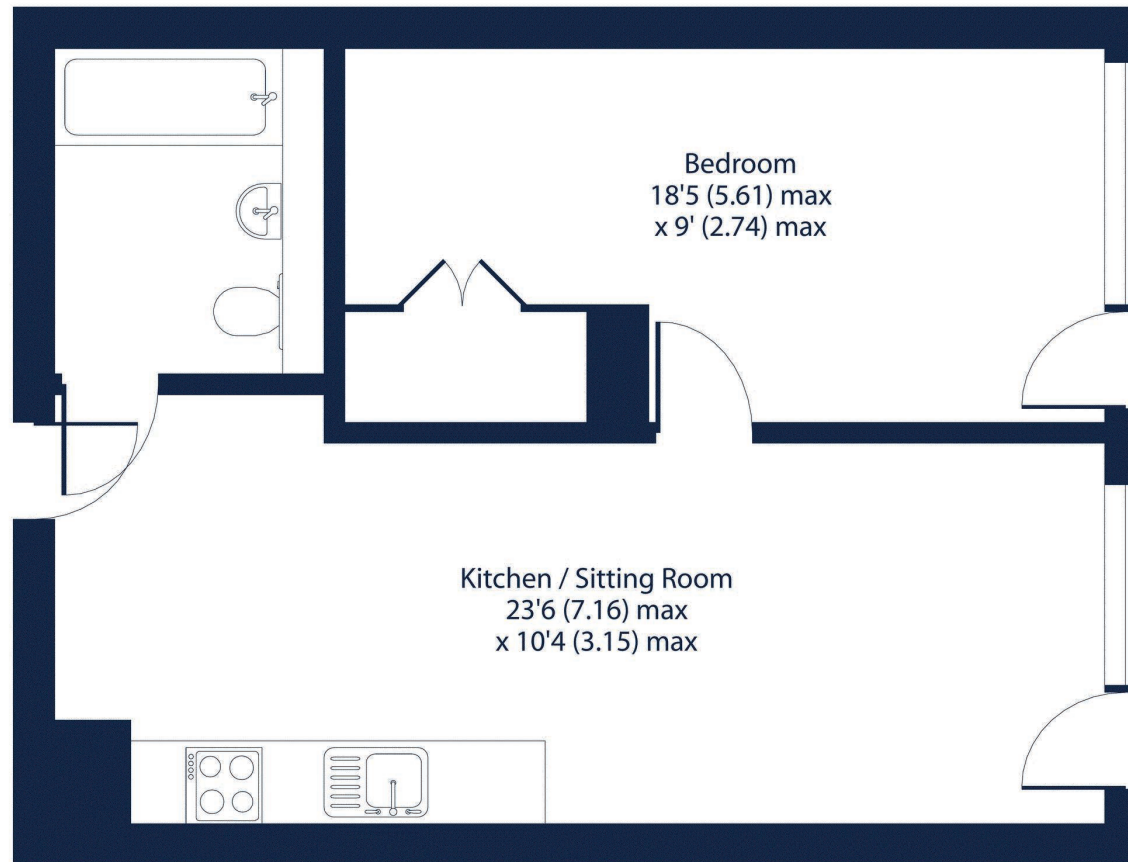
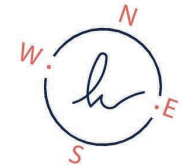
Welcome to Eccles, a stylish collection of studio, one, two, and three-bedroom apartments designed for easy, modern living. With a focus on comfort and convenience, this thoughtfully designed development offers helpful onsite management, concierge services, secure entry, CCTV, and a dedicated parcel room for peace of mind. Step inside and you'll find calm, contemporary interiors with high-quality finishes. Kitchens come fully fitted with Bosch appliances, including an oven, induction hob, fridge-freezer, integrated dishwasher, and washer-dryer making everyday life that bit easier. Choose from two beautifully curated furniture packages, featuring soft velvet armchairs, sleek media units, and elegant details throughout. Bedrooms offer a cosy retreat, complete with ottoman beds, pocket-sprung mattresses, and soft-close storage for a clutter-free space. Ideally located, Eccles makes getting around simple, with great connections by rail, bus, and Metrolink to Manchester city centre, MediaCityUK, and Salford Quays. Surrounded by green spaces, good schools, cultural spots, and plenty of local shops and eateries, it's a welcoming place to call home whether you're settling in solo, as a couple, or with family.



Vicarage Grove, Eccles, Manchester, M30

Approximate Area = 472 sq ft / 43.8 sq m

For identification only - Not to scale



FIRST FLOOR

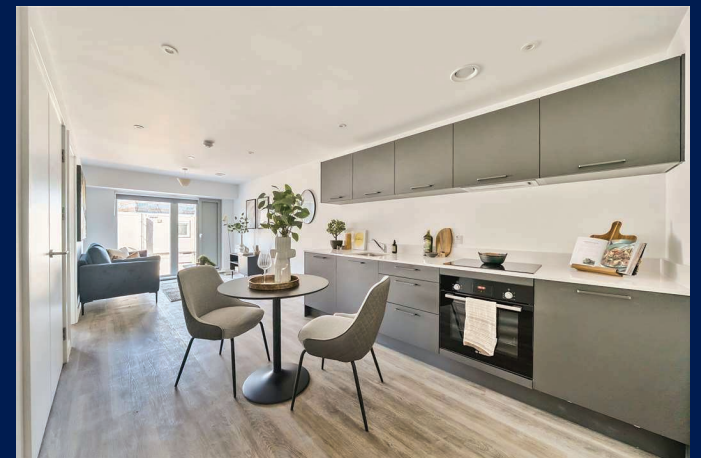


Floor plan produced in accordance with RICS Property Measurement 2nd Edition, Incorporating International Property Measurement Standards (IPMS2 Residential). © n:checom 2025. Produced for Hamptons. REF: 1270494

For Clarification

We wish to inform prospective tenants that we have prepared these particulars as a general guide and they have been confirmed as accurate by the landlord. We have not verified permissions, nor carried out a survey, tested the services, appliances and specific fittings. Room sizes are approximate and measurement figures rounded: they are taken between internal wall surfaces and therefore include cupboards/shelves, etc. Accordingly, they should not be relied upon for

carpets and furnishings. It should also be noted that all fixtures and fittings, carpeted, curtains/blinds, kitchen equipment and garden statuary, whether fitted or not, are deemed removable by the landlord unless specifically itemised with these particulars. Please enquire in office or on our website for details on holding deposit and tenancy deposit figures.



ESTABLISHED 1969
h
THE HOME EXPERTS