



Lucien Road, SW17

£725,000

An impeccable example of a two double bedroom apartment positioned on prime road in Tooting Bec with an immaculate interior comprising an open-plan kitchen/reception room with doors opening onto a landscaped south facing garden, two double bedrooms, two bathrooms and a utility room.

Lucien Road is one of the most desirable roads in Tooting Bec with excellent proximity to the many shops, bars and restaurants Tooting and Balham town centres have to offer. The vast transport links of Tooting Bec Underground Station and green open spaces of Tooting Bec Common are also within walking distance.

Features

- Underfloor Heating
- Two Double Bedrooms
- Two Bathrooms
- South Facing Garden
- Chain Free
- Stylish Interior



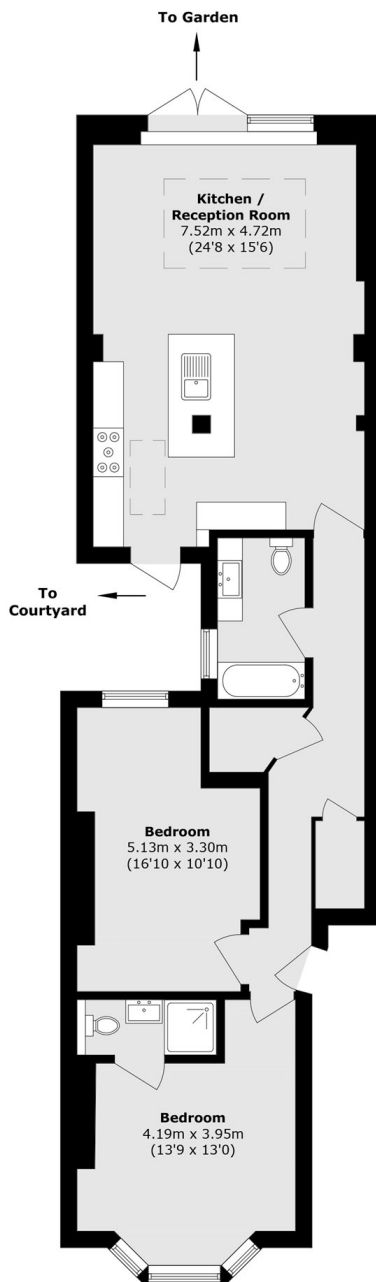
Lucien Road, SW17

Having undergone a back to brick restoration, the property retains a stunning open-plan kitchen/ reception room with a stylish fitted kitchen furnished with wall and base units, integral appliances, solid worktops and a breakfast island with ample space for dining and seating with Crittal style doors opening onto a south facing landscaped garden.

The property is further balanced with two spacious double bedrooms and a three piece family bathroom and utility room. The principal bedroom is also furnished with a three piece en-suite.



Lucien Road, London, SW17



Total area (approx.): 89.0 sq. m (957.9 sq. ft)

Dexters

Tooting
48 Tooting High Street
London
SW17 0RG
Sales
020 8545 8582

Energy Rating: C. We aim to make our particulars both accurate and reliable. However they are not guaranteed; nor do they form part of an offer or contract. If you require clarification on any points then please contact us, especially if you're traveling some distance to view. Please note that appliances and heating systems have not been tested and therefore no warranties can be given as to their good working order.

 **RICS** | Regulated
Estate Agent
and Letting Agent

[dexters.co.uk](https://www.dexters.co.uk)