



Smallwood Road, SW17

£650,000

A charming and lovingly maintained freehold home extending to three bedrooms and a generous garden plot with further scope for alterations and extension potential (STPP).

Smallwood Road represents a very close knit community of homes nestled moments away from central Tooting with the desirable shops, bars and restaurants and convenient transports links of Tooting Broadway Underground station a short walk away. The vast green open spaces of Wimbledon Common and Tooting Bec common are also nearby.

Features

- Three Bedrooms
- Large Garden
- Potential to Extend (STPP)
- Desirable Location
- Freehold Home
- Two Bathrooms



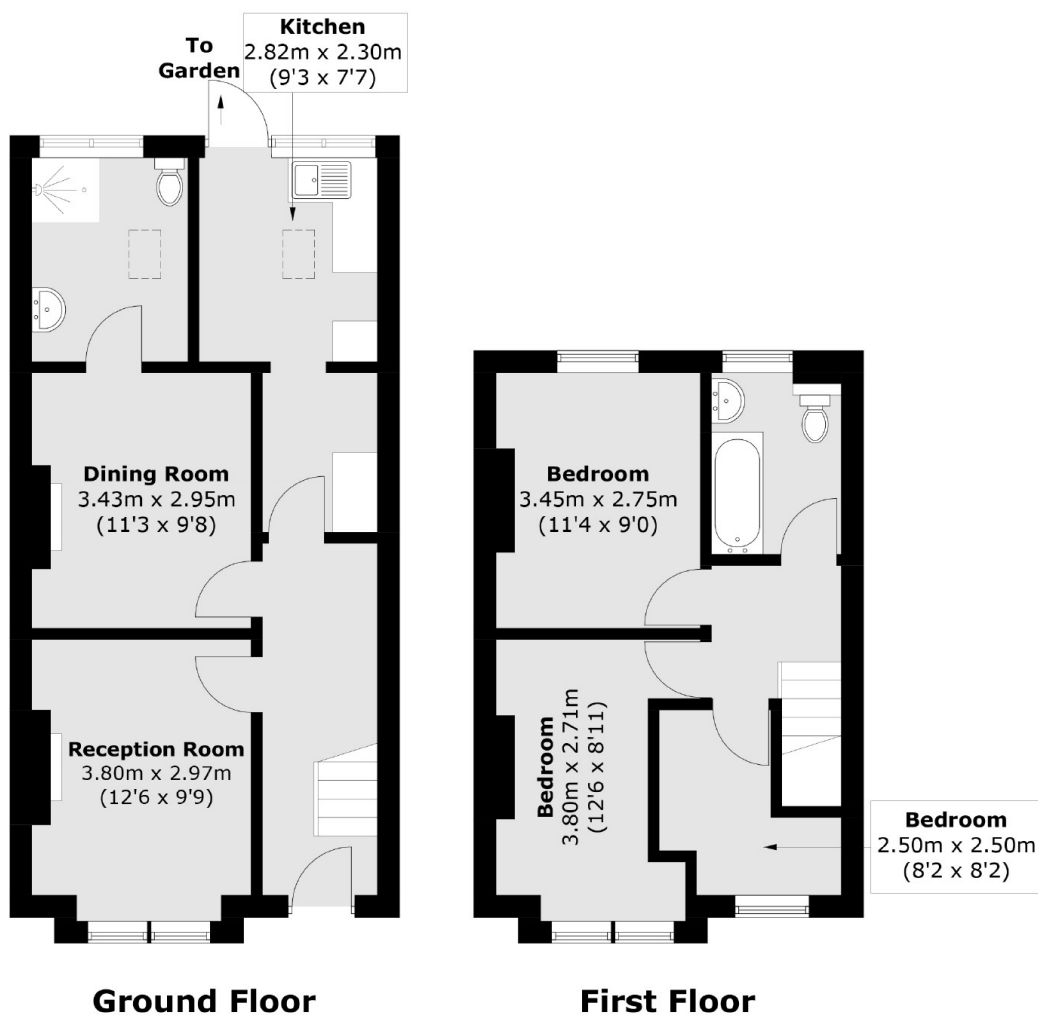
Smallwood Road, SW17

With a handsome and imposing exterior, the property retains a front reception room with a second reception room/dining area with direct access onto a downstairs bathroom. With a partial rear extension the property also offers a sizeable eat-in kitchen with a breakfast area and doors leading onto a superb and larger than average garden with further scope for extension (STPP).

Over the first floor, there are three bedrooms and a family bathroom with an abundance of scope via the loft.



Smallwood Road, London, SW17



Total area (approx.): 80.7 sq. m (868.2 sq. ft)