



Bruce Road, CR4

£1,650 Per calendar month

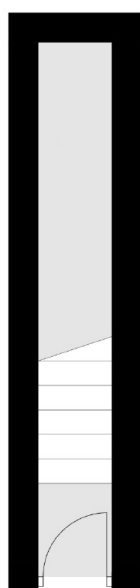
A spacious one bedroom flat located a short distance from Tooting Railway. This apartment has ample storage throughout and benefits from a separate reception and modern kitchen.

Bruce Road is a quiet residential street with easy access to Tooting Overground (Thameslink) providing quick train routes in to central London, the Northern Line Tube is also located close by in Tooting Broadway. The property has an excellent array of local shopping amenities nearby, including the popular Tooting Market. Figge's Marsh is located at the end of Bruce road offering a large open green space.

Features

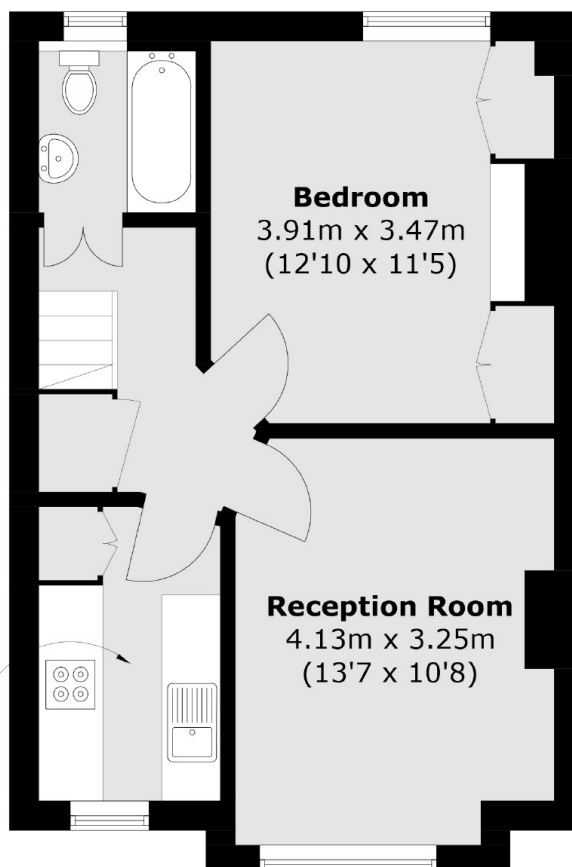
- Maisonette
- First Floor Flat
- One Bedroom
- Built-in Storage
- Separate Reception
- Modern Kitchen

Bruce Road, Mitcham, CR4



Ground Floor

Kitchen
3.04m x 1.86m
(10'0 x 6'1)



First Floor

Total area (approx.): 45.9 sq. m (494 sq. ft)