



Tooting High Street, SW17

£2,000 Per calendar month

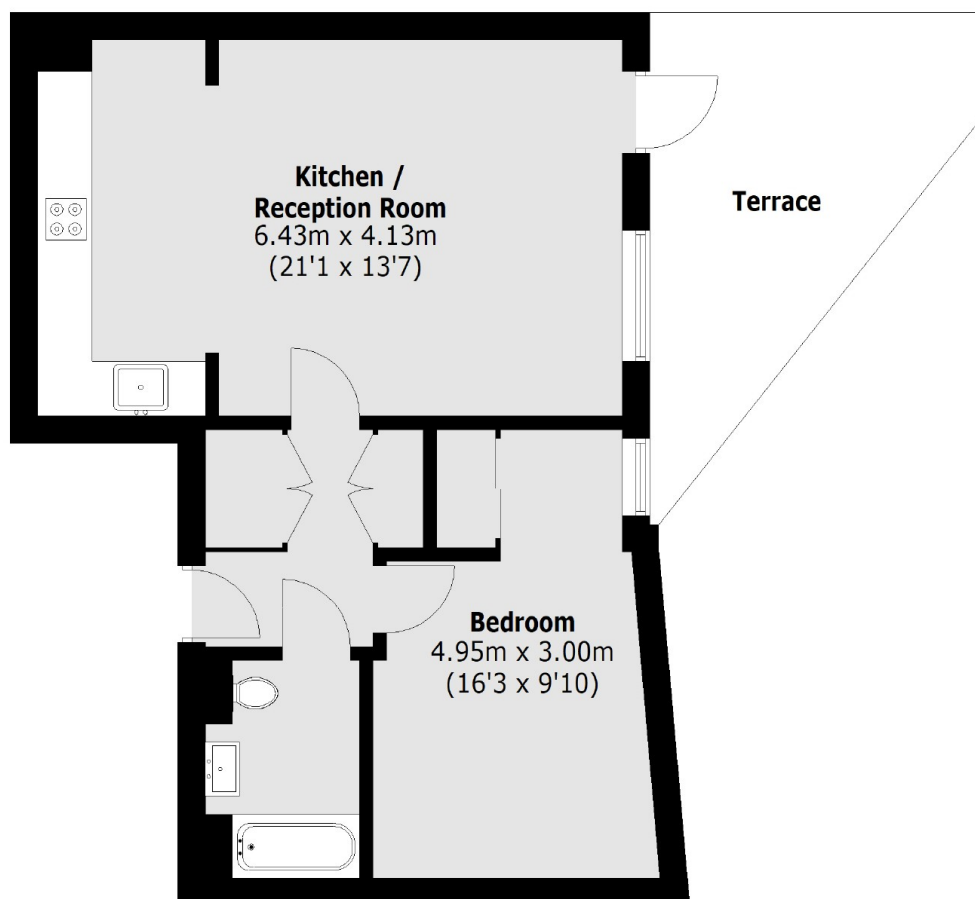
An immaculate one bedroom apartment finished to a high specification. This property benefits from a spacious open plan kitchen/reception and direct access to a private terrace.

Tooting High Street sits at the heart of Tooting Broadway with it's thriving shops, bars and restaurants as well as Tooting Market on the doorstep. The convenient transport links of Tooting Broadway Underground station are within walking distance.

Features

- New Development
- One Bedroom
- Contemporary
- Lift Access
- Private Terrace
- Communal Garden Access

Tooting High Street, London, SW17



Total area (approx.): 51.4 sq. m (553.2 sq. ft)
Terrace area: 12.8 sq. m (137.7 sq. ft)