



## Graham Road, CR4

### £625,000

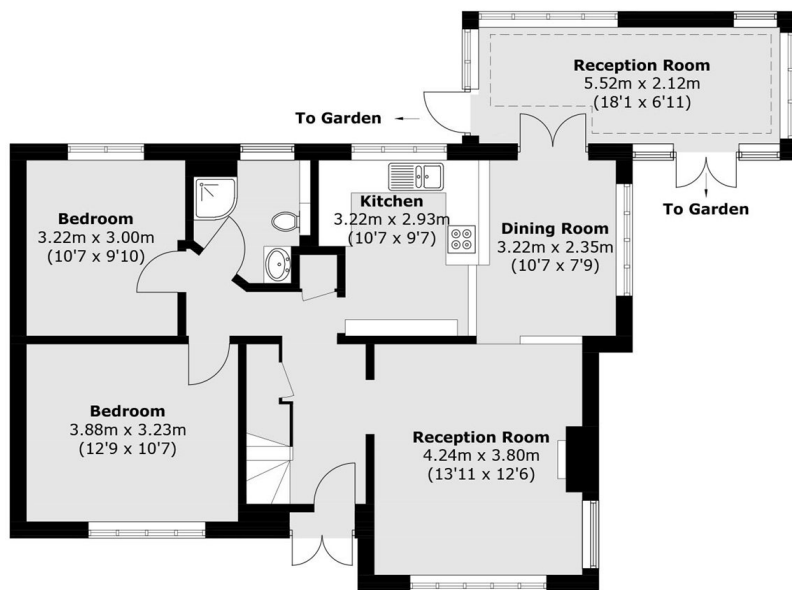
A rare opportunity to acquire a detached bungalow with a generous plot comprised of off-street parking and large garden with internal accommodation furnished with three bedrooms, an open-plan kitchen/dining room, a generous lounge and a conservatory.

Graham Road is a quiet residential street conveniently located for the green open spaces of Figges Marsh with the vast array of shops, bars and restaurants of Mitcham & Tooting town centres nearby. The transport links of Mitcham Eastfields and Tooting Railway stations are also a short stroll away.

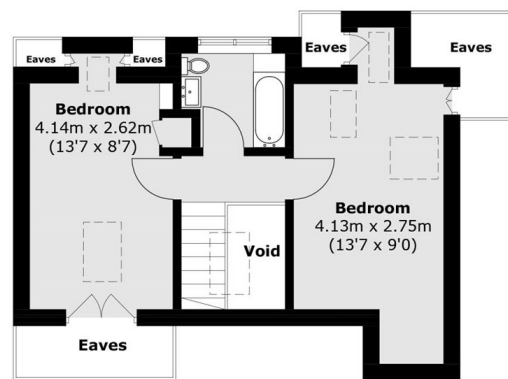
### Features

- Freehold Detached Bungalow
- Potential to Extend (STPP)
- Off-Street Parking
- Large Garden
- Front Reception Room
- Kitchen/Dining Room

# Graham Road, Mitcham, CR4



**Ground Floor**



**First Floor**

Total area (approx.): 118.8 sq. m (1278.7 sq. ft)  
(Excluding Eaves / Void)