



Trevelyan Road, SW17

£2,400 Per calendar month

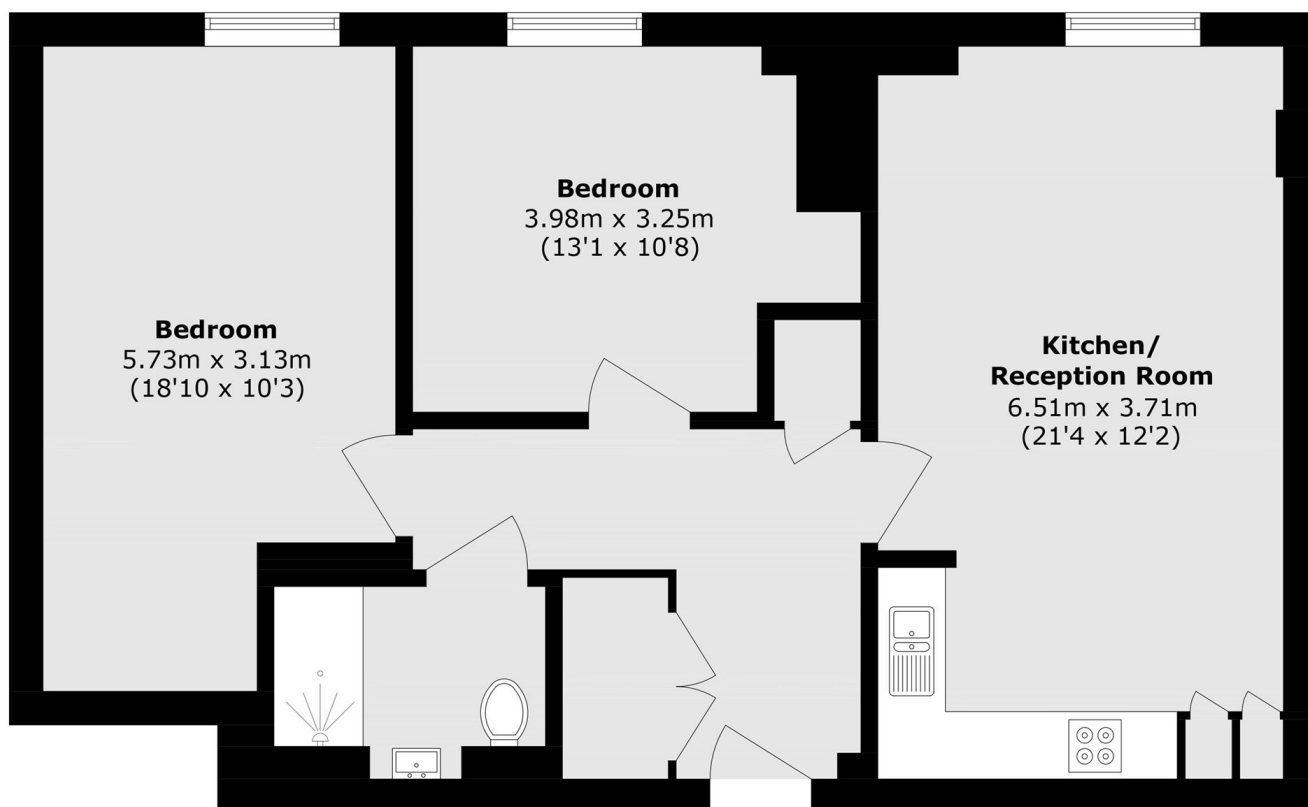
A charming and beautifully presented two double bedroom apartment, moments away from central Tooting with a superb open plan kitchen/reception, making it perfect for professional sharers or a couple.

Trevelyan Road sits at the heart of Tooting Broadway with it's thriving shops, bars and restaurants as well as Tooting Market on the doorstep. The convenient transport links of Tooting Broadway underground station are within walking distance.

Features

- New Build
- Two Double Bedrooms
- Open Plan Kitchen Living Area
- Ample Storage
- Off Street Parking
- Communal Roof Terrace

Trevelyan Road, London, SW17



Total area (approx.): 70.2 sq. m (755.6 sq. ft)