



## Upper Tooting Road, SW17

### £450,000

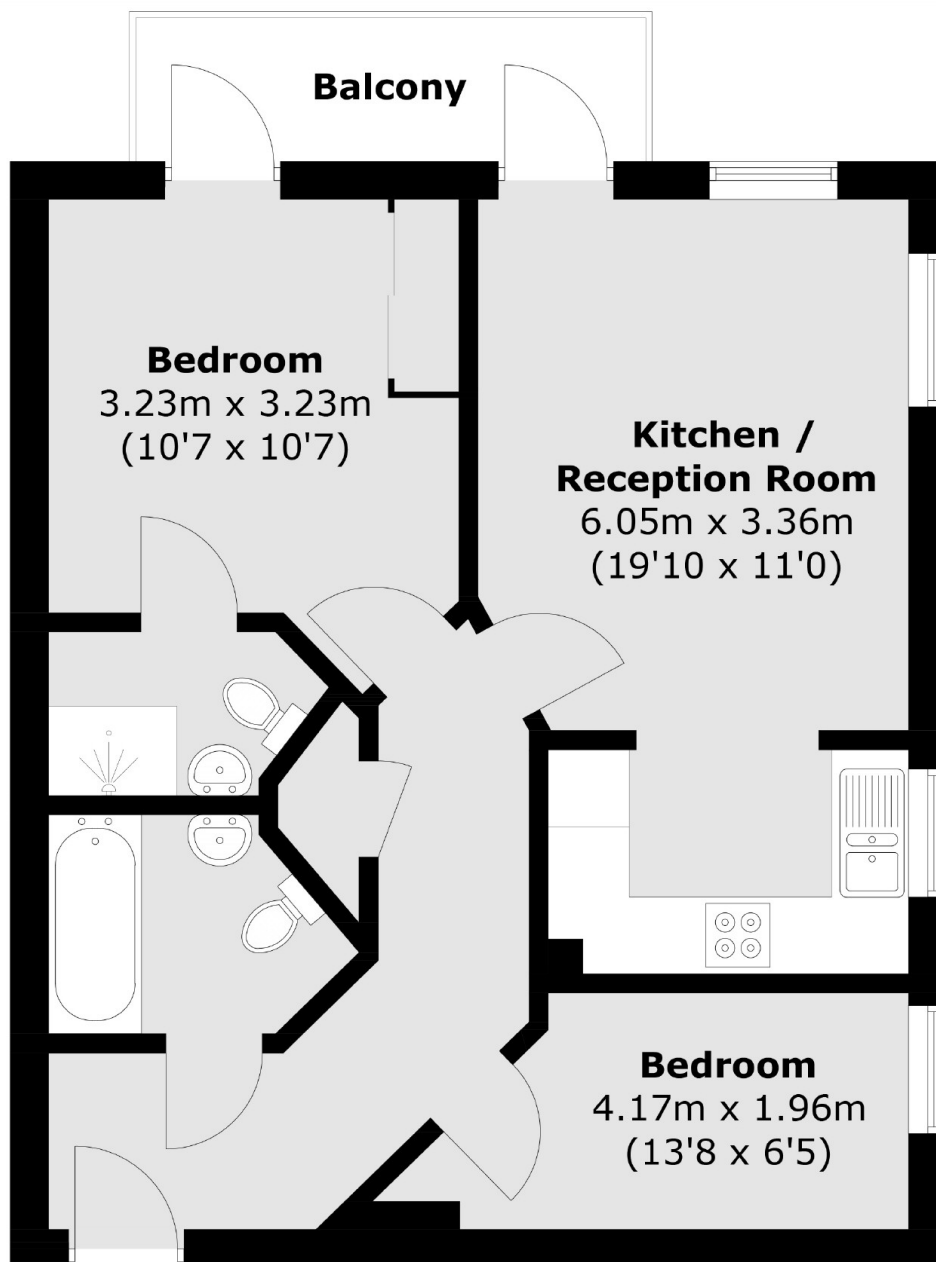
A beautifully presented and stylish two double bedroom apartment positioned in the heart of Tooting furnished with a spacious open-plan dining room/reception room, stylish fitted kitchen, two spacious double bedrooms, a family bathroom and an en-suite off the principle bedroom. This second floor apartment is located to the rear of the building and includes a private balcony and allocated parking space.

Whitham Court is at the heart of Tooting with a superb selection of bars, restaurants and eateries on the doorstep. The property is equidistant to both Tooting Bec and Tooting Broadway Underground stations, with the vast green open spaces of Tooting Bec Common also within walking distance

### Features

- Two Double Bedrooms
- Two Bathrooms
- Stylish Apartment
- Open-Plan Kitchen/Reception Room
- Private Balcony
- Allocated Parking Space

# Upper Tooting Road, London, SW17



Total area (approx.): 54.4 sq. m (585.5 sq. ft)  
Balcony: 4.4 sq. m (47.3 sq. ft)

## Dexters

Tooting  
48 Tooting High Street  
London  
SW17 0RG  
Sales  
020 8545 8582

Energy Rating: . We aim to make our particulars both accurate and reliable. However they are not guaranteed; nor do they form part of an offer or contract. If you require clarification on any points then please contact us, especially if you're traveling some distance to view. Please note that appliances and heating systems have not been tested and therefore no warranties can be given as to their good working order.

 **RICS** | Regulated  
Estate Agent  
and Letting Agent

dexters.co.uk