



Ashbourne Road, CR4

£875,000

Dexters



Ashbourne Road, CR4

A newly refurbished mid terrace home that has undergone a back to brick restoration split over three floors with a stunning interior comprising a stunning fitted kitchen with ample space for dining, a large garden, four double bedrooms, three bathrooms and a front reception room.

With an inviting exterior, the property opens onto a generous front reception room with a large round bay window and ample space for seating. To the rear, there is a wonderfully positioned fitted kitchen with wall and base units, a freestanding SMEG cooker, a breakfast island and bifolding doors that open onto a large garden. The ground floor is further balanced with a three piece shower room and a separate utility area.

Over the first and top floors, there are four generous double bedrooms with two bathrooms with the principal bedroom positioned on the top floor and furnished with a three piece en-suite.

Situated on a quiet residential street conveniently located within easy reach of both Tooting station & Tooting Broadway underground, Ashbourne Road is close to the green open spaces of Figges Marsh and the vast array of shops, bars and restaurants of Tooting nearby - including the popular Tooting Market.

Features

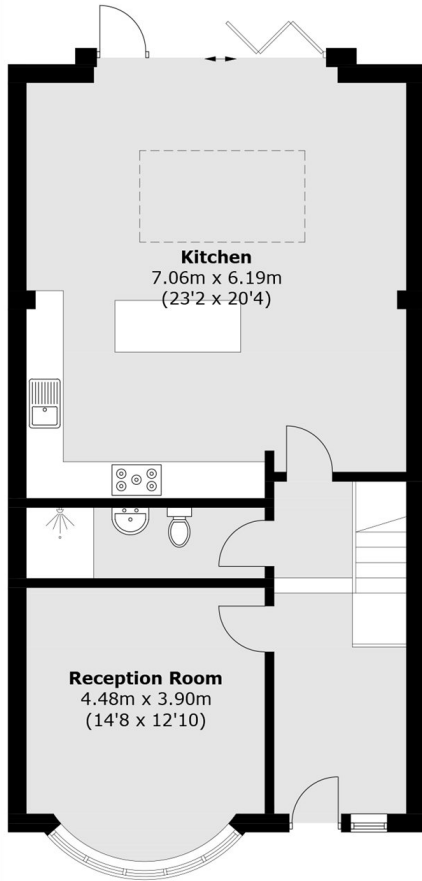
- Four Bedrooms
- Fully Renovated
- Stylish Interior
- Large Garden
- Three Bathrooms
- SMEG Appliances



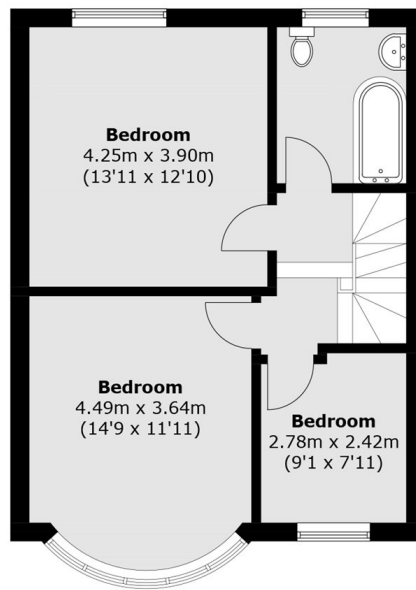




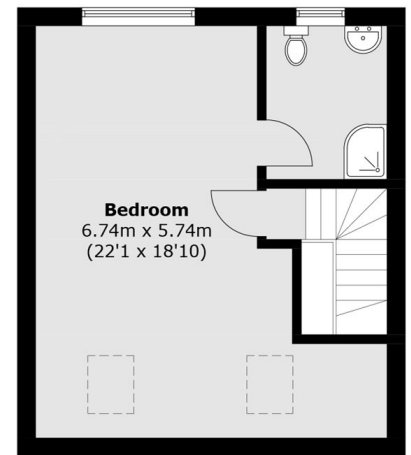
Ashbourne Road, Mitcham, CR4



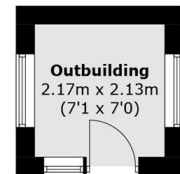
Ground Floor



First Floor



Second Floor



**(Not Shown In Actual
Location / Orientation)**

Total area (approx.): 168.0 sq. m (1,808.4 sq. ft)
Outbuilding area : 4.7 sq. m (50.6 sq. ft)