



Trinity Road, SW17

£635,000

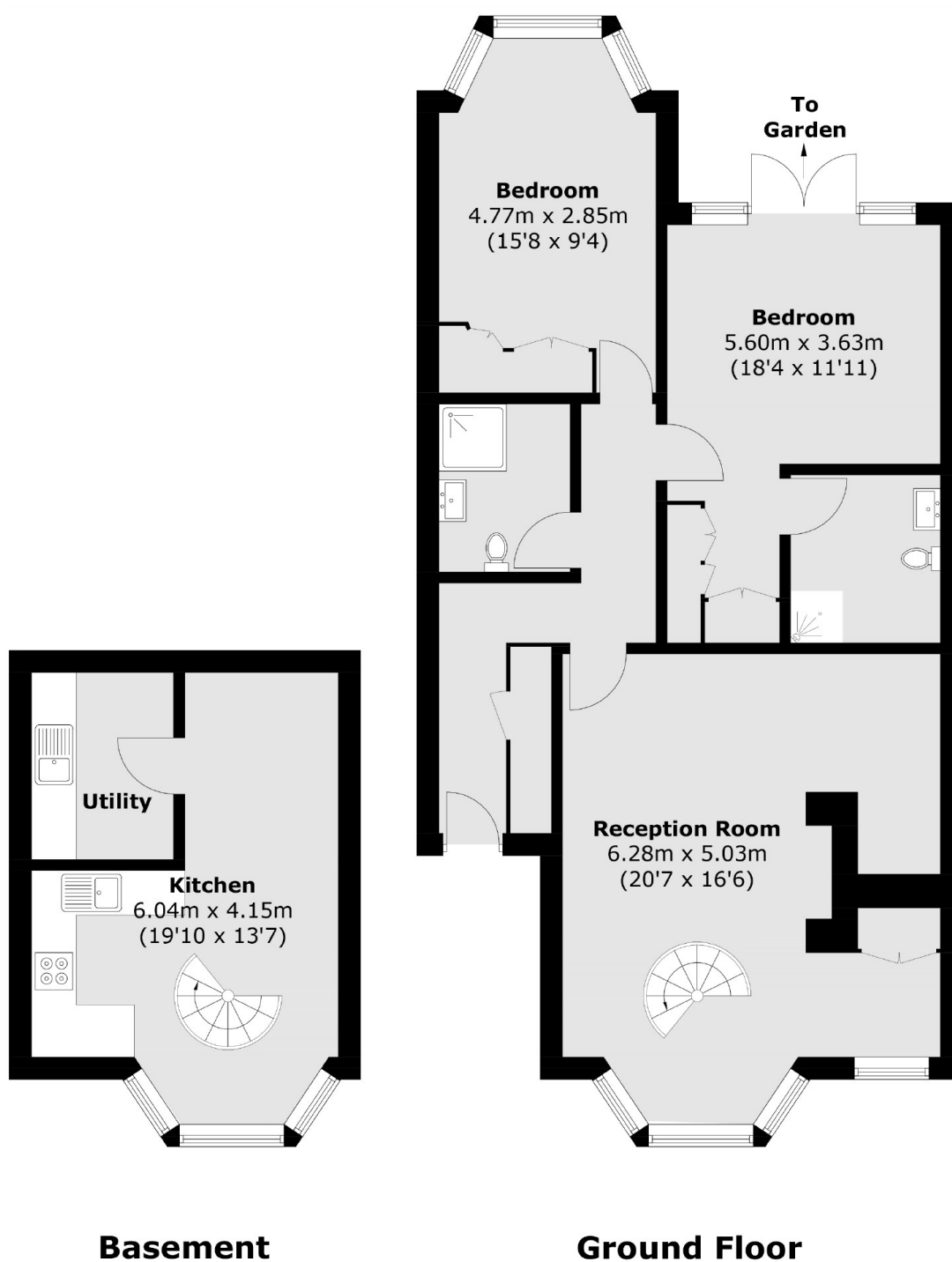
A charming and larger than average split level two double bedroom apartment set over the ground and lower ground floor of this handsome Victorian building with a footprint that spans over 1000 sqft, positioned moments away from Wandsworth Common and Balham town centre. Accommodation comprises a large reception room with stairs leading to an eat-in kitchen with a utility room, two double bedrooms and two bathrooms with direct access onto a private rear garden.

Trinity Road is eviably positioned moments away from Tooting Bec Underground station and the vast green open spaces of Wandsworth Common. The many shops, bars and restaurants of Bellevue Road and Balham and Tooting town centres are also nearby.

Features

- Two Bedrooms
- Split Level
- Two Bathrooms
- Private Garden
- Share of Freehold
- Chain Free

Trinity Road, London, SW17



Total area (approx.): 101.1 sq. m (1,088.2 sq. ft)

Dexters

Tooting
48 Tooting High Street
London
SW17 0RG
Sales
020 8545 8582

Energy Rating: C. We aim to make our particulars both accurate and reliable. However they are not guaranteed; nor do they form part of an offer or contract. If you require clarification on any points then please contact us, especially if you're traveling some distance to view. Please note that appliances and heating systems have not been tested and therefore no warranties can be given as to their good working order.

 **RICS** | Regulated
Estate Agent
and Letting Agent

[dexters.co.uk](https://www.dexters.co.uk)