



Ashbourne Road, CR4

£2,500 Per calendar month

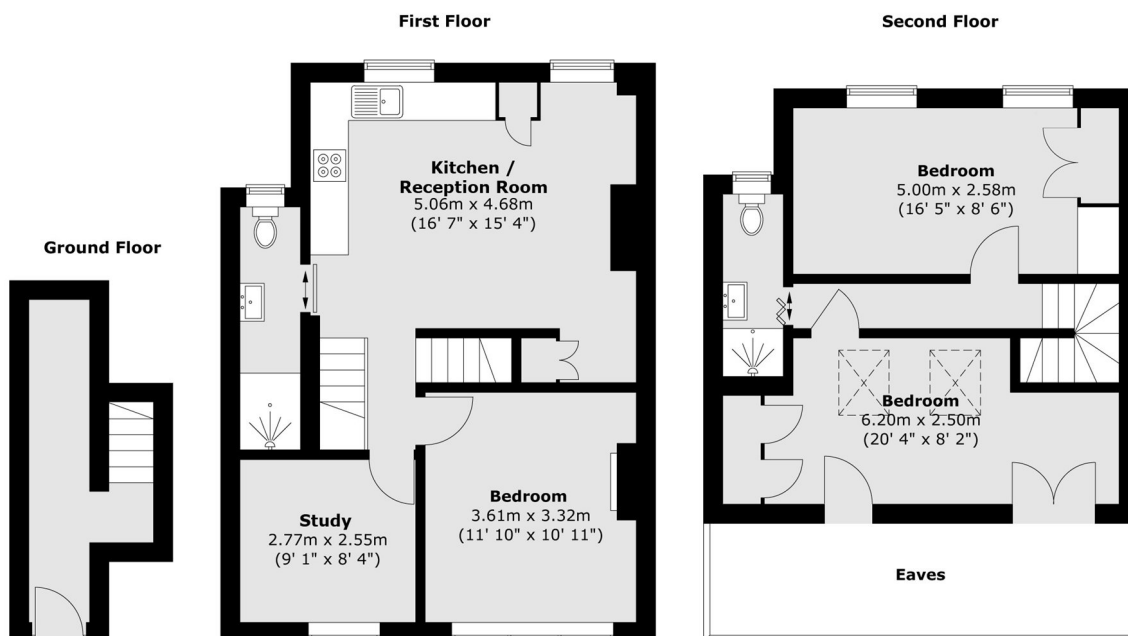
A stunning upper maisonette positioned over the first and top floor of this Victorian building with a footprint that spans to 1041 sqft. With an immaculate interior, the property benefits from a superb open-plan kitchen/reception room, three bedrooms and two bathrooms.

Situated on a quiet residential street conveniently located within easy reach of both Tooting station & Tooting Broadway underground, close to the green open spaces of Figges Marsh and the vast array of shops, bars and restaurants of Tooting nearby - including the popular Tooting Market.

Features

- Three Double Bedrooms
- Two Bathrooms
- Own Front Door
- Open Plan Kitchen Living Area
- Split Level
- Desirable Location

Ashbourne Road, Mitcham, CR4



Total area (approx.) : 94.2 sq. m (1014 sq. ft)
(excluding eaves)