



Eswyn Road, SW17
£1,000,000

Dexters



Eswyn Road, SW17

A charming fully extended family home that has been wonderfully maintained over the years with four double bedrooms, a large eat-in kitchen, front reception and spacious rear garden.

Retaining a handsome and inviting exterior, the property opens onto a generous front reception room furnished with ample space for seating with a feature fireplace and a downstairs w/c. To the rear of the home there is a stylish open plan kitchen diner, with integrated appliances, solid worktops with bifolding doors opening onto a landscaped rear garden.

Over the first and top floors, there are four double bedrooms and two bathrooms with the principal bedroom furnished with fitted wardrobes. The property is sold chain free.

Eswyn Road is perfectly placed for the many shops, bars and restaurants of Upper Tooting Road and open green spaces of Tooting Common. It is enviably located for the widespread bus and underground transport links of Tooting Bec & Tooting Broadway Stations.

Features

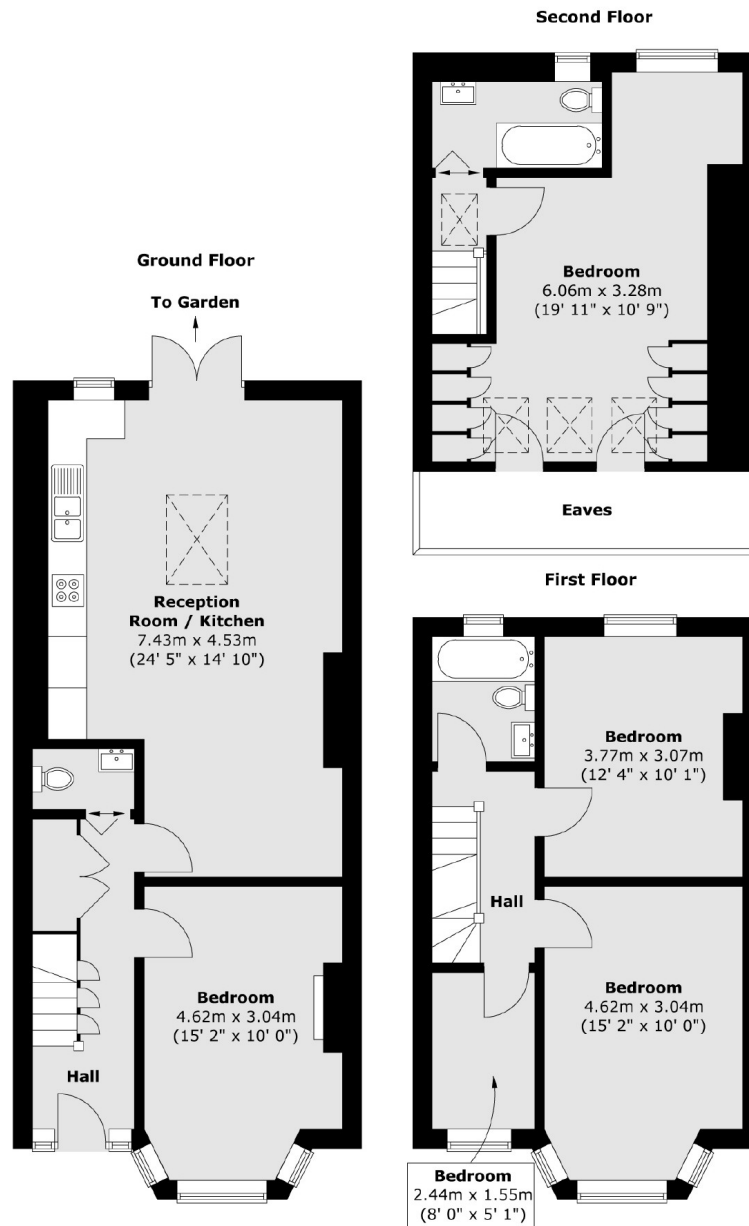
- Four Double Bedrooms
- Blank Canvas
- Desirable Location
- Chain Free
- Period Features
- Front Reception







Eswyn Road, London, SW17



Total area (approx.) : 121.6 sq. m (1309 sq. ft)

Dexters

Tooting
48 Tooting High Street
London
SW17 0RG
Sales
020 8545 8582

Energy Rating: D. We aim to make our particulars both accurate and reliable. However they are not guaranteed; nor do they form part of an offer or contract. If you require clarification on any points then please contact us, especially if you're traveling some distance to view. Please note that appliances and heating systems have not been tested and therefore no warranties can be given as to their good working order.

 **RICS** | Regulated
Estate Agent
and Letting Agent

[dexters.co.uk](https://www.dexters.co.uk)