



## Wandle Road, SW17

£1,850 Per calendar month

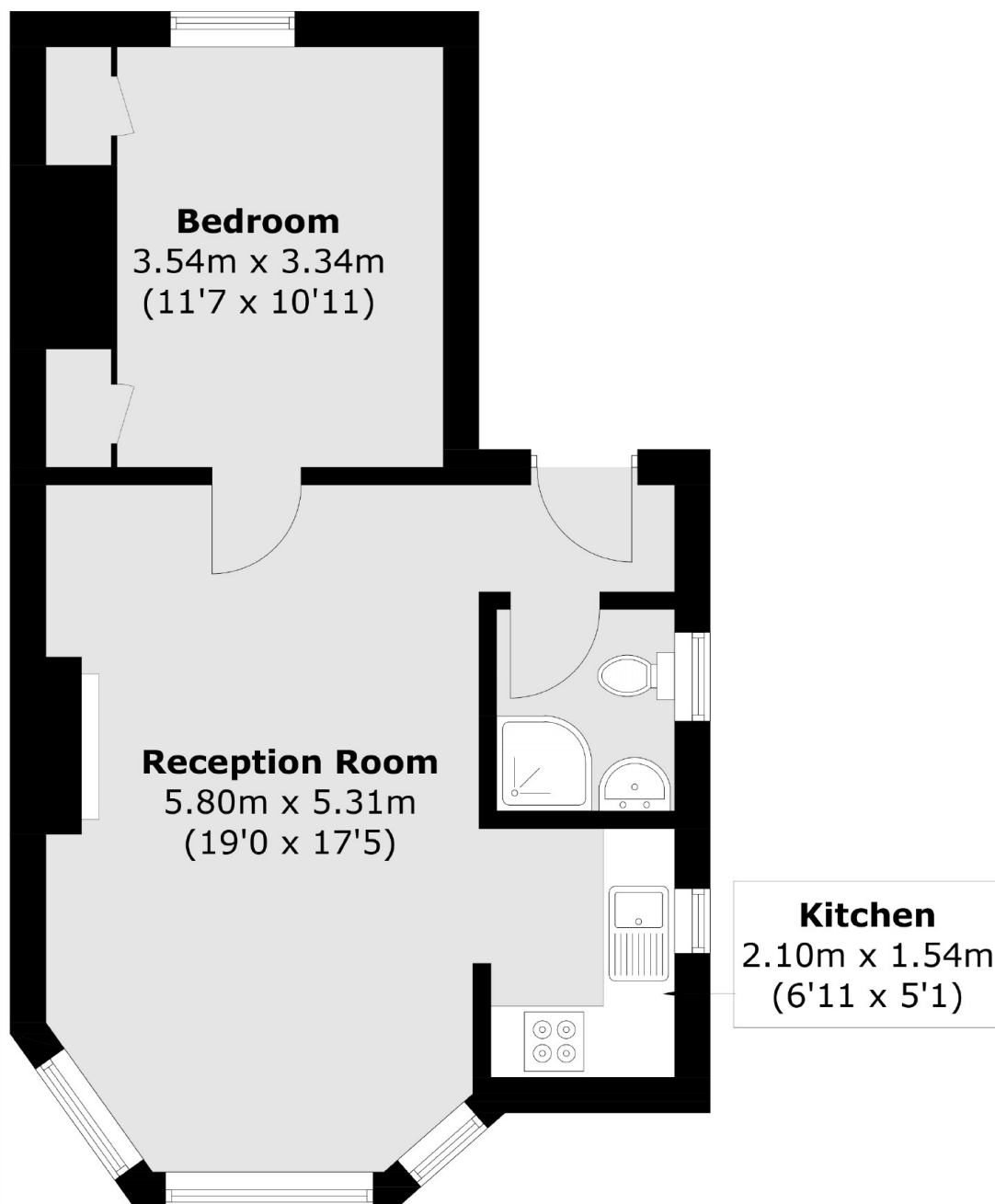
A newly redecorated flat located on a popular residential road in Tooting. This property offers a spacious bedroom and an open plan kitchen/reception room with high ceilings. This property also benefits from a communal garden.

Wandle Road is a beautiful tree-lined residential street positioned moments away from Tooting Bec Underground station and the vast green open spaces of Wandsworth Common. The many shops, bars and restaurants of Bellevue Road and Balham and Tooting town centres are also nearby.

### Features

- Period Conversion
- One Double Bedroom
- Open Plan Kitchen Living
- Recently Redecorated
- Communal Gardens
- Prime Location

# Wandle Road, London, SW17



Total area (approx.): 41.1 sq. m (442.4 sq. ft)