

Grenfell Road, CR4

£400,000

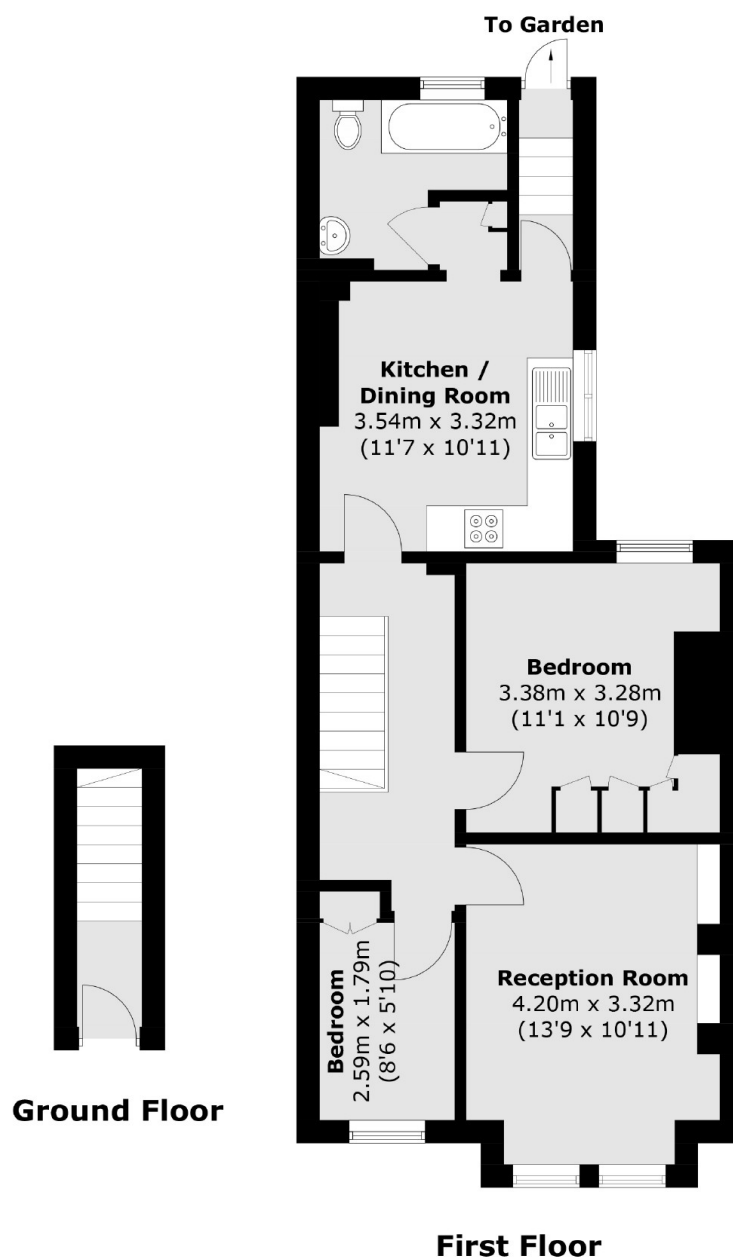
OFFERS IN EXCESS OF An impressive upper maisonette comprising a generous front reception room, two double bedrooms, a large eat-in kitchen and a three piece family bathroom with ample space for further alterations and extending (subject to planning permission and necessary consents).

Grenfell Road is a quiet residential street within close proximity to an array of bars, restaurants and shops of Tooting High Street. Tooting (Overground) and Tooting Broadway Stations provides frequent transport connections and the open spaces of Figges Marsh are also nearby.

Features

- Two Bedrooms
- Own Front Door
- Private Garden
- Potential to Extend (STPP)
- Desirable Location
- Large Kitchen

Grenfell Road, Mitcham, CR4



Total area (approx.): 62.8 sq. m (676.0 sq. ft)

Dexters

Tooting
48 Tooting High Street
London
SW17 0RG
Sales
020 8545 8582

Energy Rating: D. We aim to make our particulars both accurate and reliable. However they are not guaranteed; nor do they form part of an offer or contract. If you require clarification on any points then please contact us, especially if you're traveling some distance to view. Please note that appliances and heating systems have not been tested and therefore no warranties can be given as to their good working order.

 **RICS** | Regulated
Estate Agent
and Letting Agent

dexters.co.uk