



Graham Avenue, CR4

£2,700 Per calendar month

A spacious three double bedroom flat. The property has been neutrally decorated throughout and benefits from a large separate living room, utility room and additional WC making it perfect for professional sharers.

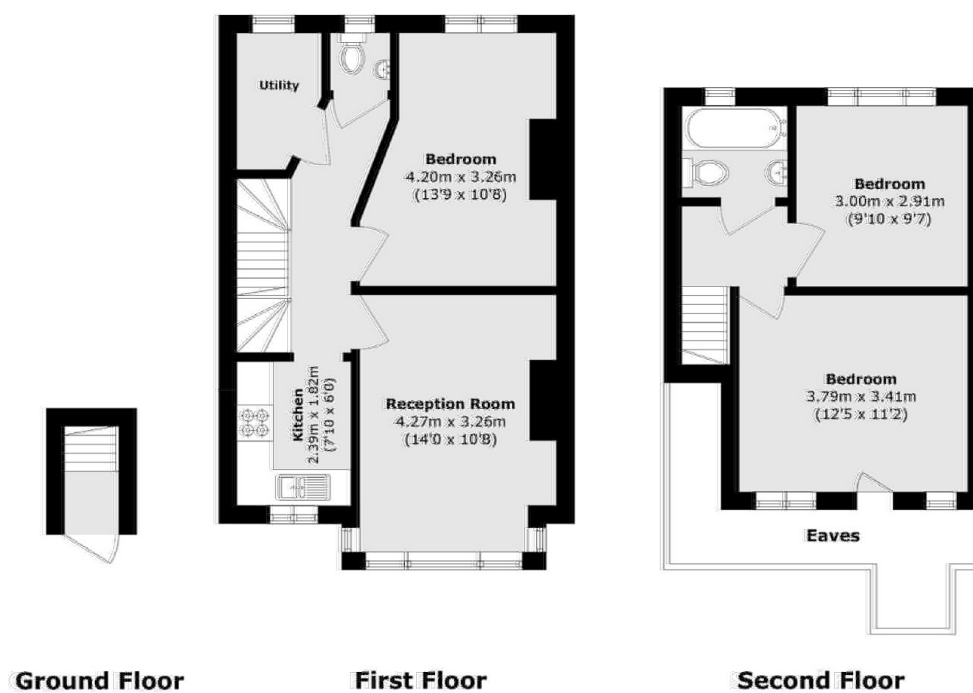
Graham Avenue is ideally located for commuting to London via Mitcham Eastfields and Tooting Railway Stations as well as Tooting Broadway underground. With an abundance of great outdoor space including Figges Marsh, Mitcham Common, Mitcham Golf Club and Mitcham Cricket Green.

Features

First Floor Flat
Split Level

Separate Living Room
Additional Utility Room
Figges Marsh

Graham Avenue, Mitcham, CR4



Total area (approx.): 73.5 sq. m (791.2 sq. ft)
(Excluding Eaves)

Dexters

Tooting
48 Tooting High Street
London
SW17 0RG
Lettings
020 8545 8583

Energy Rating: . We aim to make our particulars both accurate and reliable. However they are not guaranteed; nor do they form part of an offer or contract. If you require clarification on any points then please contact us, especially if you're traveling some distance to view. Please note that appliances and heating systems have not been tested and therefore no warranties can be given as to their good working order.

 **RICS** | Regulated
Estate Agent
and Letting Agent

[dexters.co.uk](https://www.dexters.co.uk)