



## Bruce Road, CR4

### £600,000

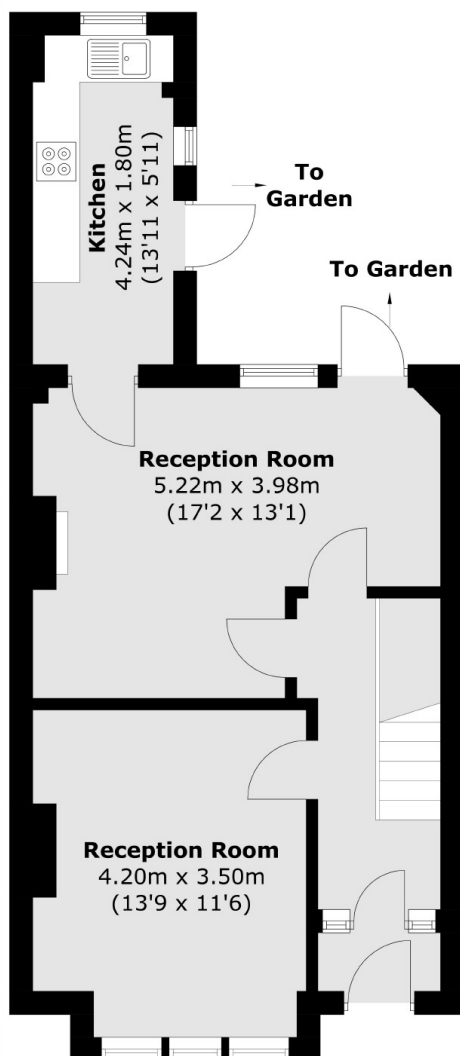
A generous three bedroom mid terrace home requiring modernisation with a large plot and scope for further alterations and extension potential (STPP). The property comprises a front reception room, a large dining room with an integral kitchen, three bedrooms, a three piece family bathroom and large garden.

Bruce Road is conveniently located for the many shops, bars and restaurants of central Tooting with both Tooting Railway and Tooting Broadway Underground stations within walking distance. The green open spaces of Figges Marsh are also nearby.

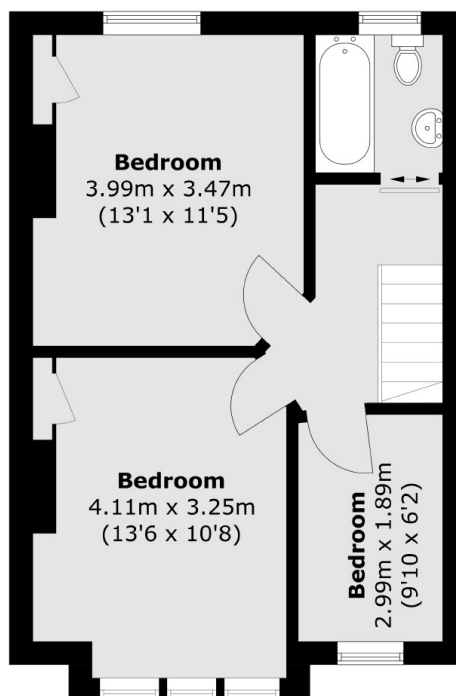
### Features

- Three Bedroom
- Freehold Home
- Chain Free
- Potential to Extend (STPP)
- Front Reception Room
- Desirable Location

# Bruce Road, Mitcham, CR4



**Ground Floor**



**First Floor**

Total area (approx.): 92.5 sq. m (995.7 sq. ft)