



## Louisville Road, SW17

### £600,000

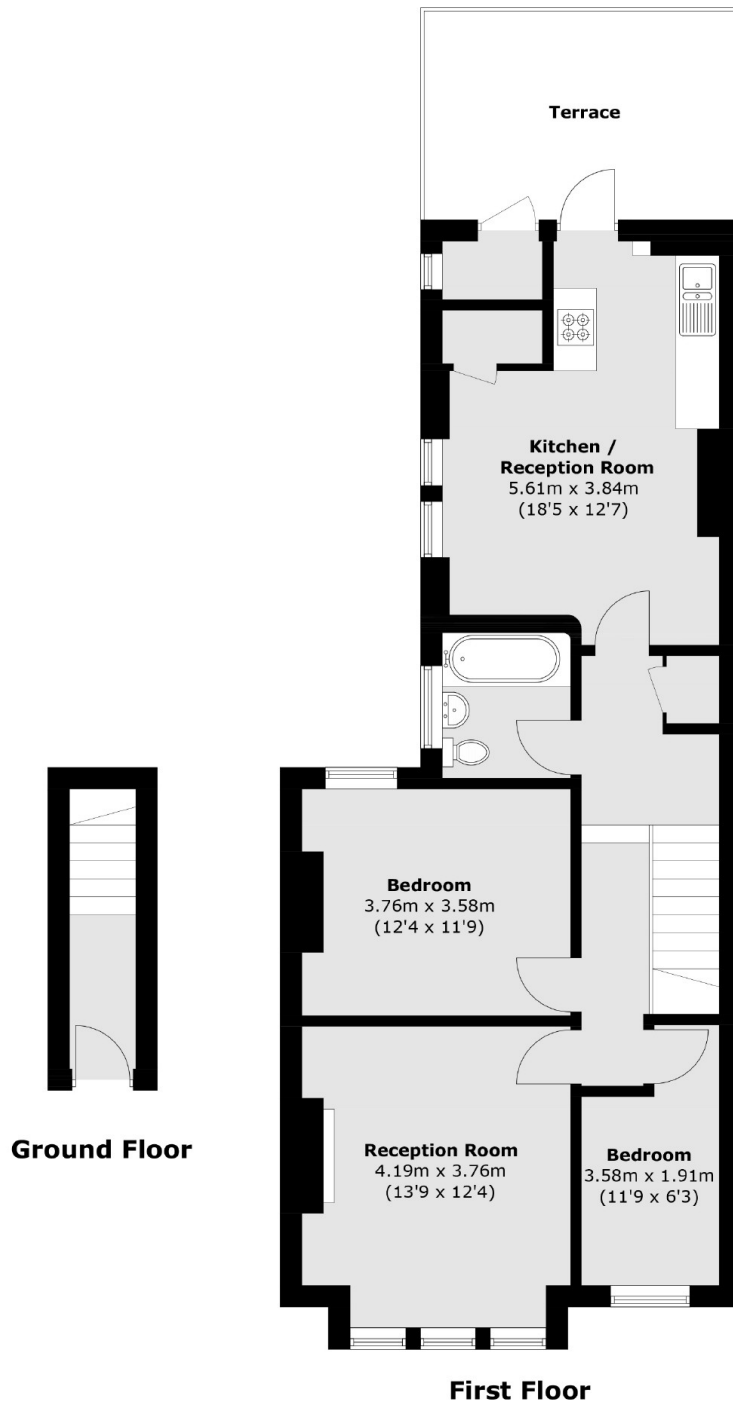
A highly desirable upper maisonette occupying a generous plot over the first floor of this handsome Edwardian building with a floorplan that spans just shy of 800 sqft benefitting from two bedrooms, a large eat-in kitchen, a front reception room and a private south facing terrace. The property also retains scope for extending via the loft (STPP & necessary consents).

Louisville Road is a quiet tree lined residential street at the heart of the Heaver Estate with the vast array of boutiques, bars and restaurants of Balham on the doorstep. Excellent transport links of Tooting Bec and Balham are also a stone throw away with the vast green open spaces of Tooting Bec Common also within walking distance.

### Features

- Two Bedrooms
- Chain Free
- Long Lease
- Private South Facing Terrace
- Desirable Location
- Potential to Extend (STPP)

# Louisville Road, London, SW17



Total area (approx.): 43.1 sq. m (786.8 sq. ft)  
External Storage: 1.2 sq. m (12.9 sq. ft)  
Terrace: 12.6 sq. m (135.6 sq. ft)

## Dexters

Tooting  
48 Tooting High Street  
London  
SW17 0RG  
Sales  
020 8545 8582

Energy Rating: E. We aim to make our particulars both accurate and reliable. However they are not guaranteed; nor do they form part of an offer or contract. If you require clarification on any points then please contact us, especially if you're traveling some distance to view. Please note that appliances and heating systems have not been tested and therefore no warranties can be given as to their good working order.

 **RICS** | Regulated  
Estate Agent  
and Letting Agent

[dexters.co.uk](https://www.dexters.co.uk)